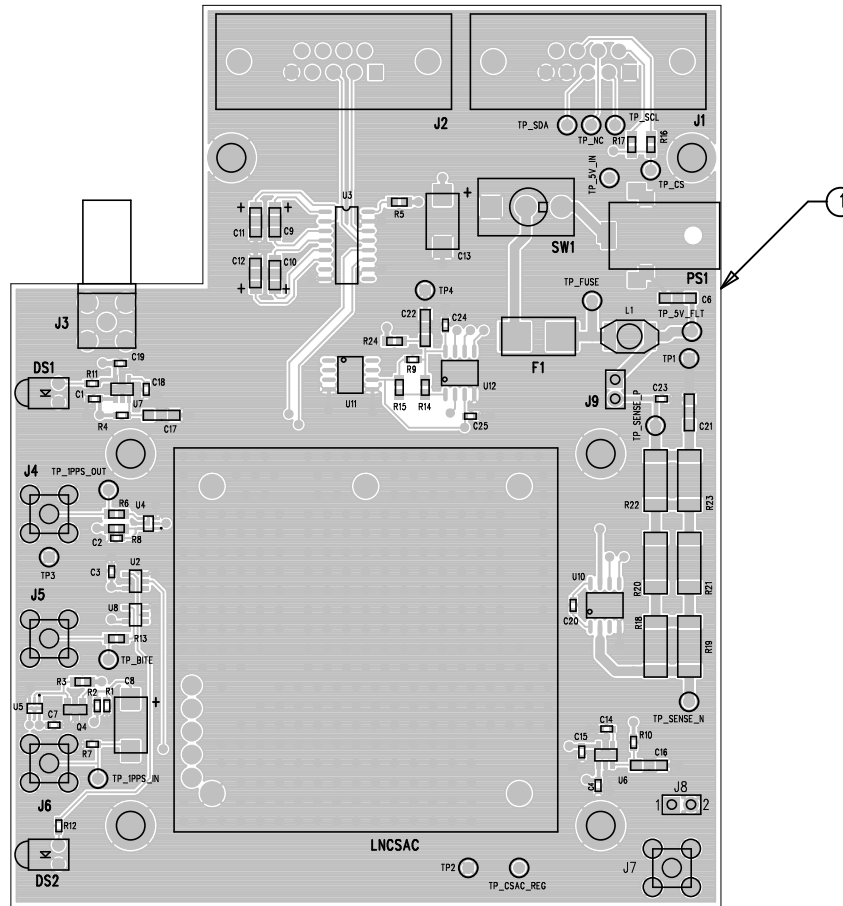


NOTES: UNLESS OTHERWISE SPECIFIED

- ASSEMBLY MUST CONFORM TO MICROSEMI PROCEDURE 899-00418-00: GLOBAL QUALITY - FLOW DOWN REQUIREMENTS PROCEDURE.
- ALL MATERIALS AND PROCESSES USED IN THE MANUFACTURING OF THIS PART WILL BE COMPLIANT WITH EU DIRECTIVE 2002/95/EC (AND ANY SUBSEQUENT AMENDMENTS) RESTRICTION OF HAZARDOUS SUBSTANCE (ROHS).
 2 OF 6 ROHS COMPLIANT.
 ROHS EXEMPTION FOR LEAD (Pb) IN SOLDER.
 USE LEAD SOLDER.
- USE "NO-CLEAN" FLUX.
- ALL LABELS MUST MEET UL94V-0 REQUIREMENTS.
- MARK ASSEMBLY REVISION IN SPACE PROVIDED PER CONTROL DRAWING.
- ATTACH CONTRACT MANUFACTURER SERIAL NUMBER LABEL APPROXIMATELY WHERE SHOWN.
 APPROXIMATELY 0.25" X 1.00" SIZE.
- MARK WITH COUNTRY OF ORIGIN (IF REQUIRED).
 IF THE "COUNTRY" MARKING IS NOT CORRECT, CREATE A LABEL WITH "MADE IN XXX" AND COVER THE INCORRECT MARKING.
 XXX = COUNTRY (FULL NAME OR ABBREVIATION).
 MAXIMUM LABEL SIZE = 0.25" X 1.00".
- LABEL PLACEMENT:
 PLACEMENT OF LABELS SHOWN ON DRAWING ARE FOR ILLUSTRATION PURPOSES ONLY. CONTRACT MANUFACTURER HAS THE FREEDOM TO PLACE LABELS WHERE NECESSARY. THIS DOES NOT APPLY TO REVISION MARKINGS.
 IT DOES APPLY TO ROHS, CONTRACT MANUFACTURER AND COUNTRY OF ORIGIN LABELS.
- ANTI-STATIC BAG AND TAG WITH PART NUMBER, REVISION LEVEL, PRODUCTION DATE, SUPPLIER NAME AND LOCATION, AND COUNTRY OF ORIGIN.
 LABEL SIZE, SPECIFIC FONT, AND FONT SIZE TO BE SUPPLIER PREFERENCE.
- PACKAGE FOR PROTECTION AGAINST DAMAGE DURING SHIPPING AND HANDLING.

REVISIONS				
REV	DESCRIPTION	CHANGE #	DATE	APPROVED
A	RELEASE TO PRODUCTION	EC09823	5/9/14	MJJ



MICROSEMI CORP.
 065-00742-000 REV A
 LAYER 1 (TOP SIDE)

THIS DOCUMENT CONTAINS INFORMATION WHICH SHALL NOT BE REPRODUCED, TRANSFERRED TO OTHER DOCUMENTS, DISCLOSED TO OTHERS USED FOR MANUFACTURING, OR ANY OTHER PURPOSE, WITHOUT THE WRITTEN AUTHORIZATION FROM MICROSEMI CORP.		THIRD ANGLE PROJECTION		REVISED BY		DATE		TITLE		PART NO.	
089-00794-000		LNC5AC		MJJ		5/9/14		PCB ASSY DWG.		689-02467-000	
APP. NO.		REV. NO.		DATE		DATE		REV. NO.		PART NO.	
MKT. APP.		LNC5AC		MJJ		5/9/14		ATE ADAPTER OR STANDALONE.		689-02467-000	
APPLICATION		LNC5AC		DWM		5/9/14		LOW NOISE CSAC (LNC5AC), 8421		689-02467-000	
DO NOT SCALE DRAWING		SCALE		NONE		SCALE		NONE		689-02467-000	