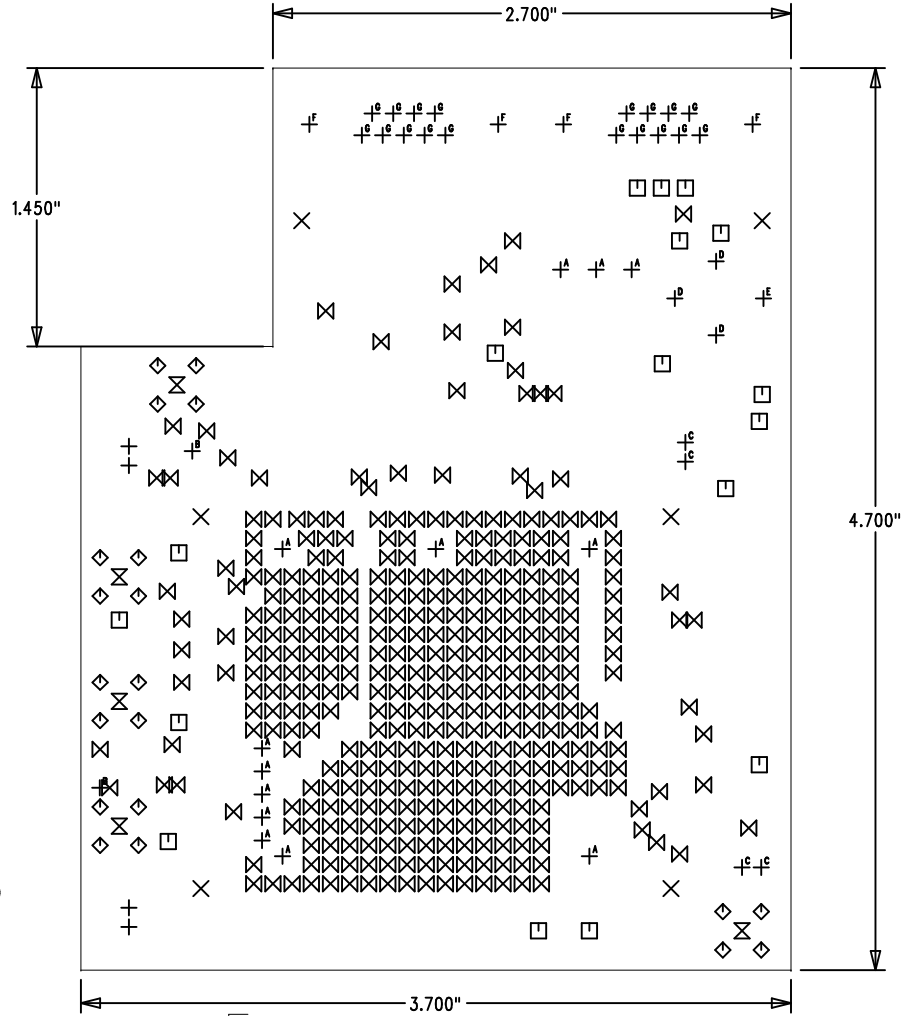


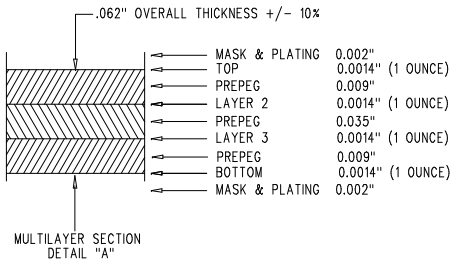
NOTES: UNLESS OTHERWISE SPECIFIED

- ASSEMBLY MUST CONFORM TO MICROSEM PROCEDURE 899-00418-00: GLOBAL QUALITY - FLOW DOWN REQUIREMENTS PROCEDURE.
- ALL MATERIALS AND PROCESSES USED IN THE MANUFACTURING OF THIS PART WILL BE COMPLIANT WITH EU DIRECTIVE 2002/95/EC (AND ANY SUBSEQUENT AMENDMENTS) RESTRICTION OF HAZARDOUS SUBSTANCE (ROHS).
- MATERIAL: ACCEPTABILITY PER IPC-A-600, LAMINATE CLASS II. USE 370 HR PER IPC-4102/24. LAMINATES MUST BE ABLE TO WITHSTAND A 5X REFLOW PROCESS WITH PEAK REFLOW TEMPERATURE OF 260 DEGREES CELSIUS. UL RATING 94V-0 MINIMUM. VENDOR TO ADD MARKING "84V-0" ON BOTTOM SILK LAYER ADJACENT TO VENDOR INFORMATION.
- FABRICATE PER IPC-6012 AND IPC-A-600, CLASS 2 SPECIFICATIONS.
- COMPARE ARTWORK TO IPC358 NETLIST PRIOR TO FABRICATION.
- ARTWORK MASTERS AND REVISIONS ARE LISTED IN FILM SET CHART.
- VENDOR SHALL NOT ADD ANY THEIVING (COPPER BALANCING) TO BOARD.
- TEARDROP PADS MAY BE ADDED AT 0.025" AND 0.035" PHS LOCATIONS.
- REMOVAL OF NON-FUNCTIONAL PADS FROM THE INNER LAYERS IS ACCEPTABLE.
- STACKUP: THIS IS A 4 LAYER BOARD. CONSTRUCTION TO BE PER DETAIL "A".
- THE OUTLINE DIMENSIONS, TOOLING HOLES, AND MOUNTING HOLES ARE SPECIFIED ON THIS DRAWING.
- DRILL: HOLECHART REFLECTS FINISHED HOLE SIZE. TOLERANCE OF +/- .003" UNLESS OTHERWISE SPECIFIED.
- REGISTRATION: ALL HOLES TO BE LOCATED WITHIN .003" OF TRUE POSITION.
- PLATING TO BE 0.001" MINIMUM ON HOLE WALL.
- FINISH: (WHERE APPLICABLE) IMMERSION GOLD PLATE 0.00002" TO 0.00006" THICK OVER 0.00010" MIN THICK ELECTROLESS NICKEL OVER BARE COPPER.
- SOLDER MASK OVER BARE COPPER: (SMD) NO SOLDER MASK ALLOWED ON PADS OR OVER CONTACT FINGERS. ALL VIAS WITHOUT SOLDER MASK CLEARANCE SHOULD BE PLUGGED. SOLDER MASK MUST BE A PERMANENT COATING TYPE IN CONFORMANCE WITH IPC-SM-840, CLASS 1 SPECIFICATION. COLOR: GREEN. SOLDER MASK MATERIAL SHALL BE THE FOLLOWING TYPES: LIQUID FILM FINISH: GLOSS, SEMI-GLOSS TYPE FINISH ALLOWED.
- SILKSCREEN: WHITE (PERMANENT NON-CONDUCTIVE INK). NO SILKSCREEN ALLOWED ON CONTACT FINGERS OR PADS.
- VENDOR MARKINGS: LOCATE IN AREAS FREE OF OTHER MARKINGS OR SILKSCREEN. NO SILKSCREEN ALLOWED ON CONTACT FINGERS OR PADS.
- CONTROLLED IMPEDANCE: TRACE ON BOTTOM LAYER (0.016" WIDE) IS IMPEDANCE CONTROLLED. CHARACTERISTIC IMPEDANCE REQUIREMENT: 50 OHMS +/- 10%. DIELECTRIC THICKNESS AND TRACE WIDTH MAY BE ADJUSTED TO ACHIEVE THIS REQUIREMENT. INCLUDE ANY CHANGES ON THE CMC, WHICH SHALL BE DELIVERED WITH EACH LOT.

REVISIONS				
REV	DESCRIPTION	CHANGE #	DATE	APPROVED
1	RELEASE TO REV 1	C01380	5/8/14	DHM
A	RELEASE TO PRODUCTION	EC09823	5/8/14	MJJ



SIZE	QTY	SYM	PLATED	TOL
20	2	†B	YES	+/-0.003
25	373	⊗	YES	+/-0.003
35	4	†	YES	+/-0.003
41	18	†E	YES	+/-0.003
43	17	□	YES	+/-0.003
45	3	†D	YES	+/-0.003
52	4	†C	YES	+/-0.003
59	5	⊗	YES	+/-0.003
67	20	◇	YES	+/-0.003
75	1	†F	NO	+/-0.003
79	13	†A	YES	+/-0.003
123	4	†F	NO	+/-0.003
144	6	⊗	YES	+/-0.003



MICROSEMI CORP.
065-00742-000 REV A
DRILL DRAWING

THIS DOCUMENT CONTAINS INFORMATION WHICH SHALL NOT BE REPRODUCED, TRANSMITTED TO OTHER DOCUMENTS, DISCLOSED TO OTHERS USED FOR MANUFACTURING, OR ANY OTHER PURPOSE, WITHOUT THE WRITTEN AUTHORIZATION FROM MICROSEMI CORP.

THIRD ANGLE PROJECTION

REV	DATE	BY	DESCRIPTION
000001	5/8/14	MJJ	DRILL
000002	5/8/14	MJJ	ATE ADAPTER OR STANDALONE
000003	5/8/14	DHM	LOW NOISE CSAC (LNC5AC), 8421

065-00742-000 LNC5AC

SEE MATERIAL LIST

DO NOT SCALE DRAWING

065-00742-000