

SyncServer S100

GPS Network Time Server



Key Features

- High-bandwidth NTP Time Server
- Stratum 1 operation via GPS satellites
- IPv6 and IPv4 compliant
- Secure web-based management
- SSH, SSL, SCP, SNMP v3, custom MIB, HTTPS, Telnet, and more
- Stratum 2 operation via NTP servers
- Nanosecond time accuracy to UTC
- Single satellite timing
- Two-year warranty

Key Benefits

- Synchronize thousands of client, server and workstation clocks
- Very reliable source of time for your network
- Extremely accurate time source for network synchronization
- Improve network log file accuracy to speed network fault diagnosis and forensics
- Intuitive web interface for easy control and maintenance
- IPv6 compliance futureproofs your network

The SyncServer® S100 GPS Network Time Server synchronizes clocks on servers for small and medium sized enterprises. Accurately synchronized clocks are critical for network log file accuracy, security, billing systems, electronic transactions, database integrity, VoIP, and many other essential applications.

The S100 is an easy to configure and maintain network time server. Configuration of the server is via the intuitive web interface. This very popular and state-of-the-art user interface offers the network administrator ease-of-use and remote access, with intuitive web pages and full control of the server via a standard browser interface.

Once online, the S100 provides reliable network synchronization technology by combining high capacity NTP responsiveness and versatile GPS timing

receiver technology. It supports a wide range of network protocols including IPv4 and IPv6 for easy management and seamless integration into your existing and future network.

The Stratum 1 level S100 derives its time directly from the atomic clocks aboard the GPS satellite system. By using the integrated, 12-channel GPS receiver, every visible satellite can be tracked and used to maintain extremely accurate and reliable time.

If the GPS reference signal is ever lost, the S100 can automatically revert to a Stratum 2 mode and retrieve time from other user designated time servers.

SyncServer S100

S100 NETWORKING EXCELLENCE

NTP Performance

The S100 10/100Base-T Ethernet port is connected to a high-speed microprocessor and a 50 nanosecond accurate clock to assure high bandwidth NTP performance. This more than meets the need of servicing 3200 NTP requests per second while maintaining microsecond caliber timestamp accuracy.

Extensive Protocol Support for Easy Network Integration and Management

All of the expected network management and monitoring protocols are standard in the S100. Secure access protocols such as SSH, SSL, HTTPS, along with legacy protocols such as DHCP and Telnet are included to provide you a choice in server management. SNMP v3 with a custom MIB allows you to automatically monitor the S100 and be advised of any important status changes. Any of these protocols can be quickly and easily disabled via the web based management interface.

Futureproof Your Network

The S100 supports both IPv4 and IPv6. This means your S100 can scale with your network operations and provide value for many years to come.

Best Practices

- Two time servers provide redundant time source protection for time clients.
- Peering between time servers assures time continuity to time clients if GPS is not available.
- Always configure time clients to reference at least two time servers.

Automatic Software Upgrade Availability Notification

The S100 can periodically check the Microsemi web site for newer versions of firmware. If a newer version is available, an informational SNMP trap is sent along with a status message in the web interface.

Point & Click Software Upgrades

Upgrading the firmware in the S100 is easy. Just browse to identify the firmware file and click the upload button. It is just as simple to backup and restore the server configuration files. This intuitive approach simplifies server management.

Time Server Log Files

A running log of activity and server configuration changes is maintained for later reference.

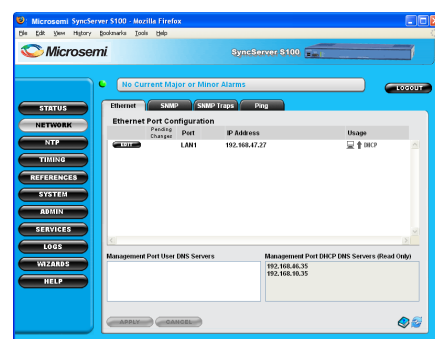
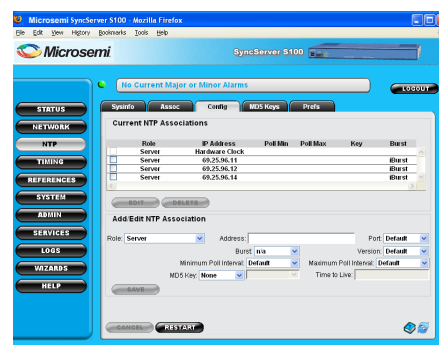
S100 FULL-FEATURED WEB INTERFACE

Intuitive, Easy-to-Use and Secure

The S100 is designed to have the web interface be the primary status and control console. It is organized in to logical groupings such as Status, Network, Timing, etc. The tabbed panels offer easy exploration of features and easy configuration of the server. Typical web interface conventions are followed so that operation is quickly mastered. Server access is password protected, with optional SSL encryption for added security.

Built-in Help System

The complete S100 manual is built into the web interface. The manual opens in a separate browser window. It is organized to match the control buttons and tabs so that information is quickly and easily found. On most pages there is link directly to the manual page for that panel. In addition there are context sensitive rollover descriptors of various features and tabs on any given panel.



SyncServer S100

S100 PERFECT TIMING

Unprecedented NTP Accuracy

The Stratum 1 level S100 derives nanosecond accurate time directly from the atomic clocks aboard the GPS satellite system. By using an integrated, 12-channel GPS receiver, every visible satellite can be tracked and used to maintain accurate and reliable time. Even in urban canyon environments where satellite visibility can be limited, single satellite tracking provides accurate time from as few as one intermittent satellite. If needed, the S100 can also track satellites using a window mounted antenna.

The S100 can support hundreds of thousands of network clients while maintaining microsecond caliber NTP timestamp accuracy. NTP request throughput rates exceed 3200 requests/second while maintaining NTP timestamp accuracy. This easily translates into 0.5-2 ms typical client synchronization accuracy on a LAN.

Peering or Holdover, You Choose

If the GPS reference signal is lost entirely, the S100 can automatically revert to a Stratum 2 mode and retrieve time from other user designated internal or external network time servers (called "peering"). This prevents disruption of time service to the network and the network administrator is notified immediately via SNMP of the change in time reference status. A popular alternative to peering is letting the time server operate in holdover (also called "free run" or "flywheel") where the clock in the time server is allowed to drift if GPS is lost. The user can specify how far to let the clock drift in terms of estimated time accuracy before reverting to peering.

Time Cross-Checking for Peace of Mind Reliability

The S100 can time cross-check the on-board GPS receiver against at least two other time servers. This protects against an improperly operating GPS receiver that can subtly corrupt the time.

Best Practices

- Remember that accurate synchronization is directly related to how often the time clients update their time from the time server.
- Peering with other time servers is easy and provides a redundant source of time as a fallback.

SyncServer S100

Specifications

NETWORK PROTOCOLS

- NTP (v2 - RFC1119, v3 - RFC1305, v4 - RFC5905)
- NTP Unicast, Multicast, Broadcast
- SNTP Simple Network Time Protocol (RFC4330)
- TIME (RFC868)
- DAYTIME (RFC867)
- HTTP/SSL/HTTPS (RFC2616)
- SSH/SCP (Internet Draft)
- SNMPv3 (RFC3584)
- Custom MIB
- DHCP (RFC2131)
- Telnet (RFC854)
- MD5 Authentication (RFC1321)
- IPv4
- IPv6

Key management protocols can be individually disabled.

SERVER PERFORMANCE

- Stratum 1: 3200 NTP requests per second while maintaining an overall time stamp accuracy of 14 microseconds to UTC with a variation of less than 33 microseconds typical. This accuracy is inclusive of all NTP packet delays in and out of the SyncServer as measured at the network interface. Client synchronization accuracy to server on a LAN is 0.5 - 2 milliseconds (typical). The SyncServer easily supports many hundreds of thousands of NTP clients.
- Stratum 2: Peering can be used as the primary mode of operation or as a back up mode in case the GPS reference signal is lost. Time stamp accuracy depends on NTP peer server(s). NTP request handling capacity remains the same regardless of stratum level.
- Holdover Accuracy
 - TCXO (standard): 21 milliseconds/day

GPS RECEIVER/ANTENNA

- 12 channel parallel receiver
- Minimum number of satellites for time: 1 intermittently
- GPS time traceable to UTC (USNO)
- Accuracy: <50 ns RMS, 150 ns peak to peak to UTC, ≥4 satellites tracked. Network factors can reduce client synchronization accuracy to 0.5-2 ms (typical).
- Maximum Belden 9104 cable length: 150' (45 m). For longer cable runs see options.

MECHANICAL/ENVIRONMENTAL

- Size:
 - 1.75" x 17" x 11.25"
 - (4.5 cm x 43.2 cm x 28.6 cm) 1U rack mount
- Power:
 - 100-240 VAC, 50-60 Hz, IEC 60320 C14 connector, power switch.
- Operating temperature: 0°C to +50°C
- Storage temperature: -10°C to +70°C
- Humidity: To 95%, noncondensing
- Certifications: FCC, CE (RoHS), UL, PSE, China RoHS
- Server weight alone: 6.7 lbs (3.0 kgs)
- Shipping package weight: 15 lbs (6.8 kgs)

Front Panel

- LEDs (tri-color green/red/orange)
- Sync: Time reference status
- Network: Network connection status
- NTP: NTP activity
- Alarm: Fault condition
- Serial: DB9-F 9600, N, 8, 1
- USB: (2x) ports for back up, restore, and upgrade operations via the front panel.

Rear Panel

- Network (1x): RJ-45 10Base-T/100Base-TX Ethernet
- GPS: BNC L1, 1575 MHz

CLIENT SOFTWARE

An NTP client is required for client-side synchronization with any network time server, including the S100. Comprehensive time client, server & management software for easy distribution, management and monitoring of time across the network is available.

PRODUCT INCLUDES

S100 Network Time Server, L1 GPS antenna, 50' (15 m) Belden 9104 coaxial cable, 1 ft. antenna mounting mast (30 cm) with two clamps, category 5 patch cable, DB9-M to DB9-F RS-232 extension cable, manual, Enterprise MIB software, power cord, and rack mount ear kit. Two-year warranty [Part 1520R-S100].

OPTIONS

- Window mounted antenna [Part 500-140-619]
- GPS antenna in-line amplifier for cable runs to 300' (90 m) [Part 150-200]
- GPS antenna down/up converter for cable runs to 1500' (457 m)
- Lightning arrestor [Part 150-709 or 150-710]
- Comprehensive time client, server & management software for easy distribution, management and monitoring of time across the network is also available.
- IEEE 1588 / PTP see SyncServer S300 or S350



Rear View



Front View



Microsemi Corporate Headquarters
One Enterprise, Aliso Viejo,
CA 92656 USA

Within the USA: +1 (800) 713-4113
Outside the USA: +1 (949) 380-6100
Sales: +1 (949) 380-6136
Fax: +1 (949) 215-4996

E-mail: sales.support@microsemi.com

© 2015 Microsemi Corporation. All rights reserved. Microsemi and the Microsemi logo are trademarks of Microsemi Corporation. All other trademarks and service marks are the property of their respective owners.

Microsemi Corporation (Nasdaq: MSCC) offers a comprehensive portfolio of semiconductor and system solutions for communications, defense & security, aerospace and industrial markets. Products include high-performance and radiation-hardened analog mixed-signal integrated circuits, FPGAs, SoCs and ASICs; power management products; timing and synchronization devices and precise time solutions, setting the world's standard for time; voice processing devices; RF solutions; discrete components; security technologies and scalable anti-tamper products; Power-over-Ethernet ICs and midspans; as well as custom design capabilities and services. Microsemi is headquartered in Aliso Viejo, Calif., and has approximately 3,400 employees globally. Learn more at www.microsemi.com.

Microsemi makes no warranty, representation, or guarantee regarding the information contained herein or the suitability of its products and services for any particular purpose, nor does Microsemi assume any liability whatsoever arising out of the application or use of any product or circuit. The products sold hereunder and any other products sold by Microsemi have been subject to limited testing and should not be used in conjunction with mission-critical equipment or applications. Any performance specifications are believed to be reliable but are not verified, and Buyer must conduct and complete all performance and other testing of the products, alone and together with, or installed in, any end-products. Buyer shall not rely on any data and performance specifications or parameters provided by Microsemi. It is the Buyer's responsibility to independently determine suitability of any products and to test and verify the same. The information provided by Microsemi hereunder is provided "as is, where is" and with all faults, and the entire risk associated with such information is entirely with the Buyer. Microsemi does not grant, explicitly or implicitly, to any party any patent rights, licenses, or any other IP rights, whether with regard to such information itself or anything described by such information. Information provided in this document is proprietary to Microsemi, and Microsemi reserves the right to make any changes to the information in this document or to any products and services at any time without notice.