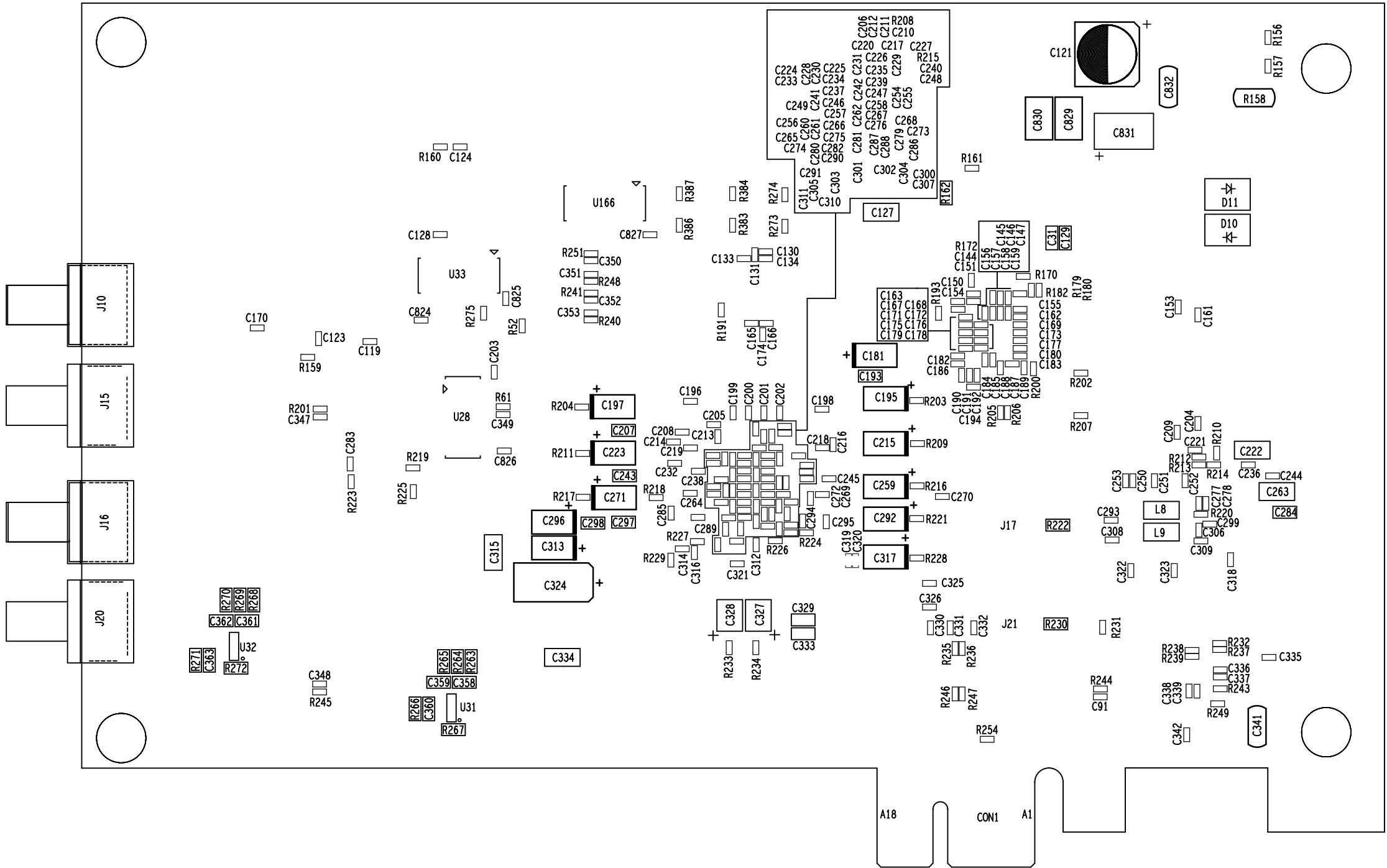


(X) → INSTALL M3 STAND OFF'S AND M3 SCREWS
 PROTRUDING LEADS SHOULD BE TRIMMED AFTER ASSEMBLY

PACTRON	
DATE: SEP 2015	
PROJECT NAME: M2S090S-EVAL-KIT	REV: E
FILM LAYER: ASSEMBLY_TOP_DEBUG	



FILM LAYER : ASSEMBLY_BOTTOM_DEBUG	PROJECT NAME : MS20902-EVAL-KIT	DATE : SEP 2012	PACTRON
REV : E			