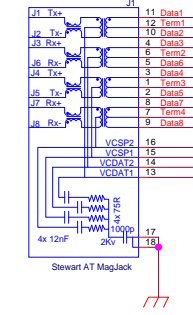
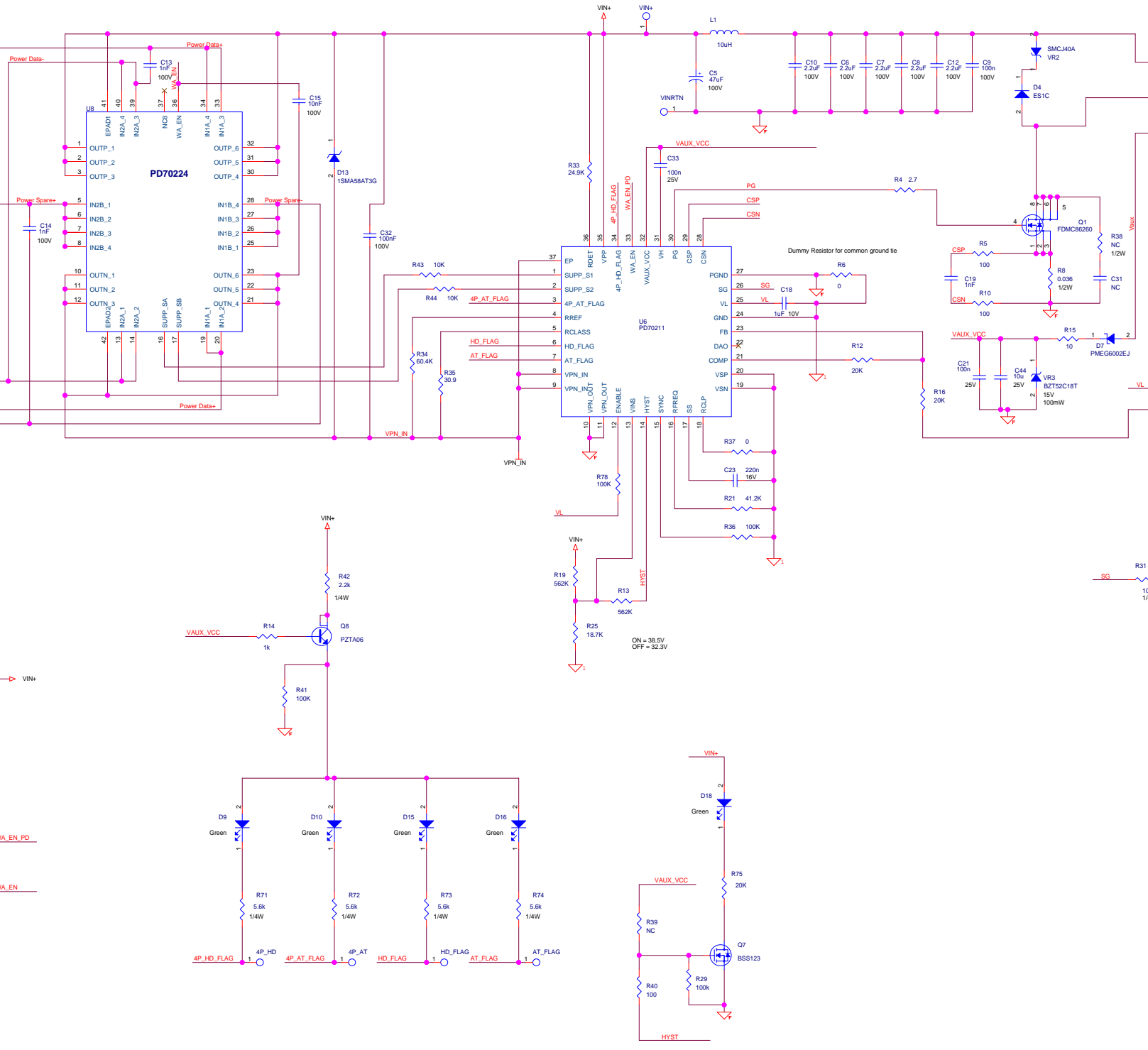
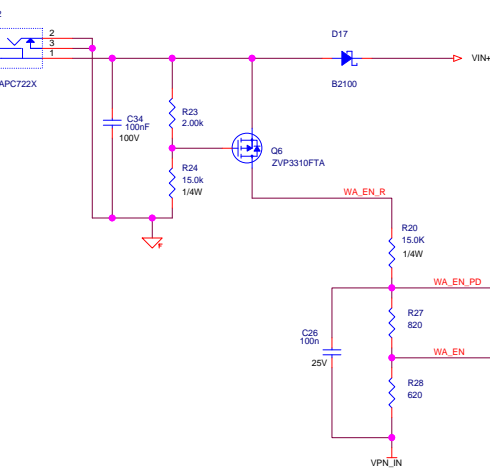
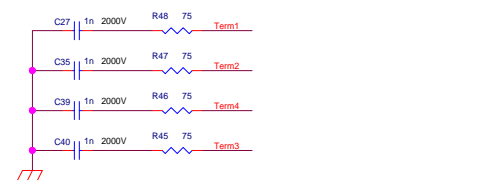
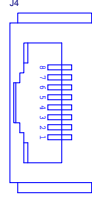


POWER + DATA INPUT



DATA OUT



Transformer Spec:
 Total output power = 51.4W
 Vin = 35V to 57V
 Vout1 = 12V @ 4.25 Amps DC
 Vaux = 13.2V @ 40mA DC

Primary Inductance = 24uH +/- 10%
 Frequency = 250kHz
 Turns Ratio1 Ns1:Np = 0.5
 Turns Ratio Aux Naux:Np = 0.55

Maximum Transient Volt-seconds: 114e-4

Primary Current = 2.6 Arms at Vpri = 35V
 Secondary1 Current = 6.3 Arms at Vpri = 35V
 Auxilliary Current = 44mArms at Vpri = 35V

Drawn By D. MATTOCKS		MICROSEMI ANALOG/MIXED SIGNAL ONE ENTERPRISE, ALISO VIEJO, CA 92656			
Checked By					Title SCHEMATIC, 51W 12V POWER DEVICE
Approved By		Size D	Model No.: SCH_PD70211EV851F-12	DCO/ECO No.: 24770	Rev X4
Approved By					