
Running the Webserver and TFTP Server on SmartFusion2 Devices Using lwIP and FreeRTOS - Libero SoC v11.4

Demo Guide

Superseded

September 2014

Revision History

Date	Revision	Change
17 September 2014	3	Fourth Release
7 April 2014	2	Third Release
09 December 2013	1	Second Release
09 October 2013	0	First Release

Confidentiality Status

This is a non-confidential document.

Superseded

Table of Contents

Preface	4
About this document	4
Intended Audience	4
References	4
Microsemi Publications	4
Running the Webserver and TFTP Server on the SmartFusion2 Device Using lwIP and FreeRTOS	5
Introduction	5
Webserver and TFTP Server Applications on SmartFusion2 Devices	5
Design Requirements	7
Demo Design	7
Introduction	7
Demo Design Features	8
Demo Design Description	8
Setting Up the Demo Design	13
Board Setup Snapshot	14
Running the Demo Design	14
Running Webserver Demo	15
Running TFTP Demo	24
Appendix 1: Board Setup for Running the Demo	29
Appendix 2: Jumper Locations	30
Appendix 3: Running the Design in Static IP Mode	31
Appendix 4: Running the SoftConsole Project in Debug Mode	35
A List of Changes	36
B Product Support	37
Customer Service	37
Customer Technical Support Center	37
Technical Support	37
Website	37
Contacting the Customer Technical Support Center	37
Email	37
My Cases	38
Outside the U.S.	38
ITAR Technical Support	38

Preface

About this document

This demo is for SmartFusion[®]2 system-on-chip (SoC) field programmable gate array (FPGA) devices. It provides instructions on how to use the corresponding reference design.

Intended Audience

The following designers using the SmartFusion2 devices:

- FPGA designers
- Embedded designers
- System-level designers

References

The following references are used in this document:

- lwIP TCP/IP stack:
 - www.sics.se/~adam/lwip/
 - <http://download.savannah.gnu.org/releases/lwip/>
- FreeRTOS stack: www.freertos.org

Microsemi Publications

- *SmartFusion2 Microcontroller Subsystem User Guide*
- *SmartFusion2 SoC FPGA High Speed Serial Interfaces User Guide*
- *Libero SoC User Guide*
- *SmartFusion2 Advanced Development Kit User Guide*

Refer to the following web page for a complete and up-to-date listing of SmartFusion2 device documentation: www.microsemi.com/soc/products/smartfusion2/docs.aspx.

Running the Webserver and TFTP Server on the SmartFusion2 Device Using lwIP and FreeRTOS

Introduction

This demo design explains the TSEMAC features of the SmartFusion2 device and implements the Webserver, TFTP server application on [SmartFusion2 Advanced Development Kit](#). This demo describes:

- Use of SmartFusion2 Ethernet MAC connected to a serial gigabit media independent interface (SGMII) PHY.
- Integration of SmartFusion2 MAC driver with the lwIP TCP/IP stack and the FreeRTOS operating system.
- Implementation of Webserver on the SmartFusion2 Advanced Development Kit board.
- Implementation of TFTP server on the SmartFusion2 Advanced Development Kit board.
- Procedure to run the Webserver and TFTP server designs on the SmartFusion2 Advanced Development Kit board.

The microcontroller subsystem (MSS) of the SmartFusion2 device has an instance of the TSEMAC peripheral. The TSEMAC can be configured between the host PC and the Ethernet network at the following data transfer rates (line speeds):

- 10 Mbps
- 100 Mbps
- 1000 Mbps

Refer to the [SmartFusion2 Microcontroller Subsystem User Guide](#) for more information on the TSEMAC interface for SmartFusion2 devices.

Webserver and TFTP Server Applications on SmartFusion2 Devices

The Webserver and TFTP server demo designs consist of the following layers:

- Application Layer
- Transport Layer
- Firmware Layer

Figure 1 shows the block diagram of the Webserver and TFTP server applications on the SmartFusion2 device.

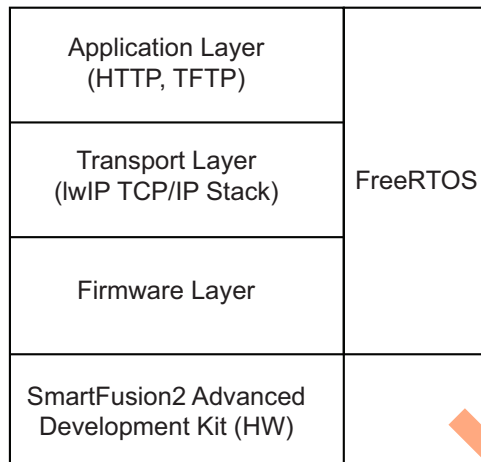


Figure 1 • Block Diagram of Webserver and TFTP Server Applications on SmartFusion2 Device

Application Layer

The Webserver and TFTP server applications are implemented on the SmartFusion2 Advanced Development Kit board.

Webserver handles the HTTP request from the client browser and transfers the static pages to the client in response to their request. These pages run on the client (host PC) browser. When the URL with IP address (for example, <http://10.60.3.25>) is typed in the browser, the HTTP request is sent to the port on the Webserver. The Webserver then interprets the request and responds to the client with the requested page or resource.

The TFTP client (host PC) transfers the file using TFTP PUT command to the SmartFusion2 device (TFTP server). Transferred files are stored in the external flash memory on SmartFusion2 Advanced Development Kit. External flash memory is interfaced to SmartFusion2 SPI_0. Fat file system on SPI flash is used to display the files available in SPI flash memory.

Transport Layer (lwIP TCP/IP Stack)

lwIP TCP/IP stack was developed by Adam Dunkels at the Swedish Institute of Computer Science (SICS). The lwIP stack is suitable for the embedded systems because of less resource usage. It can be used with or without the operating system. The lwIP consists of the actual implementations of the IP, ICMP, UDP, and TCP protocols, as well as the support functions such as buffer and memory management.

For more information on the design and implementation, refer to www.sics.se/~adam/lwip/doc/lwip.pdf.

The lwIP is available (under a BSD license) in C source-code format for download from the following path: <http://download.savannah.gnu.org/releases/lwip/>

RTOS and Firmware Layer

FreeRTOS is an open source real time operating system kernel. FreeRTOS is used in this demo to prioritize and schedule the tasks. Refer to <http://www.freertos.org> for more information and the latest source code.

The firmware provides the software driver implementation to configure and control the following MSS components:

- Ethernet MAC
- MMUART
- GPIO
- SPI
- RTC

Design Requirements

Table 1 • Design Requirements

Design Requirements	Description
Hardware Requirements	
SmartFusion2 Advanced Development Kit <ul style="list-style-type: none">• 12 V adapter• FlashPro5• USB A to Mini-B cable	Rev B or later
RJ45 cable	-
Host PC or Laptop	Windows 64-bit Operating System
Software Requirements	
Libero [®] System-on-Chip (SoC) for viewing the design files	v11.4
FlashPro Programming Software	v11.4
SoftConsole	v3.4SP1
Host PC Drivers	USB to UART drivers
One of the following serial terminal emulation programs: <ul style="list-style-type: none">• HyperTerminal• TeraTerm• PuTTY	-
Browser	Mozilla Firefox or Internet Explorer

Demo Design

Introduction

The demo design files are available for download from the following path in the Microsemi[®] website:
www.microsemi.com/soc/download/rsc/?f=sf2_webserver_tftp_tcp_liberov11p4_dg_df

The demo design files include:

- Libero SoC hardware project with SoftConsole firmware project
- Sample files
- Programming files
- readme.txt file

Figure 2 shows the top-level structure of the design files. For further details, refer to the `Readme.txt` file.

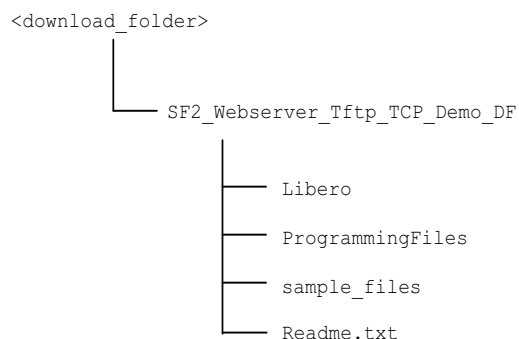


Figure 2 • Demo Design Files Top Level Structure

Demo Design Features

The demo has the following options:

- Webserver
 - RTC and Ethernet Interface data display
 - Blinking LEDs
 - HyperTerminal Display
 - SmartFusion2 Google Search
 - SmartFusion2 Gadgets
- TFTP server
 - Transfers files from host PC to SmartFusion2 Advanced Development Kit

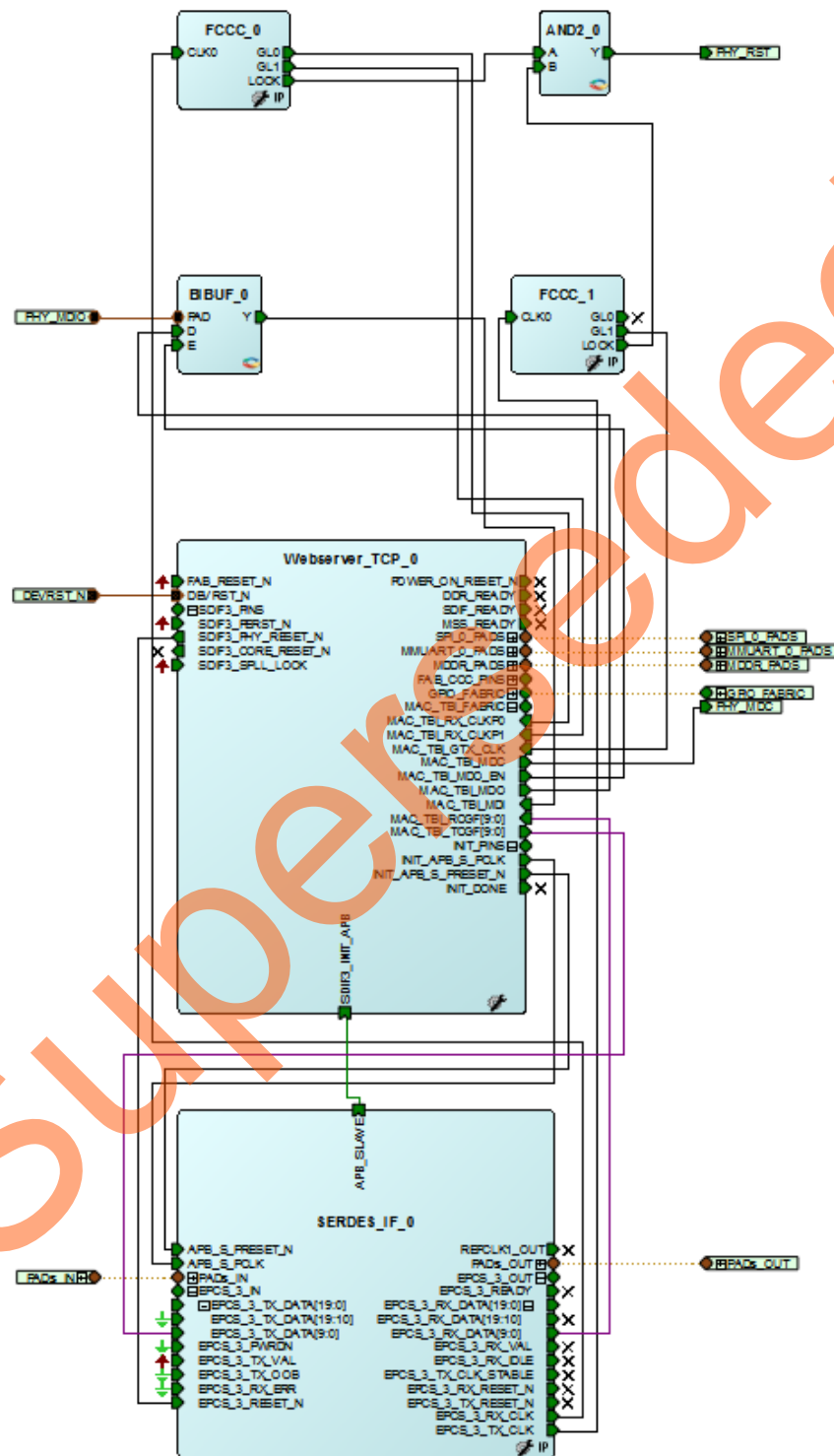
Demo Design Description

The demo design is implemented using a SGMII PHY interface by configuring the TSEMAC for the ten-bit interface (TBI) operation. For more information on the TSEMAC TBI interface, refer to the [SmartFusion2 Microcontroller Subsystem User Guide](#).

The demo design comprises of:

- [Libero SoC Hardware Project](#)
- [SoftConsole Firmware Project](#)

Figure 3 shows the Libero SoC hardware design implementation for this demo design.



Libero hardware project uses the following SmartFusion2 MSS resources and IPs:

1. **TSEMAC TBI** interface
2. **MMUART_0** for RS-232 communications on the Advanced Development Kit.
3. **SPI_0**: To access external Flash memory at25df641
4. **COREAHBLSRAM**: For TFTP application stack.
5. General purpose input and output (GPIO): Interfaces the light emitting diodes (LEDs)
6. High speed serial interface (SERDESIF) **SERDES_IF IP**, configured for **SERDESIF_3 EPCS lane3** as shown in [Figure 4 on page 10](#).

For more information on high speed serial interfaces, refer to the [SmartFusion2 SoC FPGA High Speed Serial Interfaces User Guide](#).

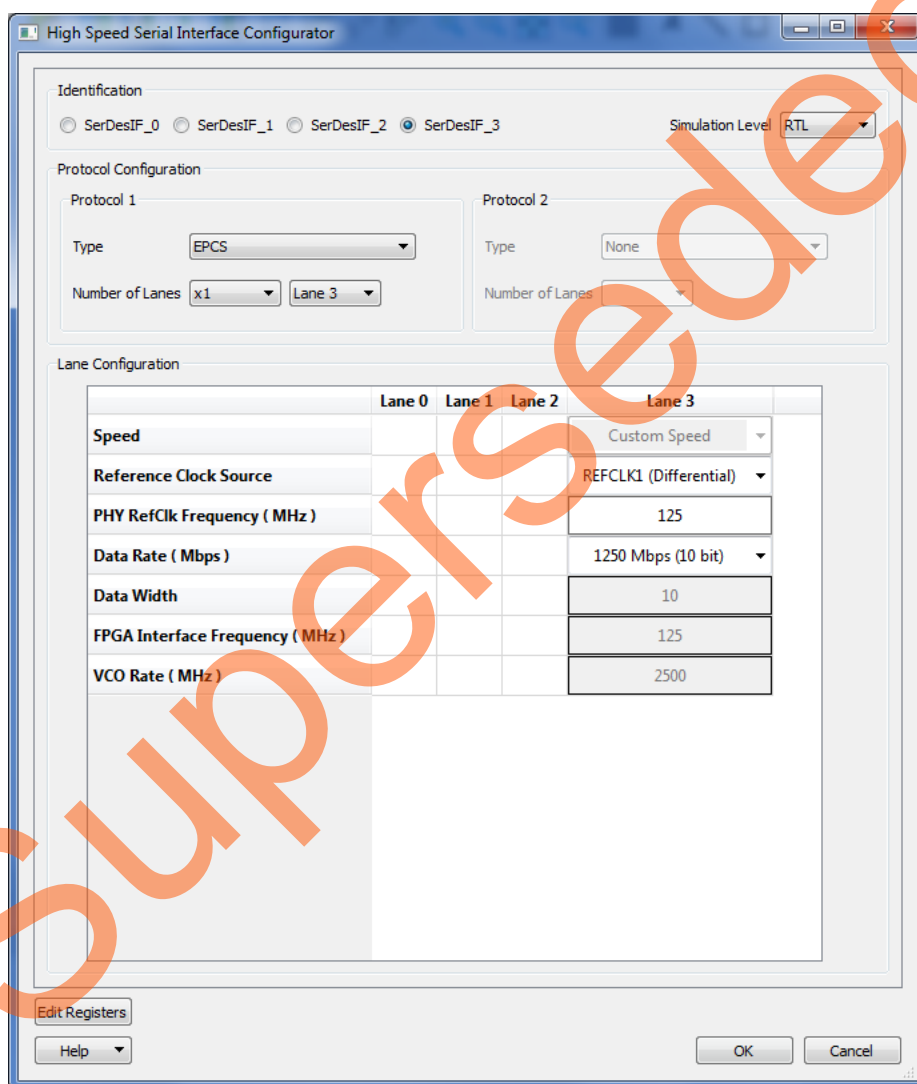


Figure 4 • High Speed Serial Interface Configurator Window

Package Pin Assignments

Package pin assignments for LED's and PHY interface signals are shown in [Table 2](#) and [Table 3](#). [Table 2](#) shows the port names for the package pins.

Table 2 • LED to Package Pins Assignments

Port Name	Package Pin
LED_1	D26
LED_2	F26
LED_3	A27
LED_4	C26
LED_5	C28
LED_6	B27
LED_7	C27
LED_8	E26

[Table 3](#) shows the port names and directions for the package pins.

Table 3 • PHY Interface Signals to Package Pins Assignments

Port Name	Direction	Package Pin
PHY_MDC	Output	F3
PHY_MDIO	Input	K7
PHY_RST	Output	F2

SoftConsole Firmware Project

Invoke the SoftConsole project using Standalone Softconsole IDE. Refer to the [Libero SoC User Guide](#) for more information.

The following stacks are used for this demo design:

- **lwIP TCP/IP** stack version 1.4.1 (www.sics.se/~adam/lwip/)
- **FreeRTOS** (www.freertos.org)

[Figure 1 on page 6](#) shows the block diagram of the Webserver and TFTP server applications on SmartFusion2 device used in this demo design.

Figure 5 shows SoftConsole software directory structure of the demo design.

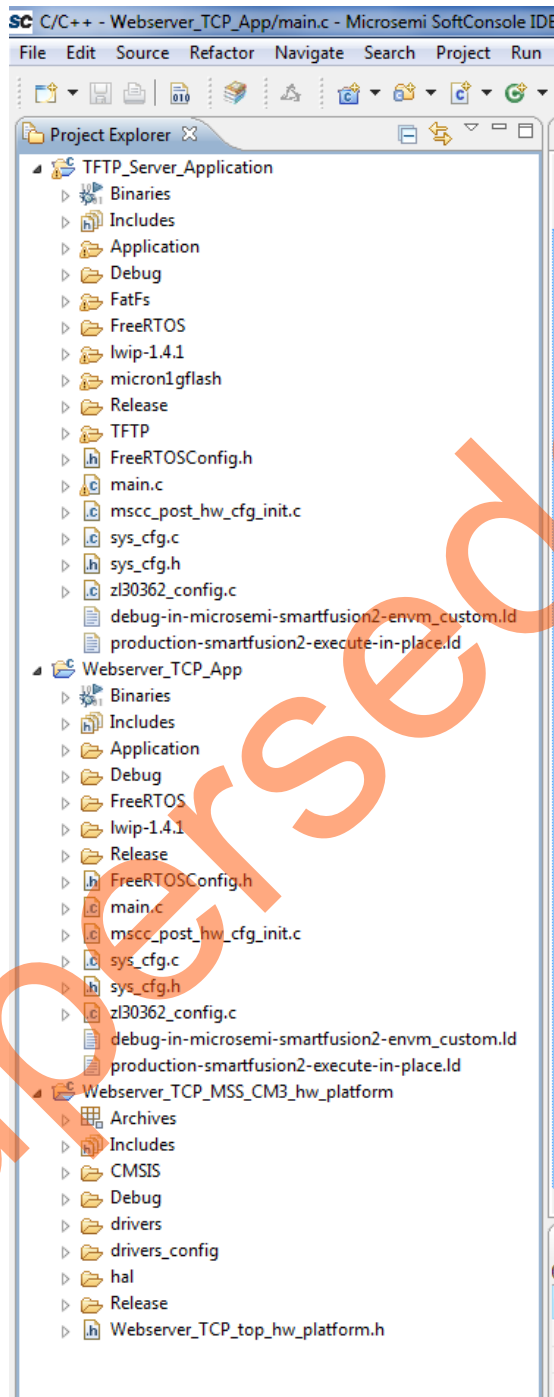


Figure 5 • SoftConsole Project Explorer Window

The SoftConsole workspace consists of the following three projects.

- TFTP_Server_Application: Contains TFTP server application using LWIP, FreeRTOS and FatFs.
- Webserver_TCP_app: Contains Webserver application implementation using LWIP and FreeRTOS.
- Webserver_TCP_MSS_CM3_hw_platform: Contains all the firmware and hardware abstraction layers that correspond to the hardware design. This project is configured as a library and is referenced by Webserver_TCP_MSS_CM3_app and TFTP_Server_app application projects. The contents of this folder get overwritten every time the root design is regenerated in the Libero SoC software.

Note: To run the SoftConsole project in debug mode refer to "[Appendix 4: Running the SoftConsole Project in Debug Mode](#)" on page 35.

Setting Up the Demo Design

The following steps describe how to setup the demo for SmartFusion2 Advanced Development Kit board:

1. Connect the Host PC to the J33 Connector using the USB A to mini-B cable. The USB to UART bridge drivers are automatically detected.
2. From the detected four COM ports, right-click any one of the COM ports and select **Properties**. The selected COM port properties window is displayed, as shown in [Figure 6](#).
3. Ensure to have the **Location** as on **USB FP5 Serial Converter C** in the **Properties** window as shown in [Figure 6](#).

Note: Make a note of the COM port number for serial port configuration and ensure that the COM port Location is specified as on **USB FP5 Serial Converter C**.

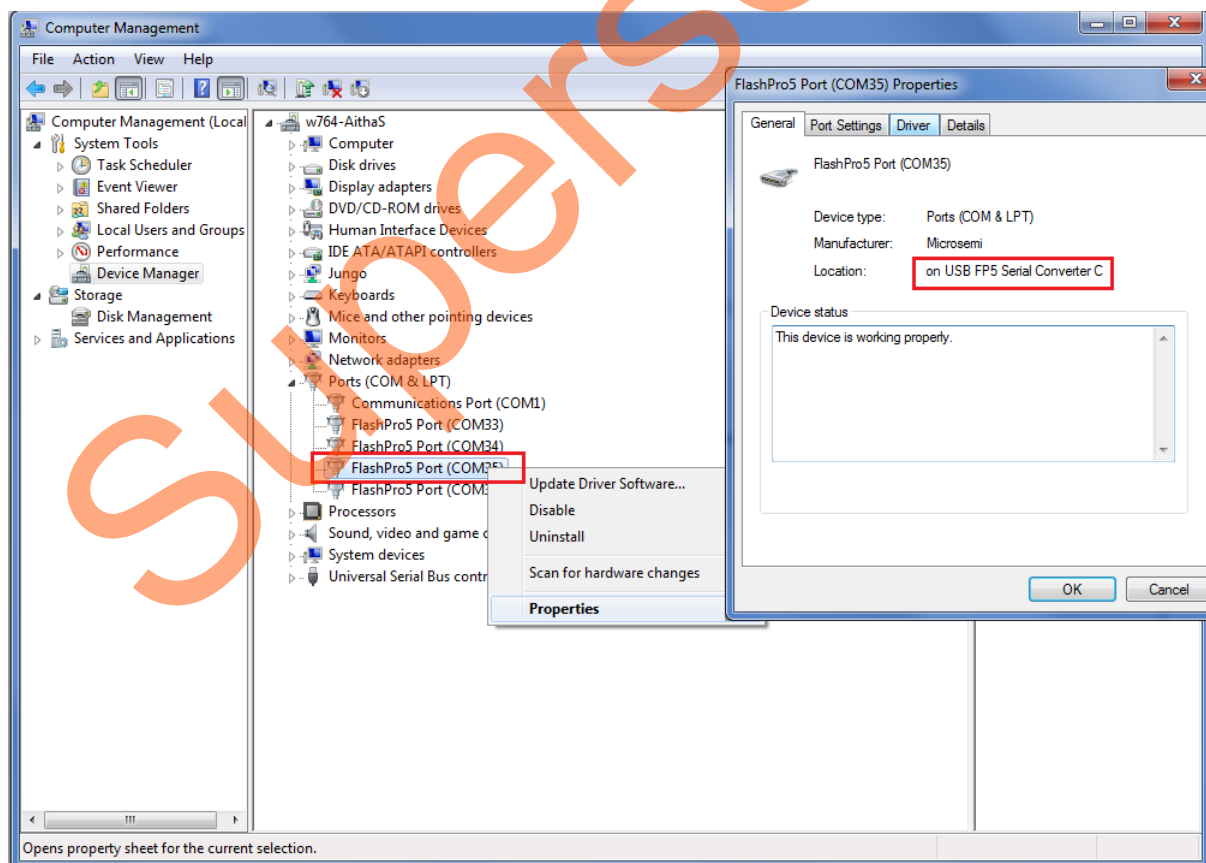


Figure 6 • Device Manager Window

4. Install the USB driver if the USB drivers are not detected automatically.
5. Install the FTDI D2XX driver for serial terminal communication through the FTDI mini USB cable.
Download the drivers and installation guide from:
www.microsemi.com/soc/documents/CDM_2.08.24_WHQL_Certified.zip

6. Connect the jumpers on the SmartFusion2 Advanced Development Kit board as shown in Table 4. For information on jumper locations, refer to "Appendix 2: Jumper Locations" on page 30.

Caution: Before making the jumper connections, switch off the power supply switch, SW7.

Table 4 • SmartFusion2 FPGA Advanced Development Kit Jumper Settings

Jumper	Pin (from)	Pin (to)	Comments
J116,J353,J354,J54	1	2	These are the default jumper settings of the Advanced Development Kit Board. Make sure these jumpers are set accordingly.
J123	2	3	
J124,J121,J32	1	2	JTAG programming via FTDI
J118,J119	1	2	Programming SPI Flash

7. Connect the power supply to the J42 connector in the SmartFusion2 Advanced Development Kit.
8. This design example can run in both Static IP and Dynamic IP modes. By default, programming files are provided for dynamic IP mode.
 - For static IP, connect the host PC to the J21 connector of the SmartFusion2 Advanced Development Kit Board using an RJ45 cable.
 - For dynamic IP, connect any one of the open network ports to the J21 connector of the SmartFusion2 Advanced Development Kit Board using an RJ45 cable.

Board Setup Snapshot

Snapshots of the SmartFusion2 Advanced Development Kit board with all the setup made is given in "Appendix 1: Board Setup for Running the Demo" on page 29.

Running the Demo Design

1. Download the demo design from:
www.microsemi.com/soc/download/rsc/?f=sf2_webserver_tftp_tcp_liberov11p4_dg_df.
2. Switch **ON** the SW7 power supply switch.
3. Start any serial terminal emulation program such as:
 - HyperTerminal
 - PuTTY
 - Tera Term

Note: In this demo HyperTerminal is used.

The configuration for the program is:

- Baud Rate: 115200
- Eight data bits
- One stop bit
- No Parity
- No flow control

For information on configuring the serial terminal emulation programs, refer to the [Configuring Serial Terminal Emulation Programs Tutorial](#).

Running Webserver Demo

1. Launch the FlashPro software.
2. Click **New Project**.
3. In the **New Project** window, type the project name.

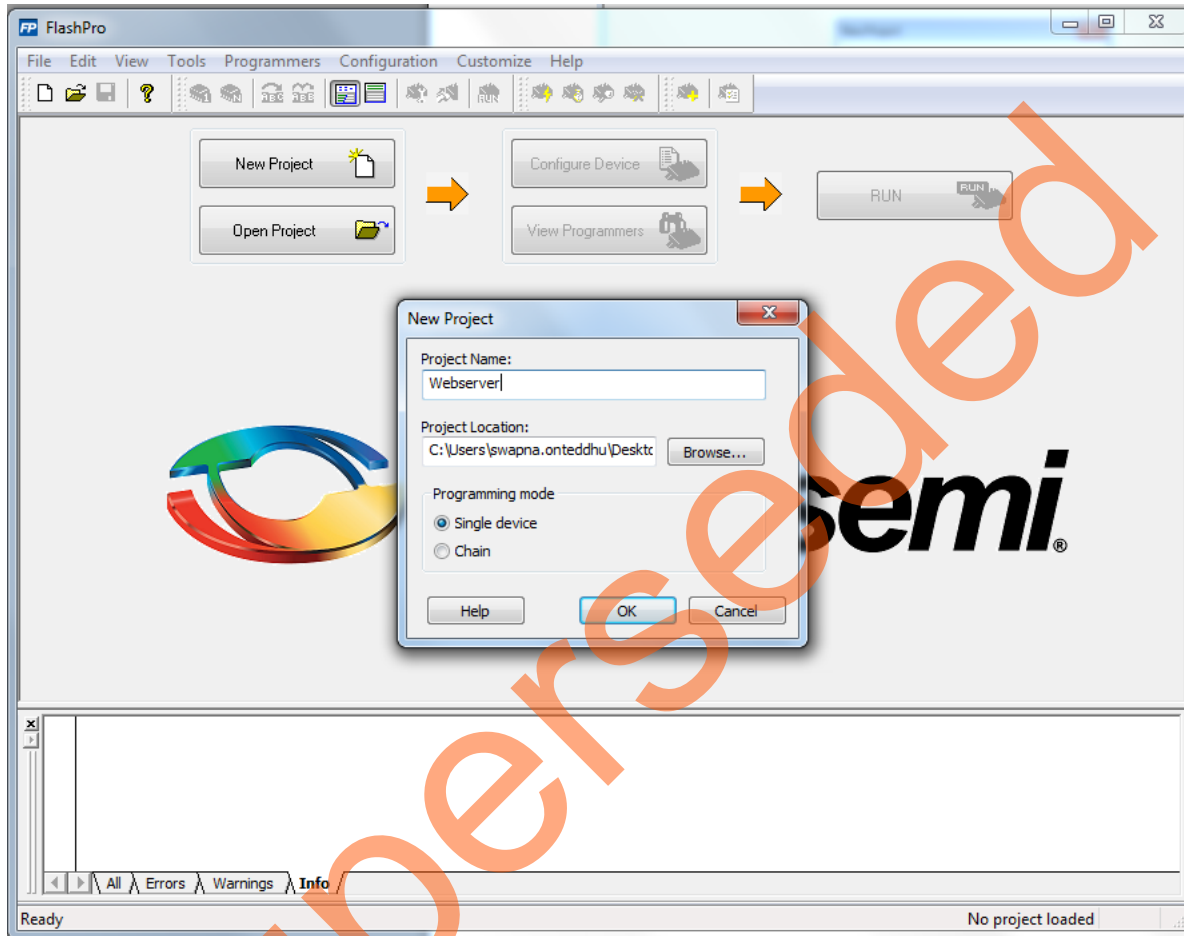


Figure 7 • FlashPro New Project

4. Click **Browse** and navigate to the location where the project is required to be saved.
5. Select **Single device** as the **Programming mode**.
6. Click **OK** to save the project.
7. Click **Configure Device**.

8. Click **Browse** and navigate to the location where the `Webserver_TCP_top.stp` file is located and select the file. The default location is:
`<download_folder>\SF2_Webserver_Tftp_TCP_Demo_DF\ProgrammingFiles\webserver\Webserver_TCP_top.stp`. The required programming file is selected and is ready to be programmed in the device.

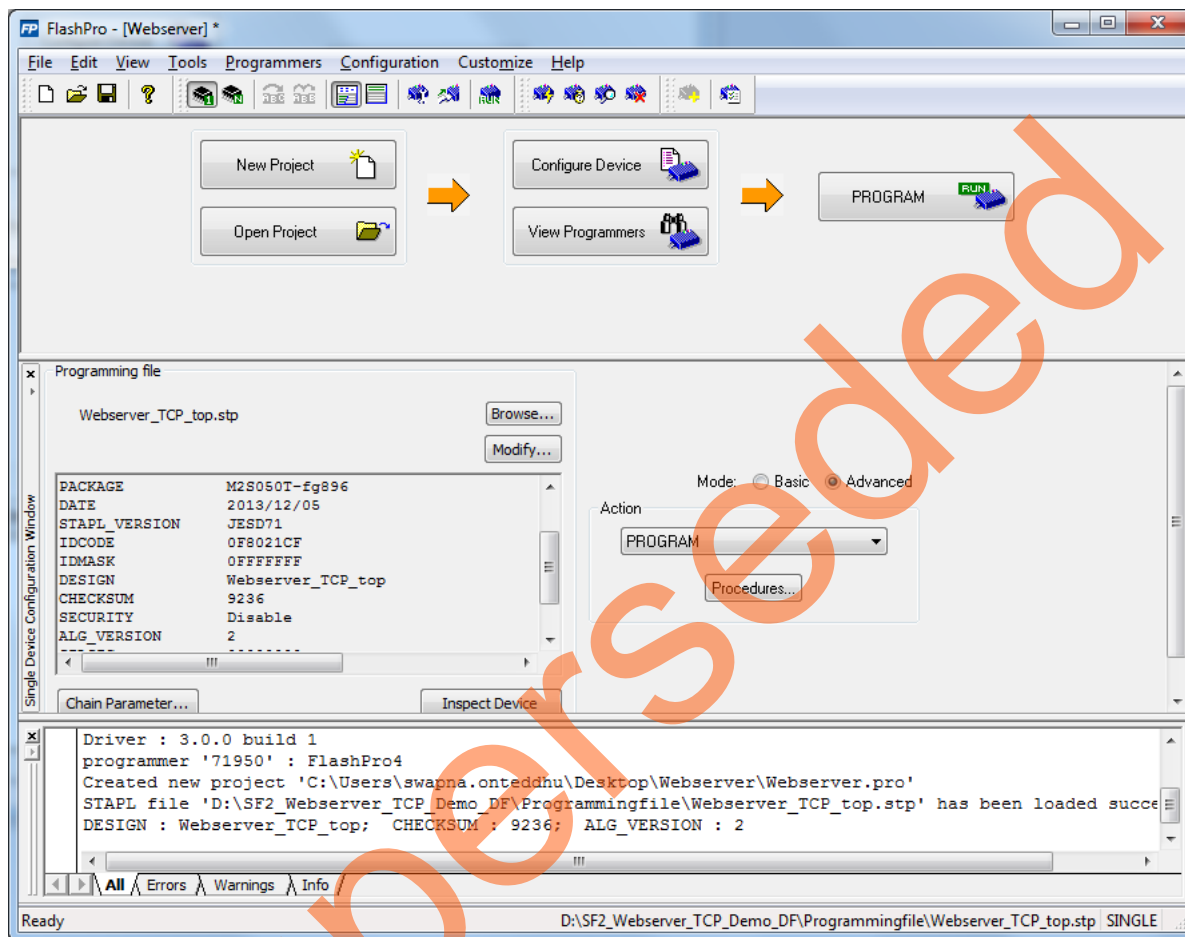


Figure 8 • FlashPro Project Configured

9. Click **PROGRAM** to start programming the device. Wait until a message is displayed indicating that the program has passed.

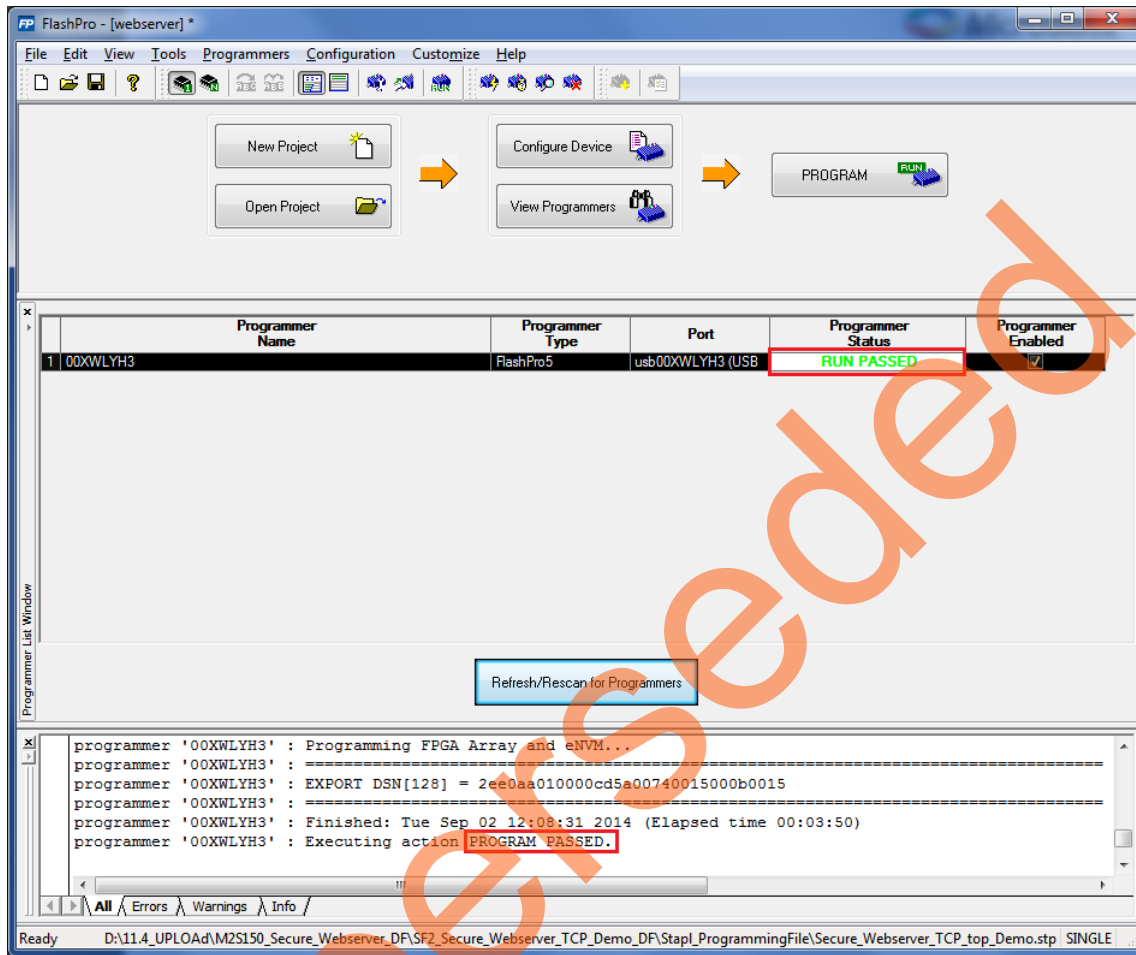


Figure 9 • FlashPro Program Passed

Note: The demo can be run in static and dynamic modes. To run the design in Static IP mode, follow the steps mentioned in the "Appendix 3: Running the Design in Static IP Mode" on page 31

10. Power cycle the SmartFusion2 Advanced Development board.

A welcome message with the IP address is displayed in the HyperTerminal window as shown in Figure 10.

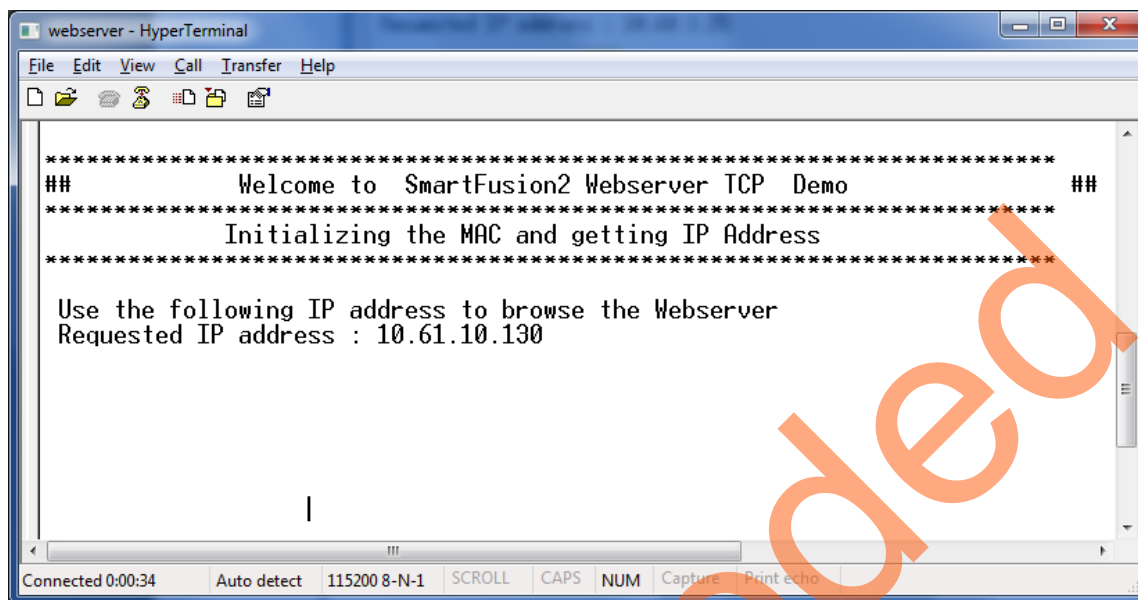


Figure 10 • HyperTerminal with IP Address

11. The IP address displayed on the HyperTerminal should be entered in the address bar of the browser (Mozilla Firefox) to run the Webserver. The main menu of the Webserver is shown in Figure 11.

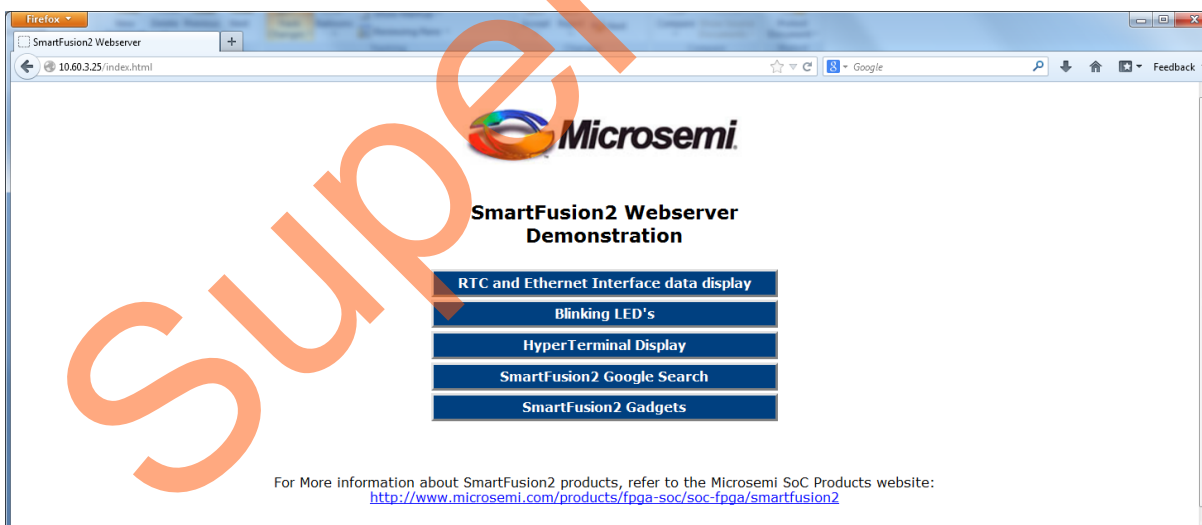


Figure 11 • Main Menu of the Webserver

12. Click **RTC and Ethernet Interface data display** on the main menu of Webserver demo.

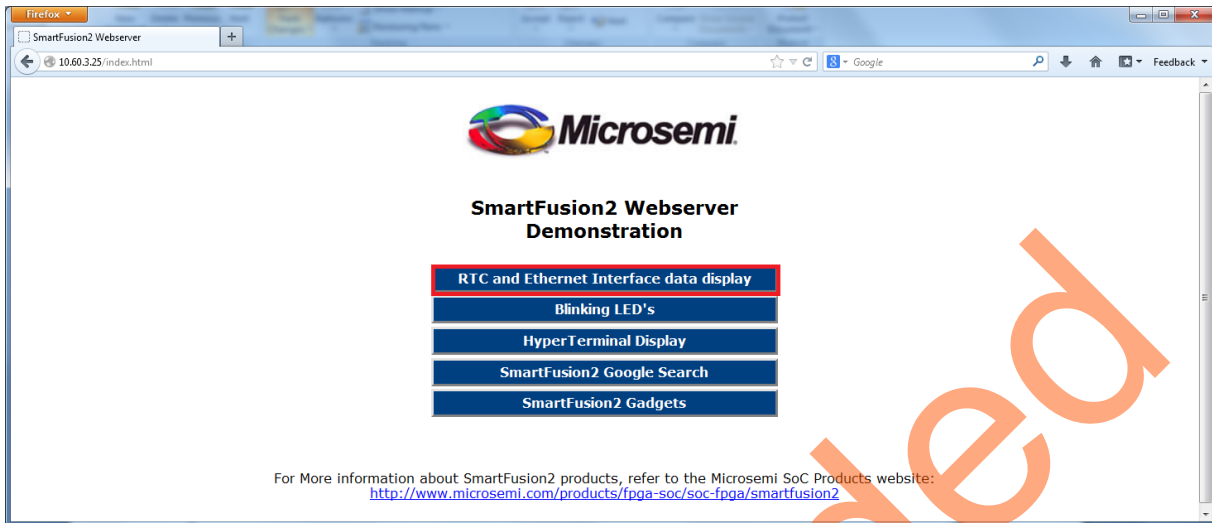


Figure 12 • Selecting RTC and Ethernet Interface Data Display

Figure 13 shows a webpage with RTC values and Ethernet MAC properties.

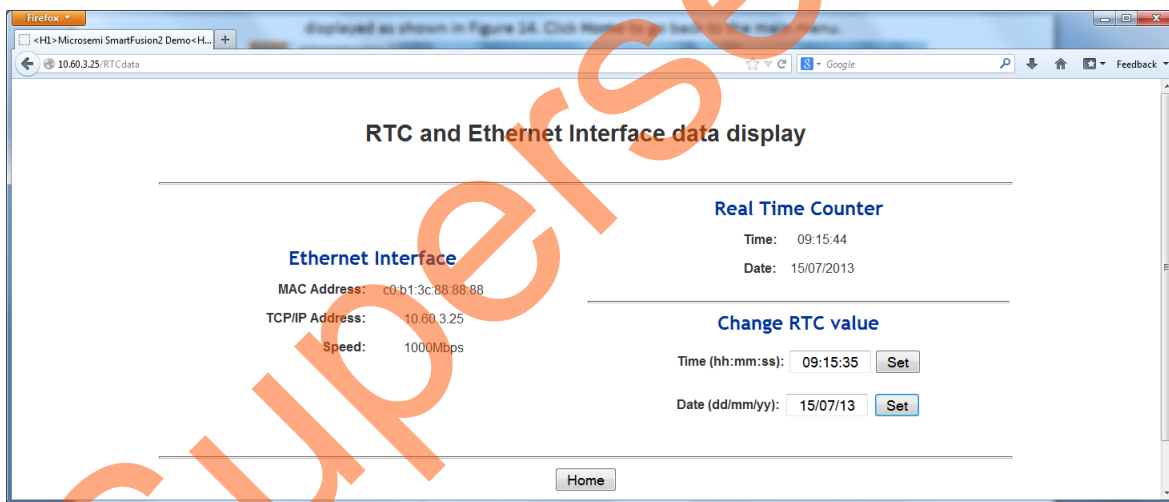


Figure 13 • Webserver RTC and Ethernet Interface Data Display

13. Click **Home** to go back to the main menu.

14. Click **Blinking LED's** on the main menu.

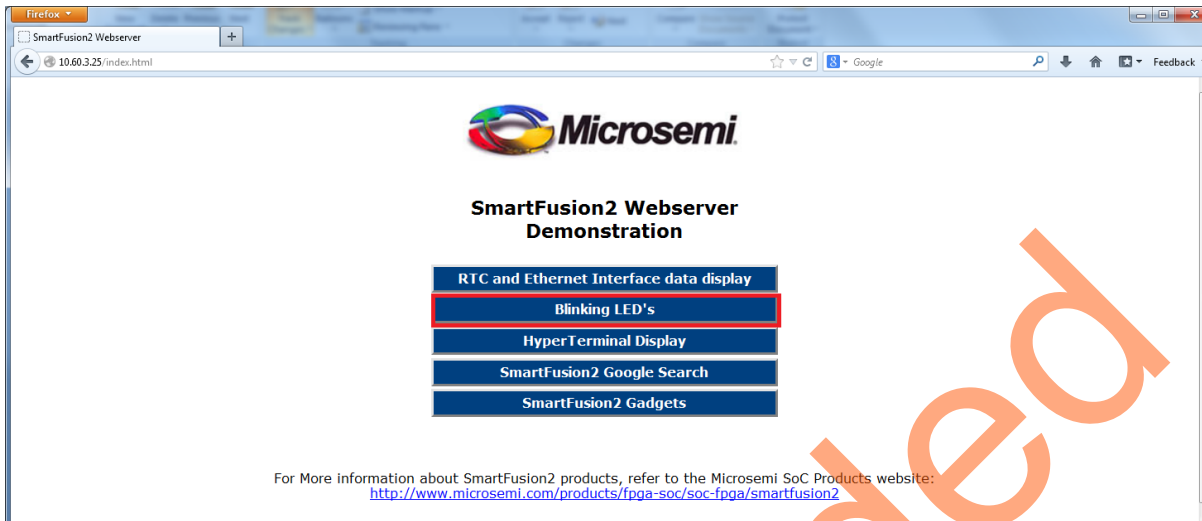


Figure 14 • Selecting Blinking LEDs

Figure 15 shows a running LED pattern on the board. The webpage gives an option to enter the values to blink the LED's manually.

15. Enter any number between 1-255 to toggle the LEDs manually. For example, if 1 is entered, LED1 goes OFF. If 255 is entered, all the eight LEDs go OFF.

Note: The SmartFusion2 Advanced Development Kit has Active Low LEDs.

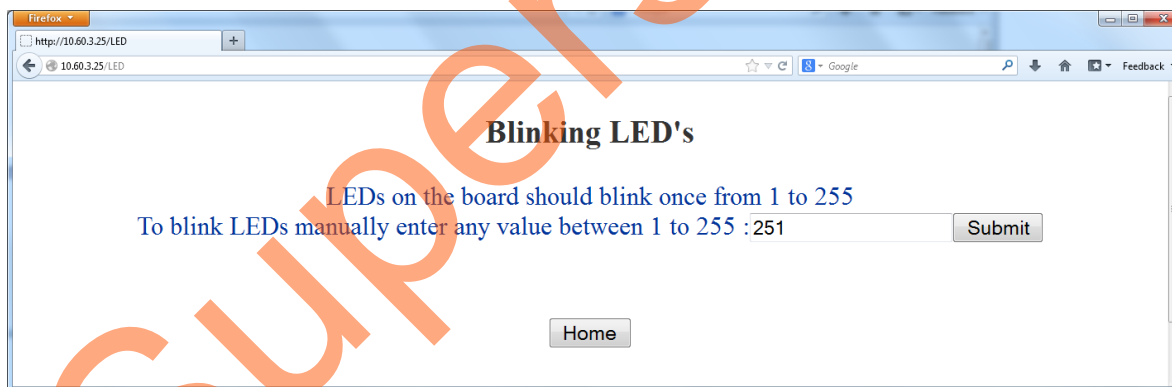


Figure 15 • Blinking LEDs

16. Click **Home** to go back to the main menu.

17. Click **HyperTerminal Display** on the main menu.

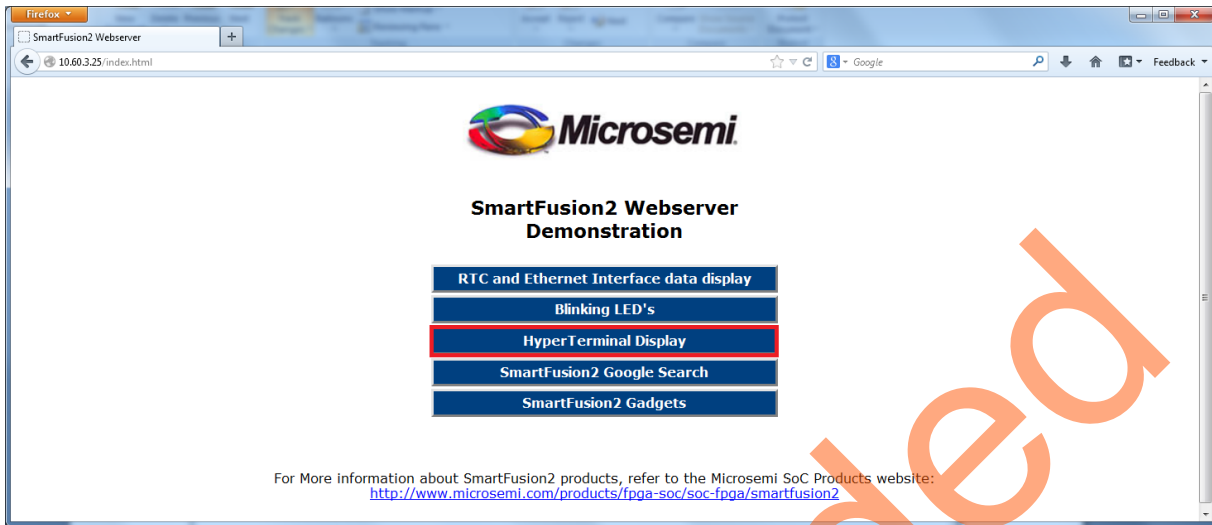


Figure 16 • Selecting HyperTerminal Display

Figure 17 shows a webpage that gives an option to enter a string value.

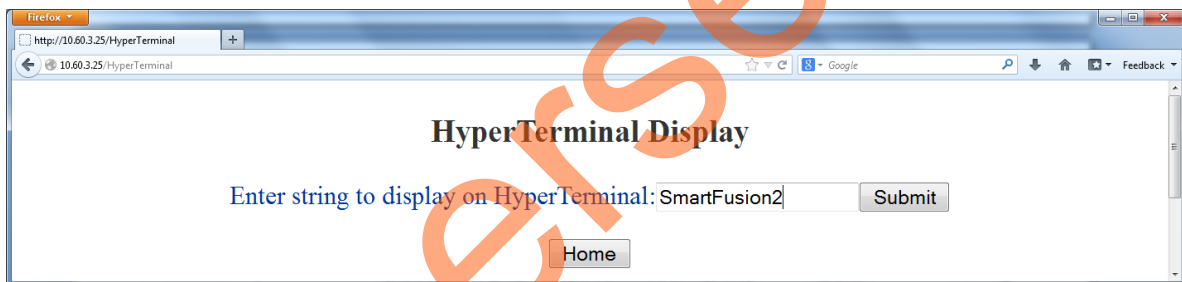


Figure 17 • Webserver HyperTerminal Display

The entered string is displayed on HyperTerminal as shown in Figure 18.

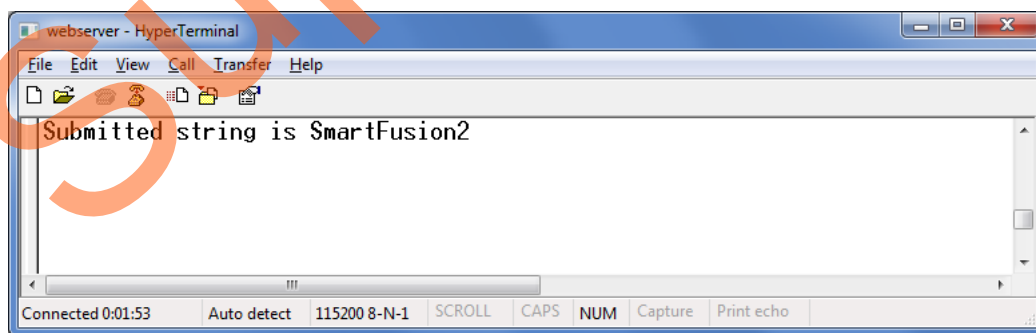


Figure 18 • String Display on HyperTerminal

18. Click **Home** to go back to the main menu.

19. Click **SmartFusion2 Google Search** on the main menu.

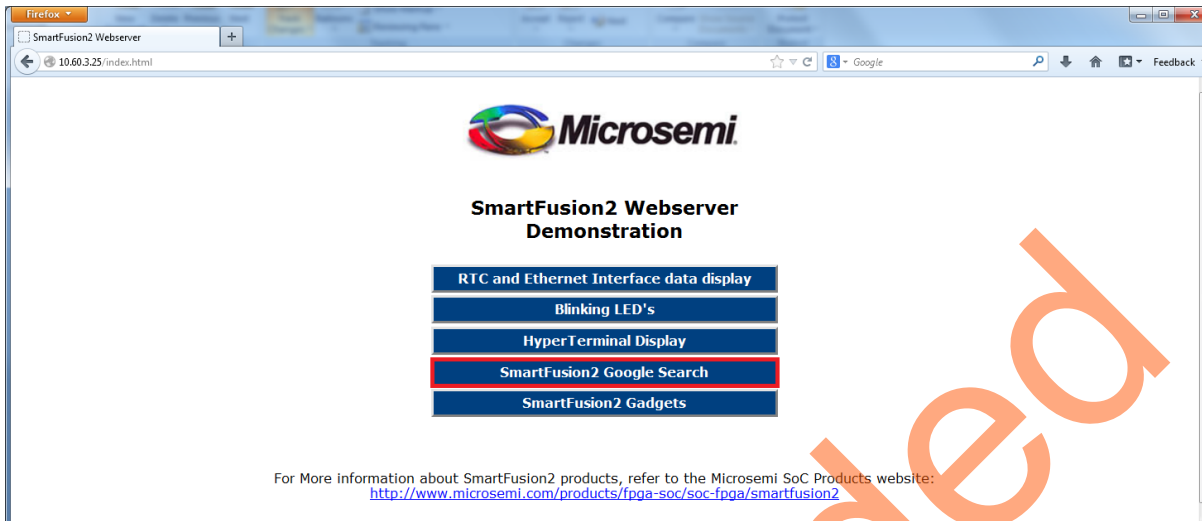


Figure 19 • Selecting SmartFusion2 Google Search

Note: Internet connection is required with proper access rights to get to the SmartFusion2 Google Search page

Figure 20 shows a webpage with Google search option.

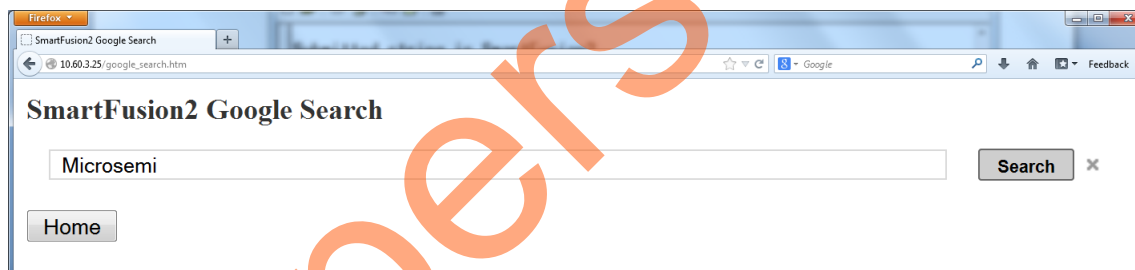


Figure 20 • Webserver SmartFusion2 Google Search

20. Click **Home** to go back to the main menu.

21. Click on **SmartFusion2 Gadgets** on the main menu.

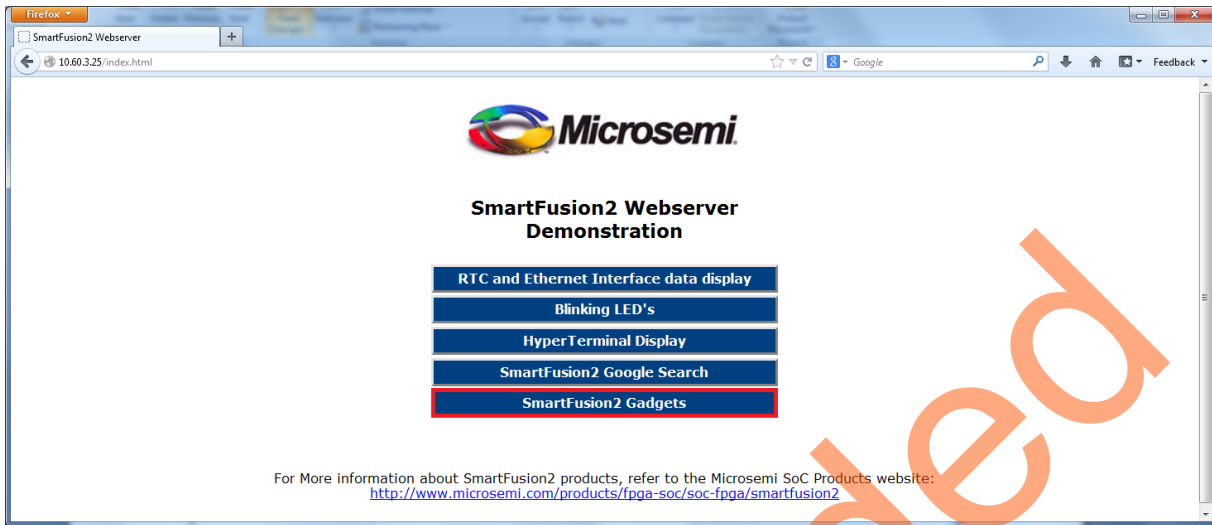


Figure 21 • Selecting SmartFusion2 Gadgets

Note: Internet connection is required with proper access rights to get to the SmartFusion2 Gadgets page. Figure 22 shows the Gadgets page displaying the US Zip code look-up.

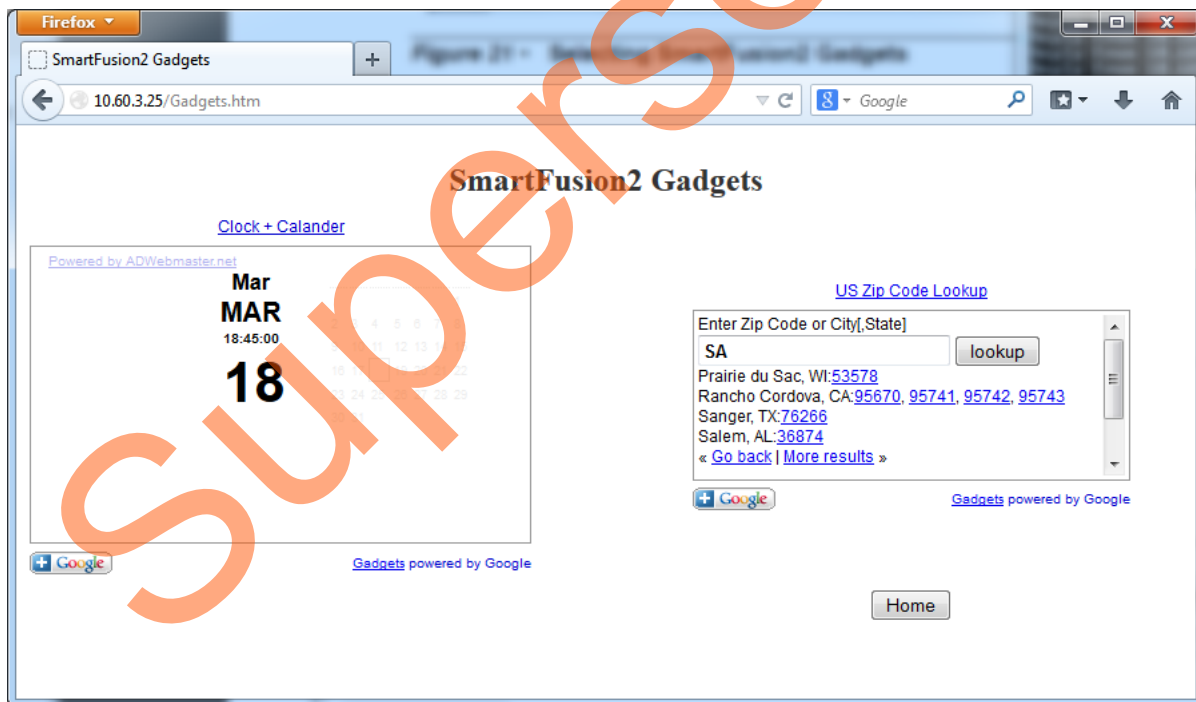


Figure 22 • Webserver SmartFusion2 Gadgets

22. Click **Home** to go back to the main menu.

Running TFTP Demo

1. To enable the TFTP client in host PC, navigate to **Control Panel > Programs**. Click **Turn Windows Features On or Off** and select the TFTP client in **Windows Features** as shown in Figure 23.

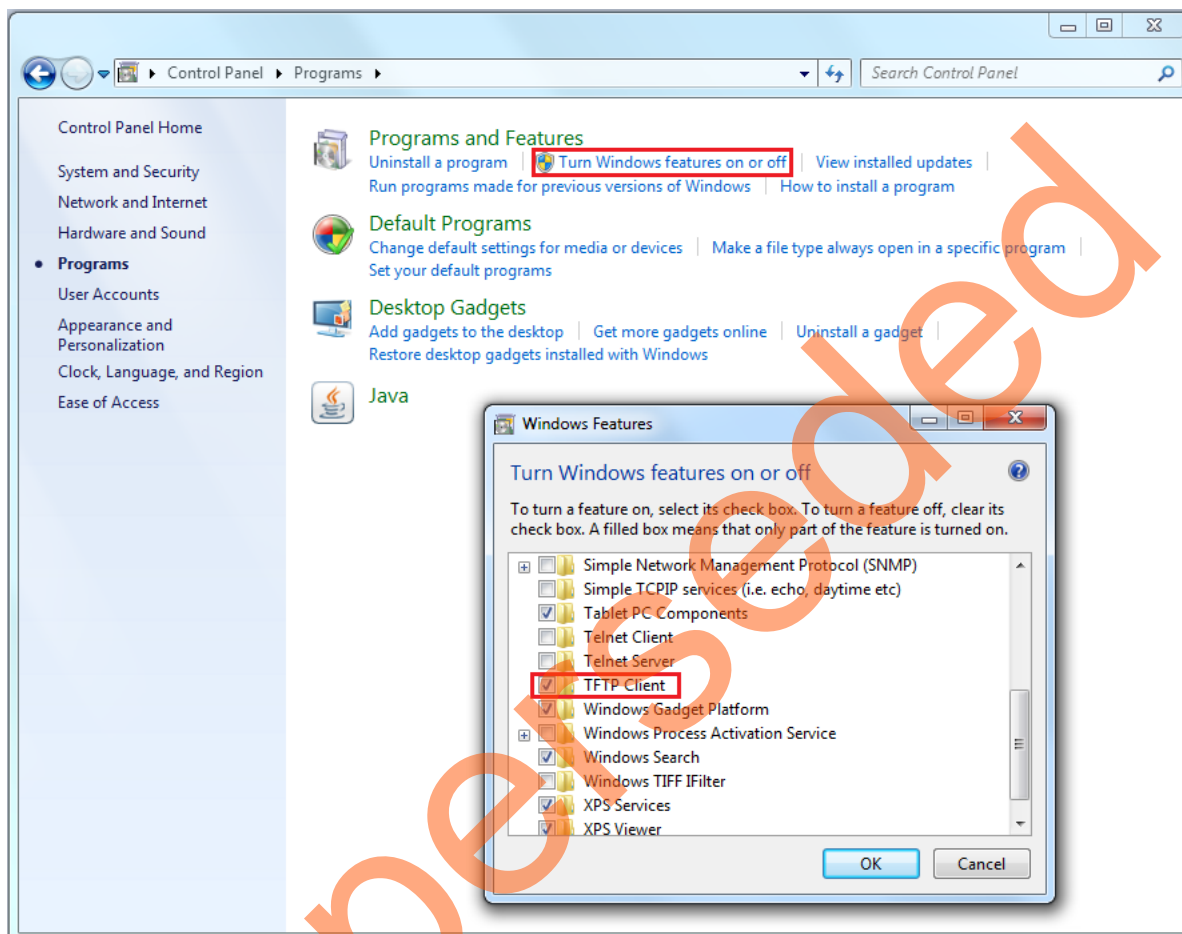


Figure 23 • Enabling TFTP Client in Host PC

2. Navigate to **Control Panel > Windows Firewall** and click **Turn Windows Firewall On or Off**. Select **Turn off Windows Firewall** under Domain network location settings as shown in Figure 24.

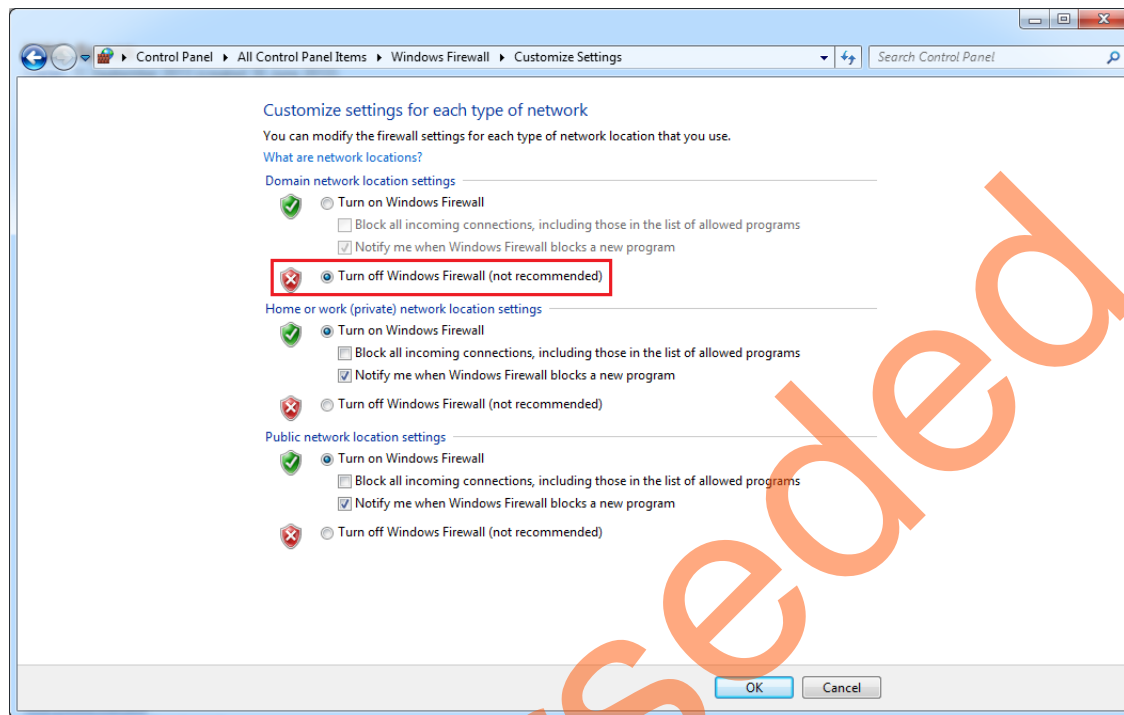


Figure 24 • Windows Firewall Settings

3. Launch the FlashPro software and program the device with `<download_folder>\SF2_Webserver_Tftp_TCP_Demo_DF\ProgrammingFiles\Tftp_Server\Webserver_TCP_top_tftp.stp`. Wait until a message indicating that the program passed is displayed. Refer to Step 1. to Step 9. of "Running Webserver Demo" section on page 15.

Note: To run the design in static IP mode, follow the steps mentioned in the "Appendix 3: Running the Design in Static IP Mode" on page 31.

4. Power cycle the SmartFusion2 Advanced Development Kit board.

HyperTerminal program displays the welcome message and option to clear the SPI Flash contents as shown in [Figure 25](#).

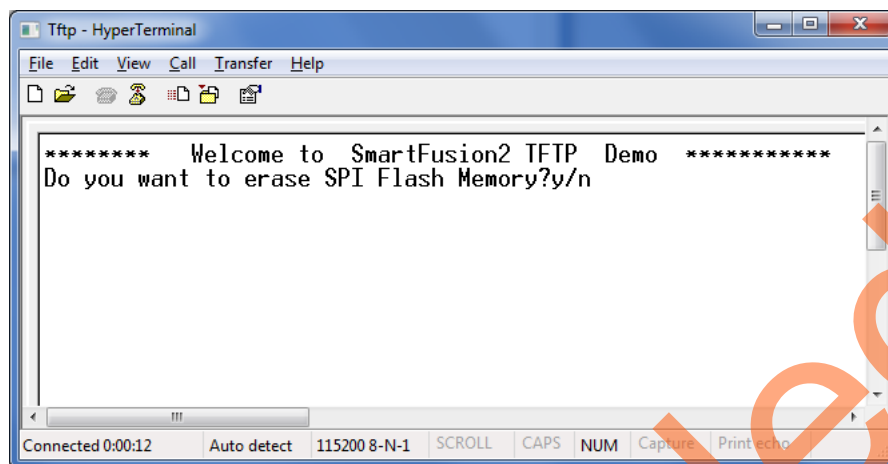


Figure 25 • HyperTerminal with Welcome Message

5. Type **y** to erase the SPI Flash memory contents, as shown in [Figure 26](#).

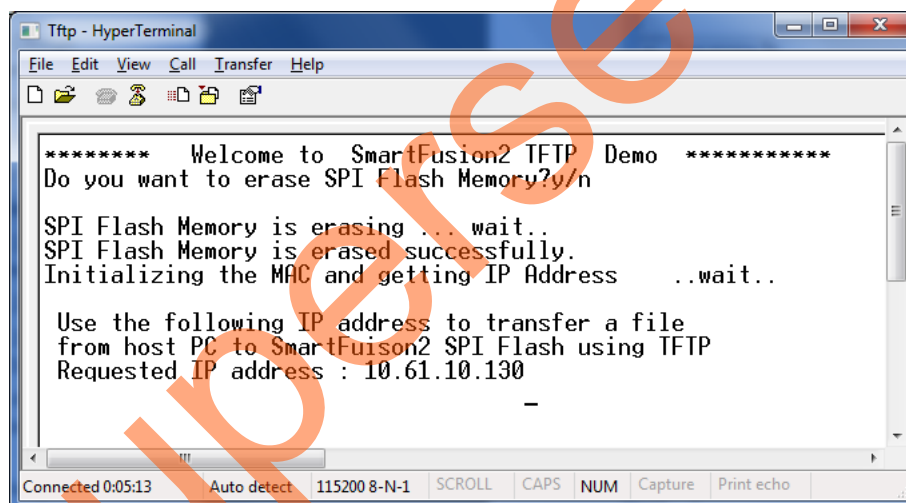


Figure 26 • HyperTerminal with IP Address - Erasing SPI Flash Memory

6. Type any key other than **y** to skip SPI Flash erasing, as shown in [Figure 27](#) on page 27.

The HyperTerminal program displays the dynamic IP address also, as shown in [Figure 26](#) on [page 26](#) or [Figure 27](#).

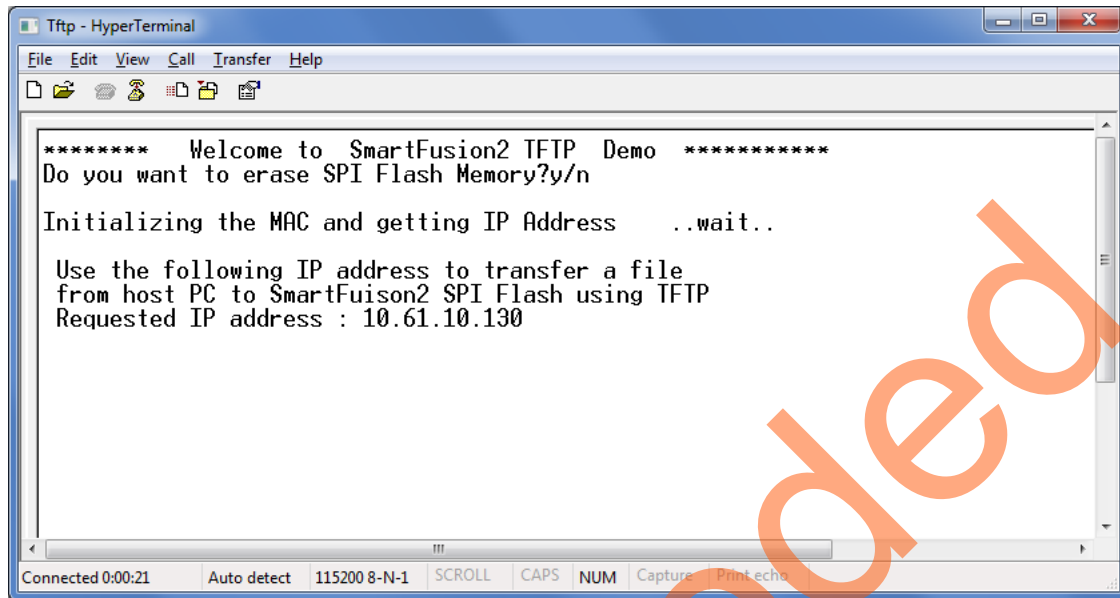


Figure 27 • HyperTerminal with IP Address

7. Open the command prompt in the host PC and navigate to the directory, where the files to be transferred to the SPI FLASH are located:
`<download_folder>\SF2_Webserver_Tftp_TCP_Demo_DF\sample_files.`
8. Type the following tftp command to transfer the file to the tftp server (SmartFusion2 Device) as shown in [Figure 28](#).
`tftp -i < ip address> PUT <file name>`

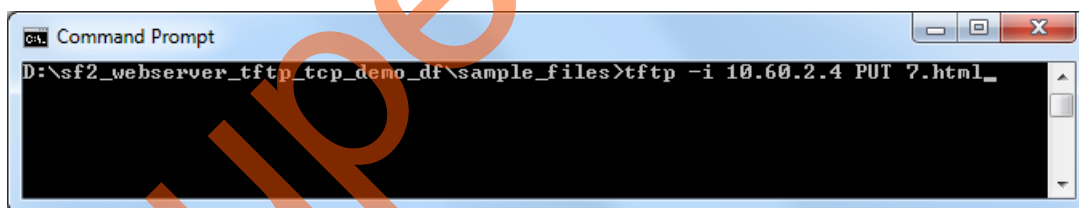


Figure 28 • Command Prompt

On successful file transfer from host PC to SmartFusion2 SPI-Flash, the command prompt window shows the transfer successful message as shown in [Figure 29](#).

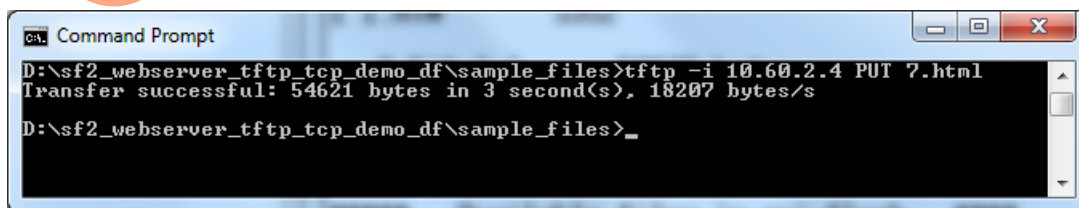


Figure 29 • Successful Transfer Message

HyperTerminal shows the available files in SPI flash as shown in Figure 30.

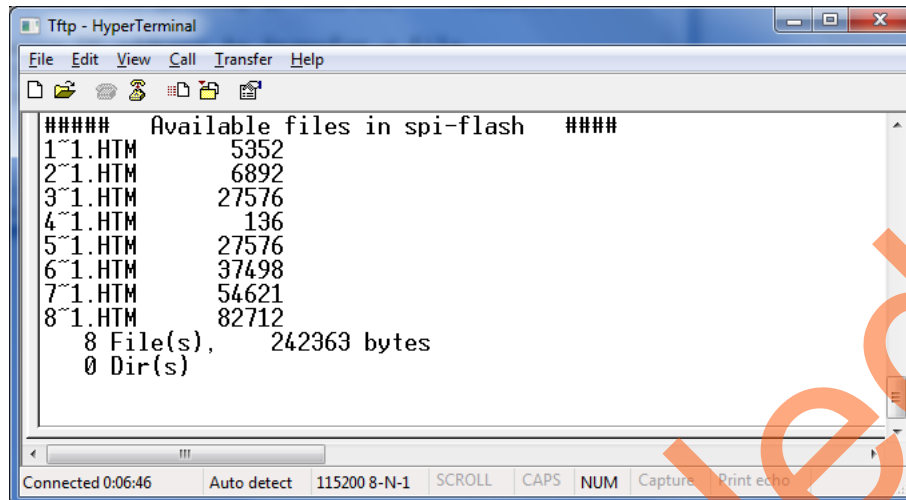


Figure 30 • HyperTerminal with Available SPI Flash Files

9. Repeat [Step 7](#). and [Step 8](#). if another file is required to be transferred to the SmartFusion2 SPI-Flash from host PC.
10. After running the demo, close the HyperTerminal.

Appendix 1: Board Setup for Running the Demo

Figure 31 shows the board setup for running the demo on the SmartFusion2 Advanced Development Kit Board.

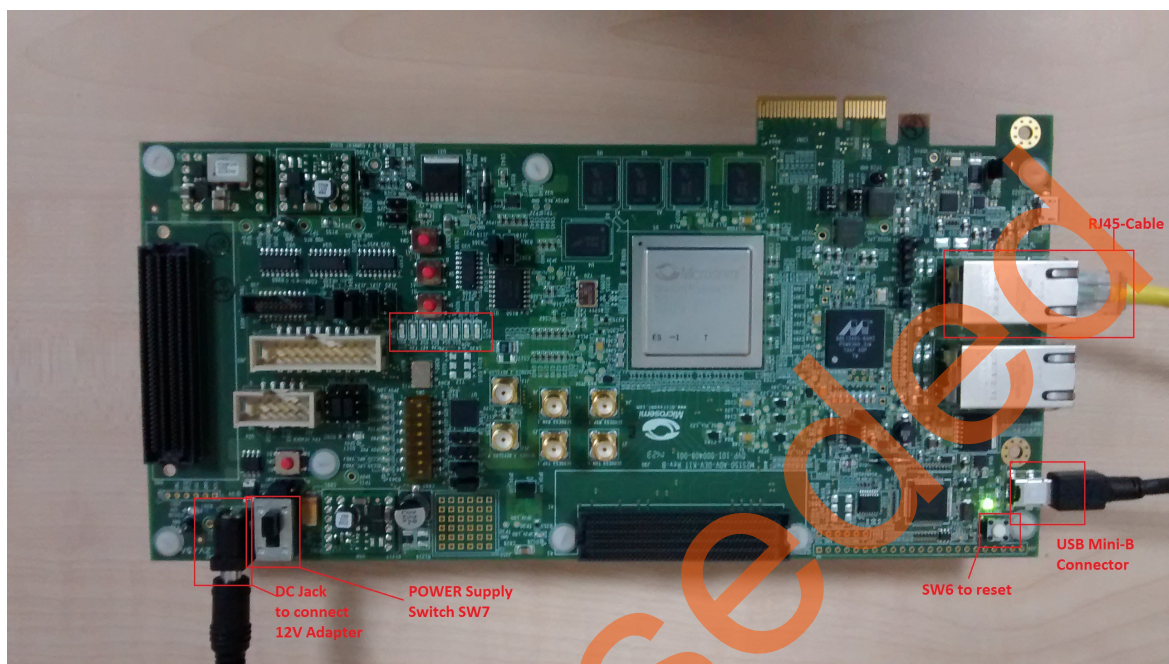


Figure 31 • SmartFusion2 Advanced Development Kit Setup

Appendix 2: Jumper Locations

Figure 32 shows the jumper locations in the SmartFusion2 Advanced Development Kit Board.

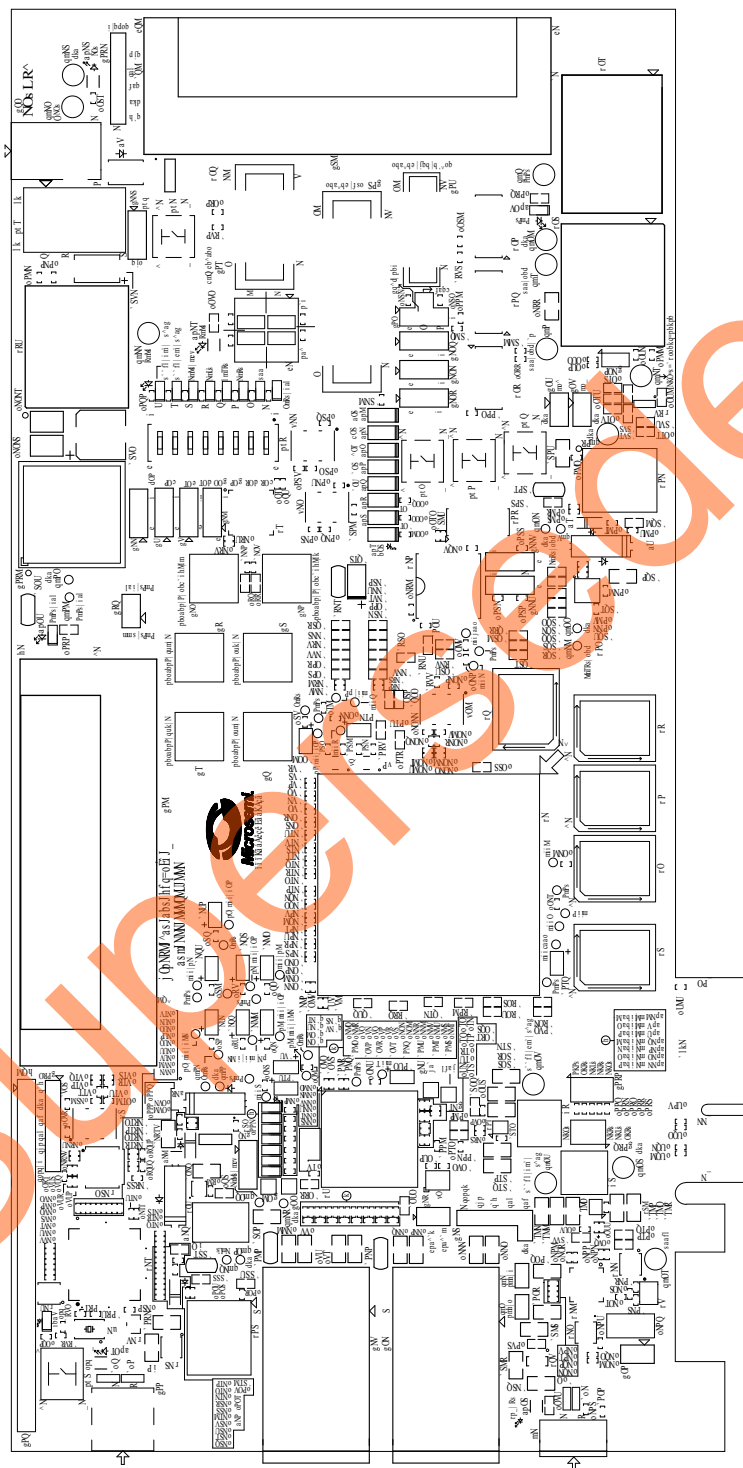


Figure 32 • SmartFusion2 Advanced Development Kit Silkscreen Top View

Note:

- Jumpers highlighted in red are set by default.
- Jumpers highlighted in green must be set manually.
- The location of the jumpers in [Figure 32](#) are searchable.

Appendix 3: Running the Design in Static IP Mode

1. To run the Webserver design in Static IP mode, right-click the Webserver_TCP_MSS_CM3_app project and select **Properties** as shown in [Figure 33](#).

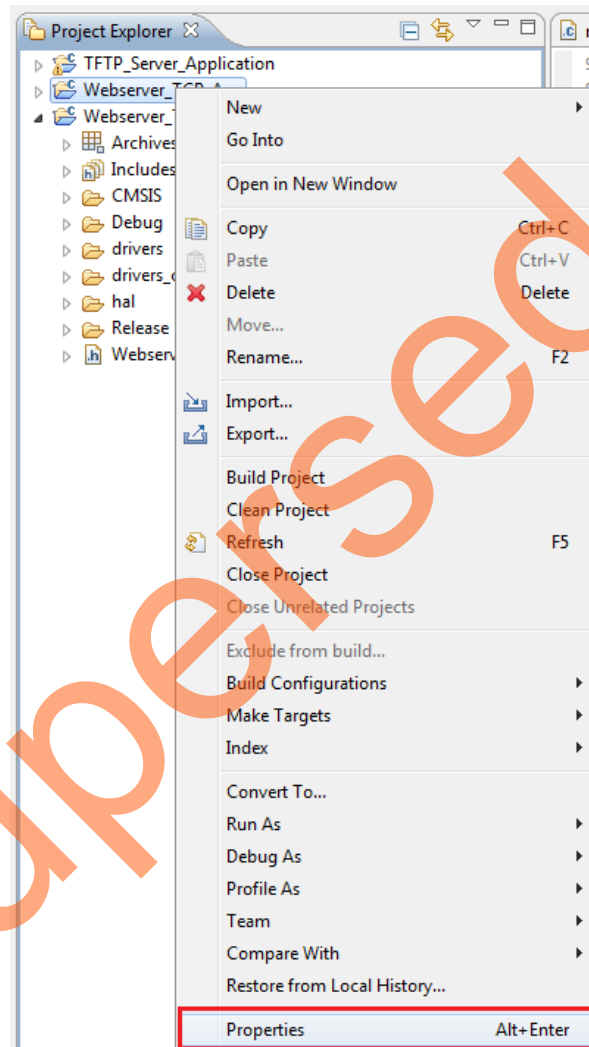


Figure 33 • Project Explorer Window of SoftConsole Project

2. Remove the symbol **NET_USE_DHCP** in **Tool Settings** of the **Properties for Webserver_TCP_MSS_CM3_app** window, as shown in [Figure 34](#).

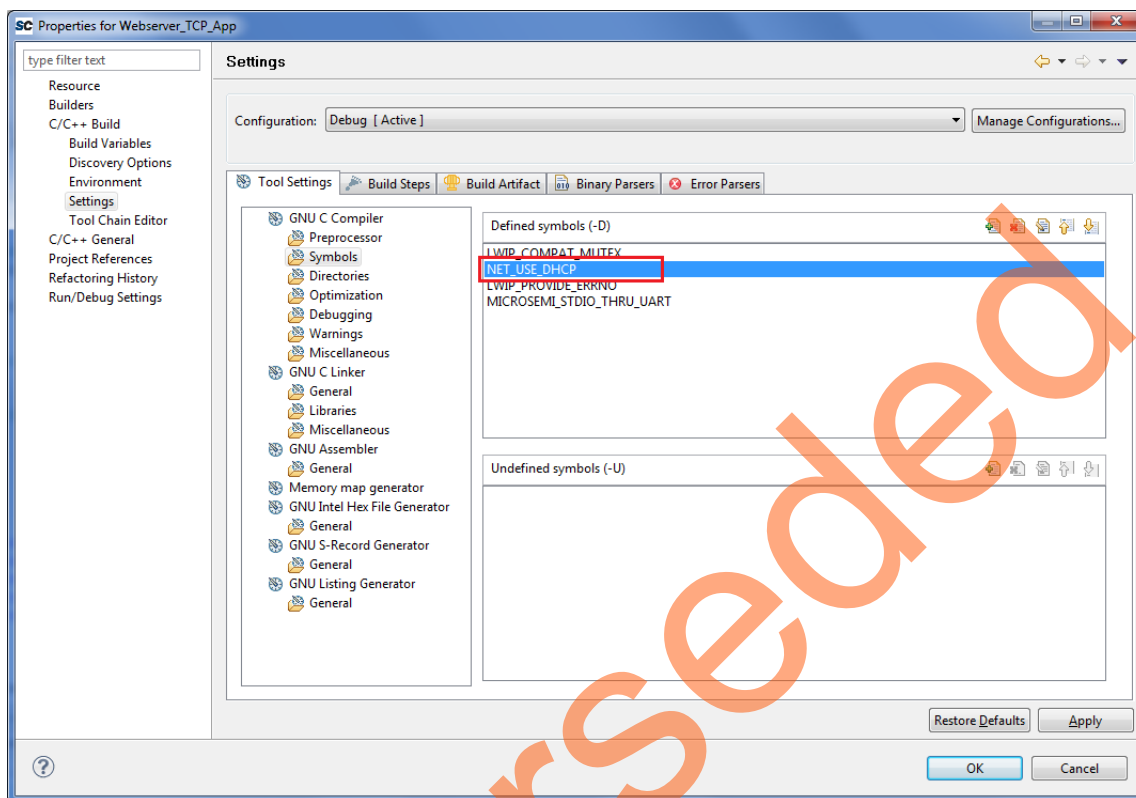


Figure 34 • Webserver_TCP_MSS_CM3_app Properties Window

Note: To run the TFTP server design in static IP mode remove the symbol **NET_USE_DHCP** in the Properties window of **TFTP_Server_app**, as described in [Step 1.](#) and [Step 2.](#)

If the device is connected in Static IP mode, the board static IP address is 169.254.1.23, then change the host TCP/IP settings to reflect the IP address. [Figure 35](#) shows Host PC TCP/IP settings.

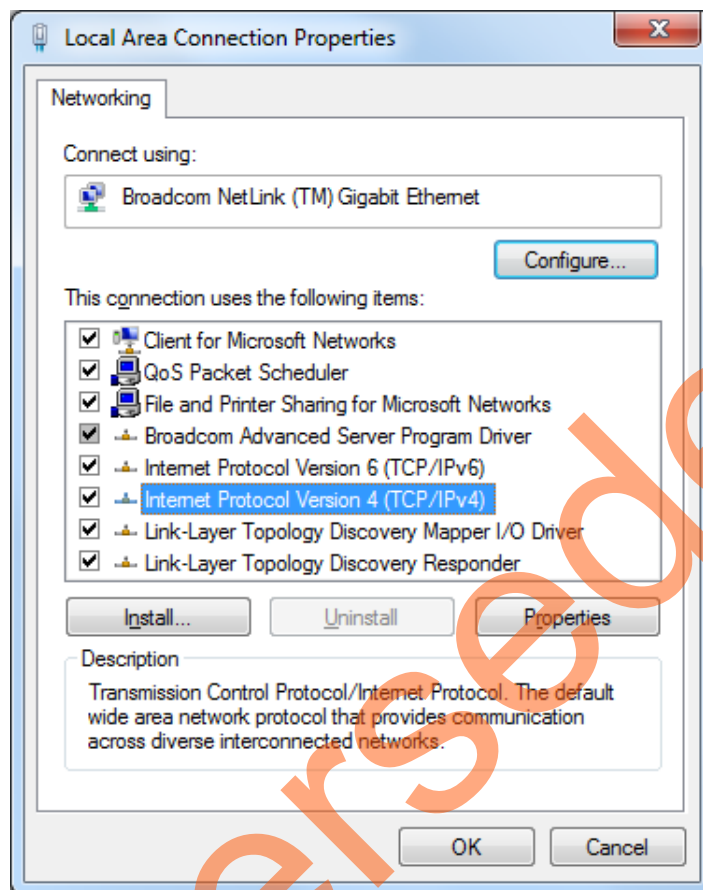


Figure 35 • Host PC TCP/IP Settings

Figure 36 shows Static IP address settings.

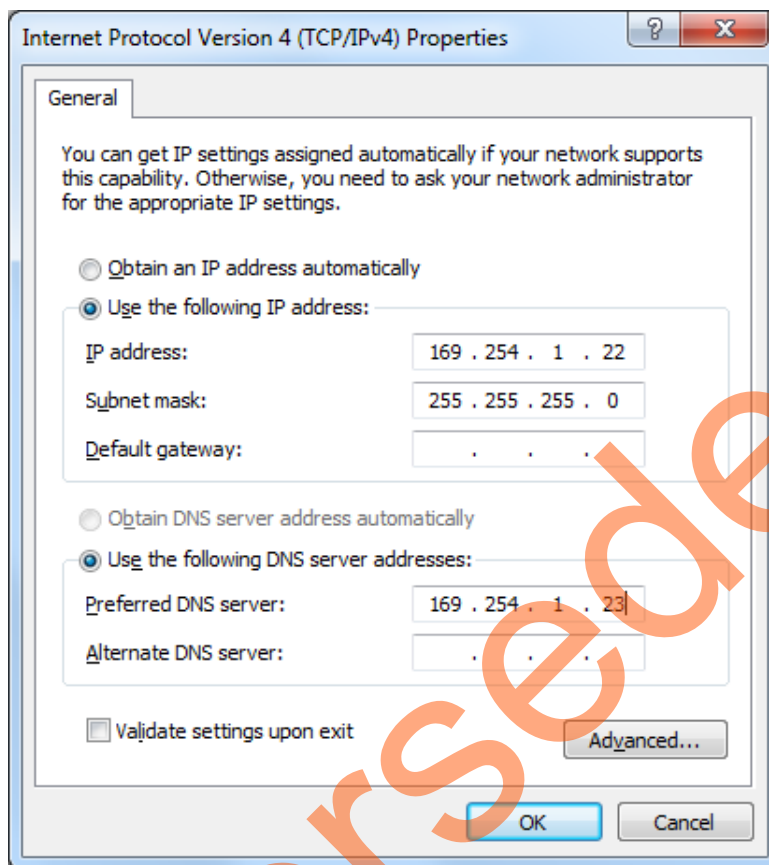


Figure 36 • Static IP Address Settings

Once these settings are made, compile the design, load the design into memory, and run the design using the SoftConsole.

Appendix 4: Running the SoftConsole Project in Debug Mode

1. Select **Debug Configurations** from **Run** menu of the SoftConsole. The **Debug Configurations** dialog box is displayed.
2. To debug TFTP_Server_app project, select **TFTP_Server_app Debug** as shown in Figure 37.

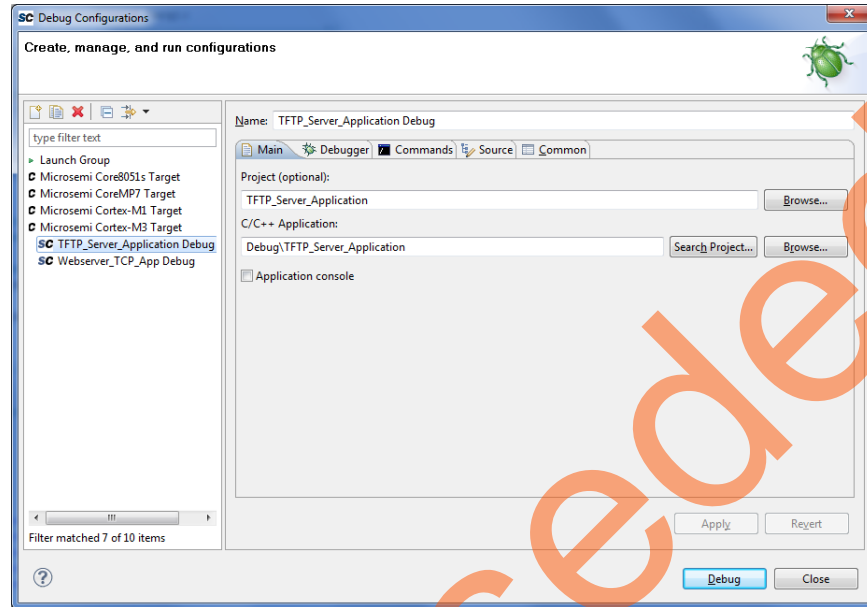


Figure 37 • Debug Configurations for TFTP_Server_app

3. To debug Webserver_TCP_MSS_CM3_app project, select **Webserver_TCP_MSS_CM3_app Debug** as shown in Figure 38.

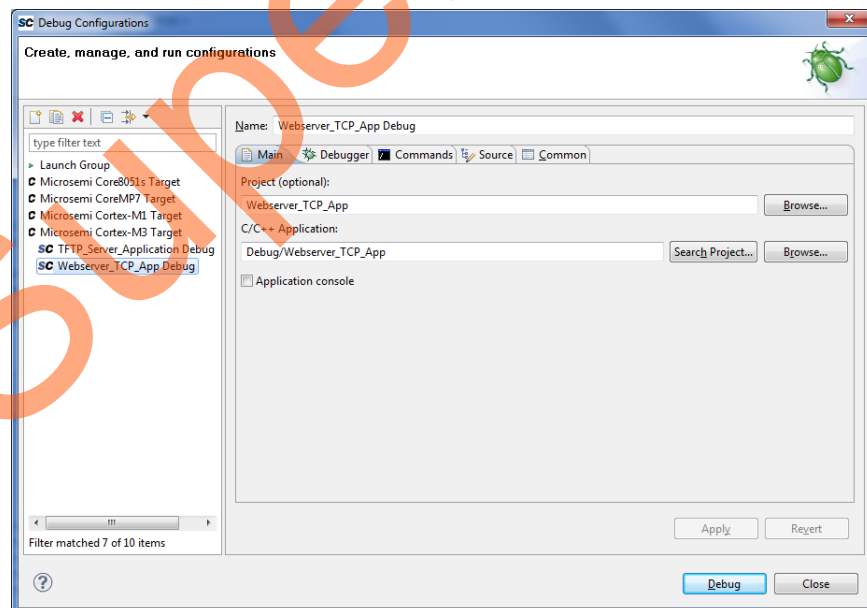


Figure 38 • Debug Configurations for Webserver_TCP_MSS_CM3_app

4. After selecting the target click **Debug**.

A – List of Changes

The following table lists critical changes that were made in each revision of the chapter in the demo guide.

Date	Changes	Page
Revision 3 (September 2014)	Updated the document for Libero v11.4 software release details (SAR 60795).	NA
	Updated the document for SmartFusion2 Advanced Development Kit Board details (SAR 60795).	NA
Revision 2 (March 2014)	Updated the document to include TFTP server (SAR 55038).	NA
Revision 1 (December 2013)	Updated the document for Libero v11.2 software release (SAR 53219).	NA
Revision 0 (October 2013)	Initial Release	NA

B – Product Support

Microsemi SoC Products Group backs its products with various support services, including Customer Service, Customer Technical Support Center, a website, electronic mail, and worldwide sales offices. This appendix contains information about contacting Microsemi SoC Products Group and using these support services.

Customer Service

Contact Customer Service for non-technical product support, such as product pricing, product upgrades, update information, order status, and authorization.

From North America, call 800.262.1060

From the rest of the world, call 650.318.4460

Fax, from anywhere in the world, 408.643.6913

Customer Technical Support Center

Microsemi SoC Products Group staffs its Customer Technical Support Center with highly skilled engineers who can help answer your hardware, software, and design questions about Microsemi SoC Products. The Customer Technical Support Center spends a great deal of time creating application notes, answers to common design cycle questions, documentation of known issues, and various FAQs. So, before you contact us, please visit our online resources. It is very likely we have already answered your questions.

Technical Support

Visit the Customer Support website (www.microsemi.com/soc/support/search/default.aspx) for more information and support. Many answers available on the searchable web resource include diagrams, illustrations, and links to other resources on the website.

Website

You can browse a variety of technical and non-technical information on the SoC home page, at www.microsemi.com/soc.

Contacting the Customer Technical Support Center

Highly skilled engineers staff the Technical Support Center. The Technical Support Center can be contacted by email or through the Microsemi SoC Products Group website.

Email

You can communicate your technical questions to our email address and receive answers back by email, fax, or phone. Also, if you have design problems, you can email your design files to receive assistance. We constantly monitor the email account throughout the day. When sending your request to us, please be sure to include your full name, company name, and your contact information for efficient processing of your request.

The technical support email address is soc_tech@microsemi.com.

My Cases

Microsemi SoC Products Group customers may submit and track technical cases online by going to [My Cases](#).

Outside the U.S.

Customers needing assistance outside the US time zones can either contact technical support via email (soc_tech@microsemi.com) or contact a local sales office. [Sales office listings](#) can be found at www.microsemi.com/soc/company/contact/default.aspx.

ITAR Technical Support

For technical support on RH and RT FPGAs that are regulated by International Traffic in Arms Regulations (ITAR), contact us via soc_tech_itar@microsemi.com. Alternatively, within [My Cases](#), select **Yes** in the ITAR drop-down list. For a complete list of ITAR-regulated Microsemi FPGAs, visit the [ITAR](#) web page.

Superseded

Superseded



Microsemi®

Microsemi Corporate Headquarters
One Enterprise, Aliso Viejo CA 92656 USA
Within the USA: +1 (800) 713-4113
Outside the USA: +1 (949) 380-6100
Sales: +1 (949) 380-6136
Fax: +1 (949) 215-4996
E-mail: sales.support@microsemi.com

Microsemi Corporation (Nasdaq: MSCC) offers a comprehensive portfolio of semiconductor and system solutions for communications, defense and security, aerospace, and industrial markets. Products include high-performance and radiation-hardened analog mixed-signal integrated circuits, FPGAs, SoCs, and ASICs; power management products; timing and synchronization devices and precise time solutions, setting the world's standard for time; voice processing devices; RF solutions; discrete components; security technologies and scalable anti-tamper products; Power-over-Ethernet ICs and midspans; as well as custom design capabilities and services. Microsemi is headquartered in Aliso Viejo, Calif. and has approximately 3,400 employees globally. Learn more at www.microsemi.com.

© 2014 Microsemi Corporation. All rights reserved. Microsemi and the Microsemi logo are trademarks of Microsemi Corporation. All other trademarks and service marks are the property of their respective owners.