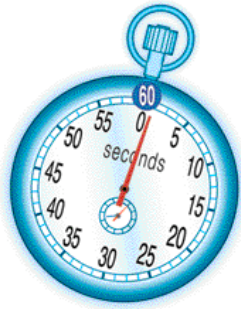


Perfect Timing. It's Our Business.



Testing Results

Certification: Leap Second Testing

Model Name: bc635 PCI U

Date Tested: November 5th, 2005

Leap Second tested product from Symmetricom provides Time of Year information across the boundary between December 31, 2005, and January 1, 2006. This includes, but is not limited to, handling of the Time information provided via integrated displays and output ports.

Symmetricom products that report time information will do so as described below.

Simulation Start Time: December 31st, 2005 at 23:15:00 (test run time 1 hour)

Expected Results: The system time, and all of its related outputs, should increment time monotonically except for the following discontinuity, which is expected:

1. December 31st, 2005 23:59:59
2. December 31st, 2005 23:59:60 (some clocks may display a repeated value of 59 sec)
3. January 1st, 2006 00:00:00

Actual results on IRIG output port when set to, Generator or IRIG B sync:

365:23:59:58

365:23:59:59

365:23:59:60

001:00:00:00

001:00:00:01

Symmetricom is not responsible for the correct processing of this information by any external program or device, only the transition from the year 2005 to the year 2006 as provided by integrated displays and output ports.

Symmetricom, Inc., is making every effort to provide accurate and up-to-date information on the Leap Second readiness of its products. This information reflects the current results of compliance tests of standard products and may be updated or changed without notice as testing continues. This information is published for your assistance only. An overall assessment and plan based on your particular needs is your responsibility. Symmetricom disclaims any implied warranties of merchantability and fitness for a particular purpose and makes no express warranties except as may be stated in its written agreement with its customers. In no event is Symmetricom liable to anyone for any indirect, special, or consequential damages. Liability is limited to the purchase price of the product.