

Sentinel Network™

Prognostics & Health Management Analysis Platform

Features

- Remote monitoring
- Network management
- Real-time monitoring
- Customized thresholds
- Prediction
- Zero downtime
- Troubleshooting

Description

Sentinel Network is a web application that combines network monitoring and prognostic health management (PHM) technologies. The main feature of Sentinel Network is its ability to predict the remaining useful life of network assets such as power supply devices (UPS) and battery backups. This reduces network downtime by permitting condition-based maintenance of these critical assets prior to catastrophic failure.

Sentinel Network's network monitoring technology includes network discovery, IT asset inventory, and real-time device health monitoring.

A baseline network configuration is committed to the Sentinel Network database after initial network discovery. An SNMP agent is used to retrieve WMI data from IT devices. A built-in troubleshooter will resolve switch configuration management issues. The application also generates three types of alerts, which are sent via email to notify network administrators about events in the network.

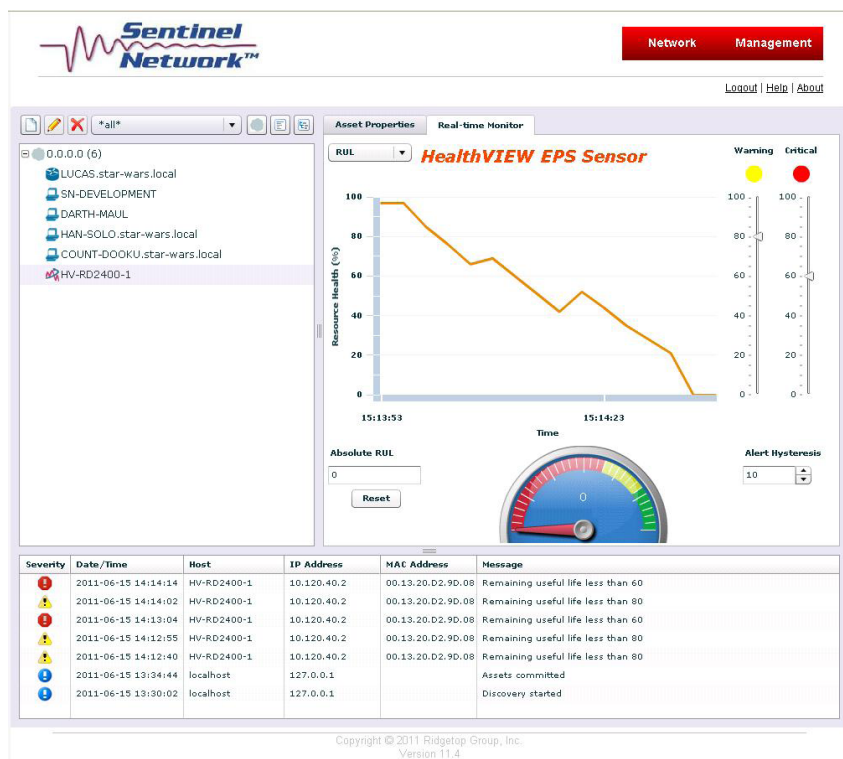


Figure 1: Sentinel Network prognostic HealthVIEW™, showing remaining useful life

Features & Benefits

Sentinel Network comprises different features that enable users to proactively manage their network.

The discovery features allow users to be aware of the assets connected or disconnected from the network. This allows a better inventory of the network devices. Sentinel Network also includes two types of monitoring: Lightweight and Full. These features permit the user to monitor events occurring in the network.

Sentinel Network offers several benefits for companies to help reduce costs. The main feature of Sentinel Network is prognostics, which helps to:

- Reduce maintenance cost
- Minimize downtime cost
- Enable efficient maintenance planning



Figure 2: Sentinel Network rack-mountable unit

BENEFITS

Remote monitoring	A web application that can be accessed remotely from any computer on the local network or through the internet.
Network management	Offers a more efficient and effective way to manage your network.
Real-time monitoring	Graph representation of IT devices' performance, such as CPU, memory, hard drive and more.
Customized thresholds	Allows users to establish thresholds to monitor network devices' state of health.
Prediction	The only network monitoring software that offers prognostics and health management (PHM). The application uses a complex algorithm to predict the remaining useful life of power supplies (or UPS battery backup) within a network.
Zero downtime	Network discovery, network configuration monitoring, WMI and registry monitoring, etc. Generate three classes of alerts: critical, warning, and informational. The administrator specifies the content of the email alert to include relevant location and fault information.
Troubleshooting	Ability to perform troubleshooting actions for switches.

Corporate Headquarters

3580 West Ina Road
Tucson, Arizona 85741 USA
OFFICE +1 520 742 3300
SALES@RIDGETOPGROUP.COM

Worldwide Locations

Support and sales locations for Ridgetop Group Inc. exist in Germany, Belgium, Japan, China, Canada, and the United States.
For office locations and contact information, please call the corporate headquarters or visit us on the web: www.ridgetopgroup.com