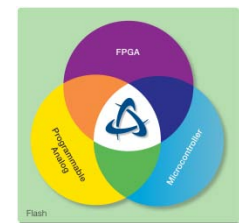


# Linux on Microsemi SmartFusion

The benefits of embedded Linux are now available to SmartFusion™ developers. The unique features of SmartFusion combined with the flexibility of U-Boot and Linux open up a new horizon of possibilities for embedded developers.

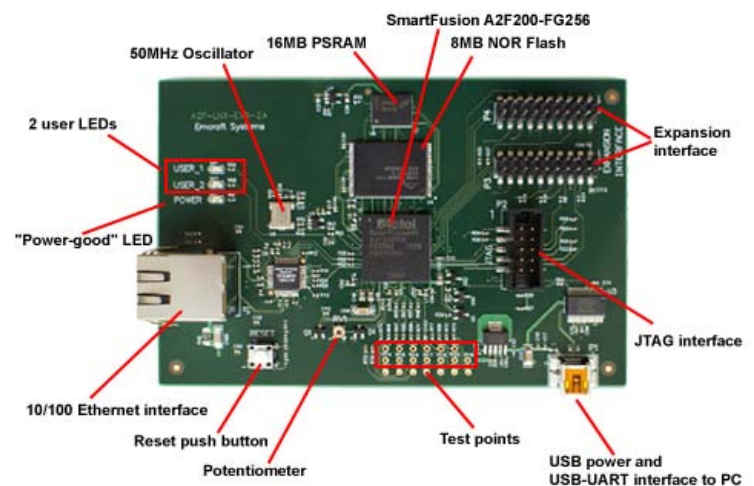
- uClinux™ kernel 2.6.30
- U-Boot firmware
- Full networking support (NFS, telnet, FTP, NTP, etc.)
- Web server
- SSH server
- ... and a vast array of other standard Linux protocol stacks and applications.

SmartFusion intelligent mixed signal FPGAs are the only devices that integrate an FPGA, ARM® Cortex™-M3 and programmable analog, offering full customization, IP protection and ease-of-use. Based on Microsemi's proprietary flash process, SmartFusion FPGAs are ideal for hardware and embedded designers who need a true system-on-chip (SoC) solution that gives more flexibility than traditional fixed-function microcontrollers—without the excessive cost of soft processor cores on traditional FPGAs.



You can get your copy of Linux for SmartFusion by purchasing the A2F Linux Evaluation Kit available from Emcraft Systems. The kit includes everything you need to start your development with Linux on SmartFusion:

- A2F-LNX-EVB board pre-programmed with U-Boot and Linux
- A2F-Linux software development environment, including:
  - Full source code of uClinux kernel ported to SmartFusion
  - Full source code of U-Boot ported to SmartFusion
  - Full source code of BusyBox and other target components
  - Linux-hosted cross-development environment
  - Several demo projects providing a way to jump-start your software development with A2F-Linux in a matter of minutes.



To purchase the A2F Linux Evaluation Kit, go to <http://linux.emcraft.com>. As of March 1, 2011 the evaluation kit sells at the **introductory price of \$119**. Only a limited number of units are left available at this price. Once they are sold out, the price for the next batch will be higher.

Linux for SmartFusion is provided by Emcraft Systems, an expert company that specializes in Linux-based solutions for embedded applications. Since 2002, Emcraft has helped its partners develop and deploy over 20 embedded products that have shipped throughout the world in tens of thousands of units.