

SmartFusion2 SoC FPGA - eNVM Initialization - Libero SoC v11.7

Table of Contents

Purpose	1
Introduction	1
References	2
Design Requirements	2
Initializing eNVM Using the Libero eNVM Client	3
Initializing eNVM Using the Cortex-M3 Processor	5
Design Description	5
Hardware Implementation	5
Software Implementation	7
Setting Up the Design	9
Running the Design	10
Conclusion	13
Appendix A: Design Files	13
Appendix B: eNVM Driver APIs	14
write_nvmm()	14
MSS_NVMM_read()	15
verify_nvmm()	16
List of Changes	17

Purpose

This application note describes the different methods to initialize the embedded non-volatile memory (eNVM) in the SmartFusion[®]2 system-on-chip (SoC) field programmable gate array (FPGA) devices.

Introduction

The SmartFusion2 devices have a maximum of two on-chip 256 KB eNVM flash memories. The eNVM is used to store the application code image or used to store data, which can be used by the end application. The eNVM can be initialized by one of the following methods:

- Using the eNVM client of the eNVM configurator in Libero[®] System-on-Chip (SoC)
- Writing into the eNVM using ARM[®] Cortex[®]-M3 processor
- In-application programming (IAP)
- Writing into the eNVM using custom logic in the FPGA fabric

Refer to the [AC429: SmartFusion2 and IGLOO2 - Accessing eNVM and eSRAM from FPGA Fabric Application Note](#), for information on how to initialize the eNVM using the eNVM client in the Libero SoC and the Cortex-M3 processor.

Refer to the "eNVM" chapter in [UG0331: SmartFusion2 Microcontroller Subsystem User Guide](#) for detailed description of eNVM.

References

The list of references used are:

- [UG0331: SmartFusion2 Microcontroller Subsystem User Guide](#)
- [SmartFusion2 System Builder User Guide](#)

Design Requirements

Table 1 • Design Requirements

Design Requirements	Description
Hardware Requirements	
SmartFusion2 Security Evaluation Kit: <ul style="list-style-type: none"> • 12 V adapter • FlashPro4 programmer • USB A to Mini-B cable 	Rev D or later
Host PC or Laptop	Windows 64-bit Operating System
Software Requirements	
Libero SoC for viewing the design files <ul style="list-style-type: none"> • FlashPro Programming Software 	v11.7
SoftConsole	v3.4 SP1*
Host PC Drivers	USB to UART drivers
<i>Note: *For this application, SoftConsole v3.4 SP1 is used. For using SoftConsole v4.0, see the TU0546: SoftConsole v4.0 and Libero SoC v11.7 Tutorial.</i>	

Initializing eNVM Using the Libero eNVM Client

The Libero eNVM client creates the necessary programming information that FlashPro uses to initialize the eNVM during the programming. The following steps describe how to generate a programming file using the eNVM client:

1. In the SmartFusion2 Libero project, double-click **ENVM_INIT_M3_0** in the Libero **SmartDesign** window to open the System Builder Configuration window.
2. Go to **Memories** tab to open the **ENVM** window.
3. Select **Data Storage** under **Available Client types** and click **Add to System**, as shown in Figure 1.

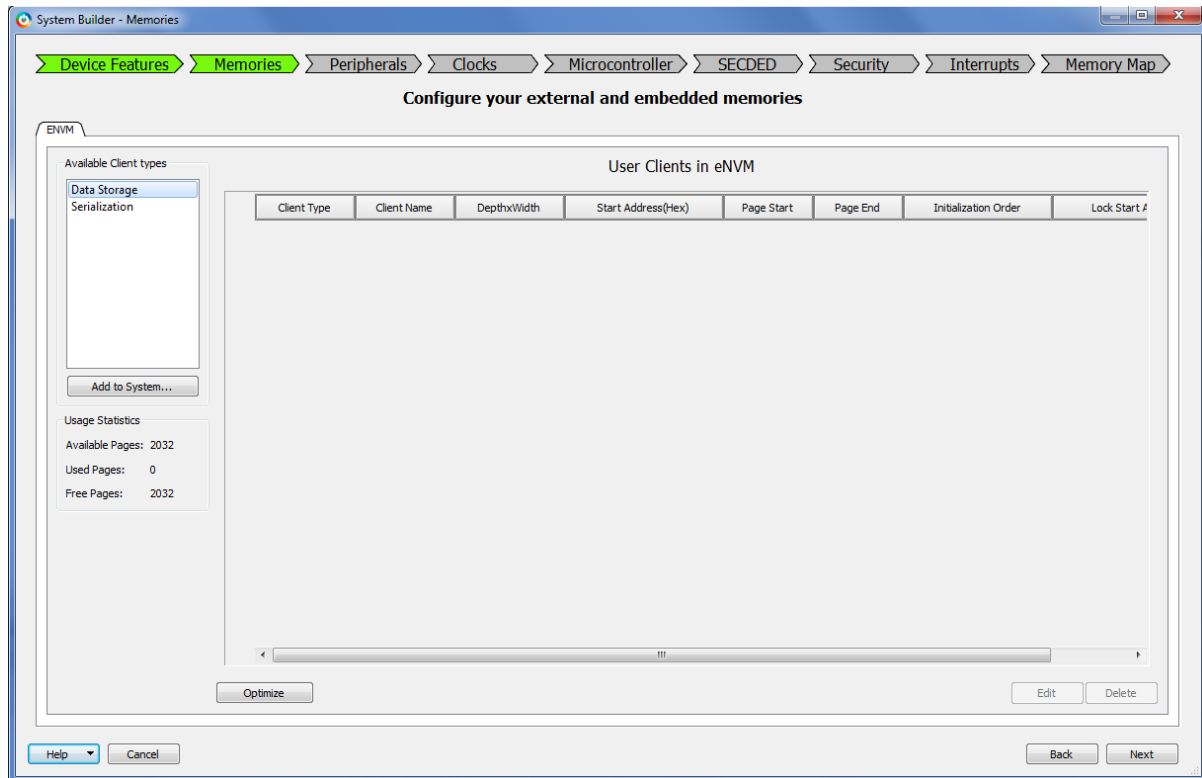


Figure 1 • Adding the Client Type

The **Add Data Storage Client** window is displayed, as shown in Figure 2 on page 4. It supports the following types of memory file formats:

- Intel-Hex
 - Motorola-S
 - Microsemi-Hex
 - Microsemi-Binary
4. Create the memory file in any one of the above formats with your code or data. You can create the memory file for your code using the SoftConsole v3.4 SP1 with the linker script `production-smartfusion2-execute-in-place.ld`.

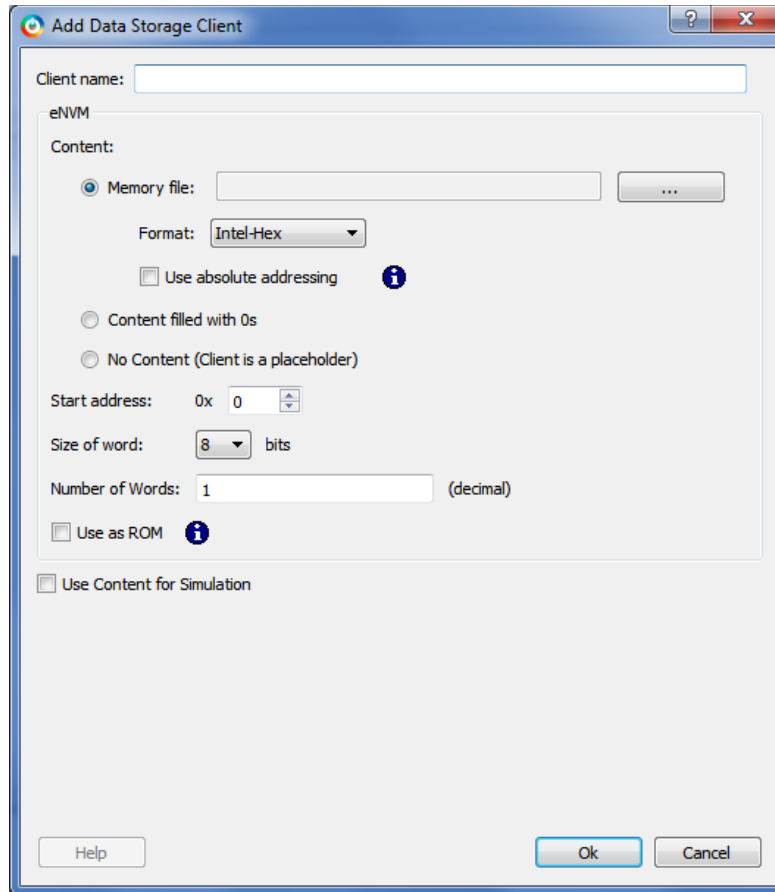


Figure 2 • Add Data Storage Client

5. Enter the **Client name**.
6. Browse to the created **Memory file** and click **OK** to add the eNVM client.
The Modify core - ENVM window (displayed next) shows the client and its size. You can also add more than one client with the different start address.
7. After adding the eNVM clients, click **Next** and **Generate System Builder Component**.
8. Save and generate the SmartDesign in Libero SoC using the **Generate Component**.
9. Double-click the **Run Program Action** in the Libero **Design Flow** window to program the SmartFusion2 Security Evaluation Kit to initialize the eNVM with the memory file.

Initializing eNVM Using the Cortex-M3 Processor

The following sections describe how to initialize eNVM using the Cortex-M3 processor with an example design. The design example describes how to write, read, and verify the data to or from different locations within the eNVM using the Cortex-M3 processor.

Design Description

The design example included with this application note uses RC oscillator and fabric clock conditioning circuitry (FCCC) to generate the base clock to microcontroller subsystem (MSS) CCC. In the design example, the MSS CCC is configured to run the M3_CLK at 100 MHz, which drives the clock to Cortex-M3 processor. The MMUART_1 is routed for communicating with the serial terminal program. The design receives the given commands for read, write, and verify operations and corresponding address, length, and data through the serial terminal program. After completing every operation, it displays the status (success/fail) of operation on the serial terminal program.

Hardware Implementation

The hardware implementation involves configuring System Builder. [Figure 3](#) shows the top-level hardware design in SmartDesign.

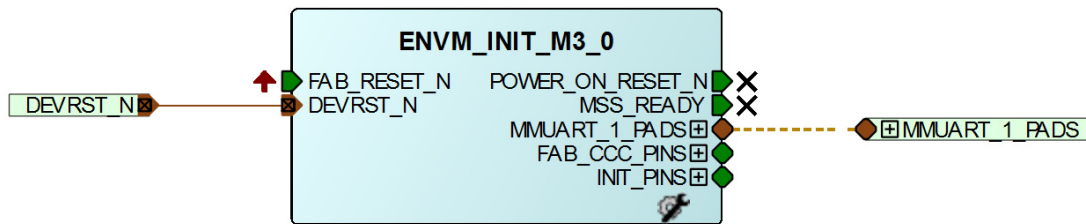


Figure 3 • Top-Level SmartDesign

The MSS_CCC clock source is sourced from the FCCC through the **On-Chip Oscillator**. The FCCC is configured to provide the 100 MHz clock using GL0. Figure 4 shows the system clocks configurations for the M3_CLK and APB_0_CLK clock settings.

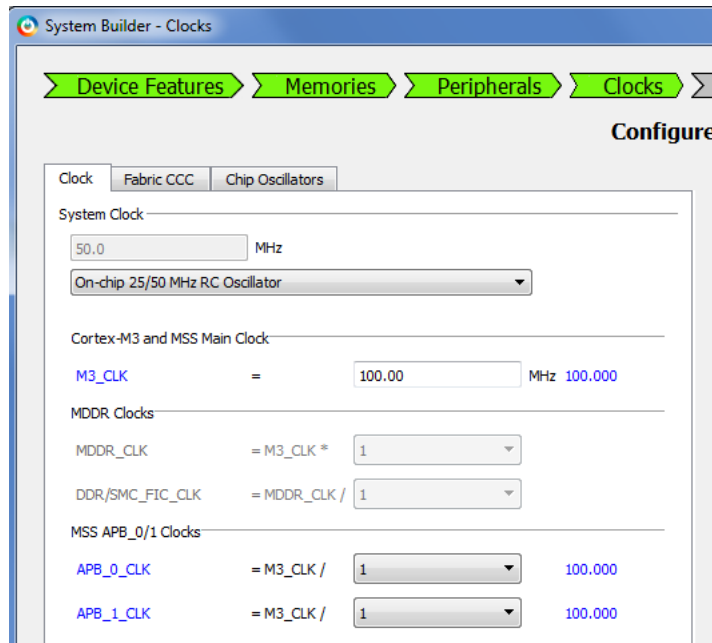


Figure 4 • Clock Configurations

The MMUART_1 is used for reading and writing to the HyperTerminal window. On the SmartFusion2 Security Evaluation Kit board, the MMUART_1 TX and RX are connected to the mini-B USB through I/Os. Figure 5 shows the MMUART_1 configuration.

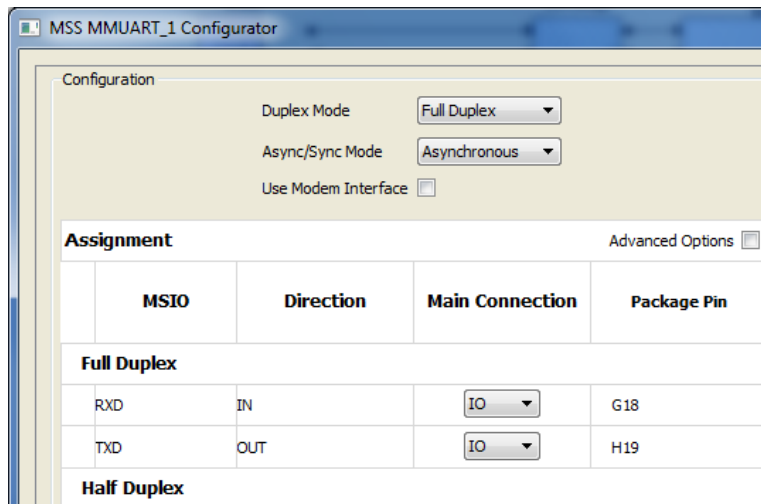


Figure 5 • MMUART_1 Configuration

Software Implementation

The software design example performs the write, read, and verify tasks on receiving commands from user through HyperTerminal. The design uses the SmartFusion2 MSS MMUART driver to communicate with the serial terminal program running on the host PC. The design implements APIs to read, write, and verify the data. The API implementation and usage are described in the following sections. Refer to "Appendix B: eNVM Driver APIs" on page 14, for the API code.

Write Operation

The design uses the **NVM_write()** API to write or program the data to eNVM over any memory range within the limits of 256 KB. This function supports programming data that spans across multiple pages. The following is the function prototype:

```
nvm_status_t
NVM_write
(
    uint32_t start_addr,
    const uint8_t * pidata,
    uint32_t length,
    uint32_t lock_page
);
```

The data is written from the memory location specified by the first parameter *start_addr*. This address is the relative address, which is added to the eNVM base address 0x60000000. The *pidata* parameter is the byte aligned starting address of the input data. The *length* parameter is the number of data bytes that are to be programmed. On successful execution, this function returns SUCCESS, otherwise it returns INVALID_PARAMETER.

Example:

```
uint8_t idata[815] = {"Z"};
nvm_status_t status = NVM_write( (0x0, idata, sizeof(idata), NVM_DO_NOT_LOCK_PAGE);
```

The **NVM_write()** API calls the **write_nvm()** API to perform the page write into eNVM after aligning the input data into pages. The **write_nvm()** API uses the eNVM controller's page-wise write command. It uses the following sequence to write or program the eNVM page:

1. Request the access to eNVM by writing the 0x1 to the controller register REQ_ACCESS of eNVM.
2. Poll to the REQ_ACCESS for 0x5 (Cortex-M3 processor access to eNVM is granted).
3. Fill the WDBUFFER with the data that needs to be written into eNVM.
4. To write the data to eNVM array, write the CMD control register with page program and the address of the page.
5. Poll for eNVM busy bit in the STATUS control register of eNVM for 1. The 0 for this bit indicates that eNVM is busy in programming the data to eNVM array. On programming, the eNVM controller makes busy bit to '0'.
6. Release the Cortex-M3 processor access to eNVM by writing 0x0 to the controller register REQ_ACCESS of eNVM.

The page program command programs the entire page with the data in the WDBUFFER.

Note: The eNVM frequency range (NV_FREQRNG field of ENVM_CR System Register) value must be set to the maximum value 15 to ensure the correct programming of the eNVM. After programming eNVM, restore the original frequency range value for eNVM read or verify operations.

Read Operation

The design uses the **MSS_NVM_read()** API to read the data from eNVM over any memory range within the limits of 256 KB. The following is the function prototype:

```
nvm_status_t
MSS_NVM_read
(
    uint8_t * addr,
    uint8_t * podata,
    uint32_t len
);
```

The data is read from the memory location specified by the first parameter *addr*. This address is the relative address which is added to the eNVM base address 0x60000000. The *addr* parameter is the byte aligned address of eNVM from which the data is read. The *podata* parameter is the byte aligned address of the output buffer in which the read data is stored. The *len* parameter is the number of data bytes that are to be read. On successful execution, this function returns SUCCESS, otherwise it returns INVALID_PARAMETER.

Example:

```
uint8_t outbuf[815] = {0};
nvm_status_t status = MSS_NVM_read( 0, outbuf, sizeof(outbuf) );
```

The read API reads the data from eNVM similar to that of reading from any other memory location because the eNVM controller supports RAM type of accessing for read operation. This API also checks for the 2-bit error while reading eNVM.

Verify Operation

The design uses the **NVM_verify** API to verify the eNVM memory against the reference data provided. This function supports verification that spans across multiple pages. The following is the function prototype:

```
nvm_status_t
NVM_verify
(
    uint32_t addr,
    const uint8_t * pidata,
    uint32_t length
);
```

The data is verified from the memory location specified by the first parameter *addr*. This address is the relative address which is added to the eNVM base address 0x60000000. The *addr* parameter is the byte aligned address of eNVM from which the data is to be verified. The *pidata* parameter is the byte aligned starting address of the reference input data against which the verification must be performed. The *length* parameter is the number of data bytes that are to be verified. On successful execution, this function returns SUCCESS, otherwise it returns INVALID_PARAMETER.

Example:

```
uint8_t idata[815] = {"Z"};
nvm_status_t status = NVM_write( 0x0, idata, sizeof(idata), NVM_DO_NOT_LOCK_PAGE);
status = NVM_verify( 0x0, idata, sizeof(idata) );
```


The **NVM_verify()** API calls the **verify_nvmm()** API to perform the page verify to eNVM after aligning the input data into pages. The **verify_nvmm()** API uses the eNVM controller's page-wise verify command. It uses the following sequence to verify the data in the eNVM page:

1. Request the access to eNVM by writing the 0x1 to the controller register REQ_ACCESS of eNVM.
2. Poll to the REQ_ACCESS for 0x5 (Cortex-M3 processor access to eNVM is granted).
3. Fill the WDBUFFER with the data to verify the data in the eNVM array.
4. To verify the data in the eNVM array, write the CMD control register verify page program and the address of the page.
5. Poll for eNVM busy bit in the STATUS control register of eNVM for 1. The 0 for this bit indicated eNVM is busy in programming the data to eNVM array. On programming, the eNVM controller makes busy bit to 0.
6. Check the bit[1] of STATUS register for 0 which indicates verify success. It is 1 in case of verify failure.
7. Release the Cortex-M3 processor access to eNVM by writing 0x0 to the controller register REQ_ACCESS of eNVM.

Setting Up the Design

Connect the following jumpers on the SmartFusion2 Security Evaluation Kit, as described in [Table 2](#). Switch OFF the power supply switch SW7 while connecting the jumpers.

Table 2 • SmartFusion2 Security Evaluation Kit Jumper Settings

Jumper	Pin (From)	Pin (To)	Comments
J22, J23, J24, J8, J3	1	2	These are the default jumper settings of the Security Evaluation Kit board. Ensure these jumpers are set accordingly.

Running the Design

The following steps describe how to run the design:

1. Connect the FlashPro4 programmer to the J5 connector of the SmartFusion2 Security Evaluation Kit.
2. Connect the J18 connector on the SmartFusion2 Security Evaluation Kit to the host PC using the USB mini-B cable. Ensure that the USB to UART bridge drivers are automatically detected by verifying the Device Manager, as shown in [Figure 6](#).

Note: Copy the COM port number for serial port configuration. Ensure that the COM port location is specified as **on USB Serial Converter D**, as shown in [Figure 6](#).

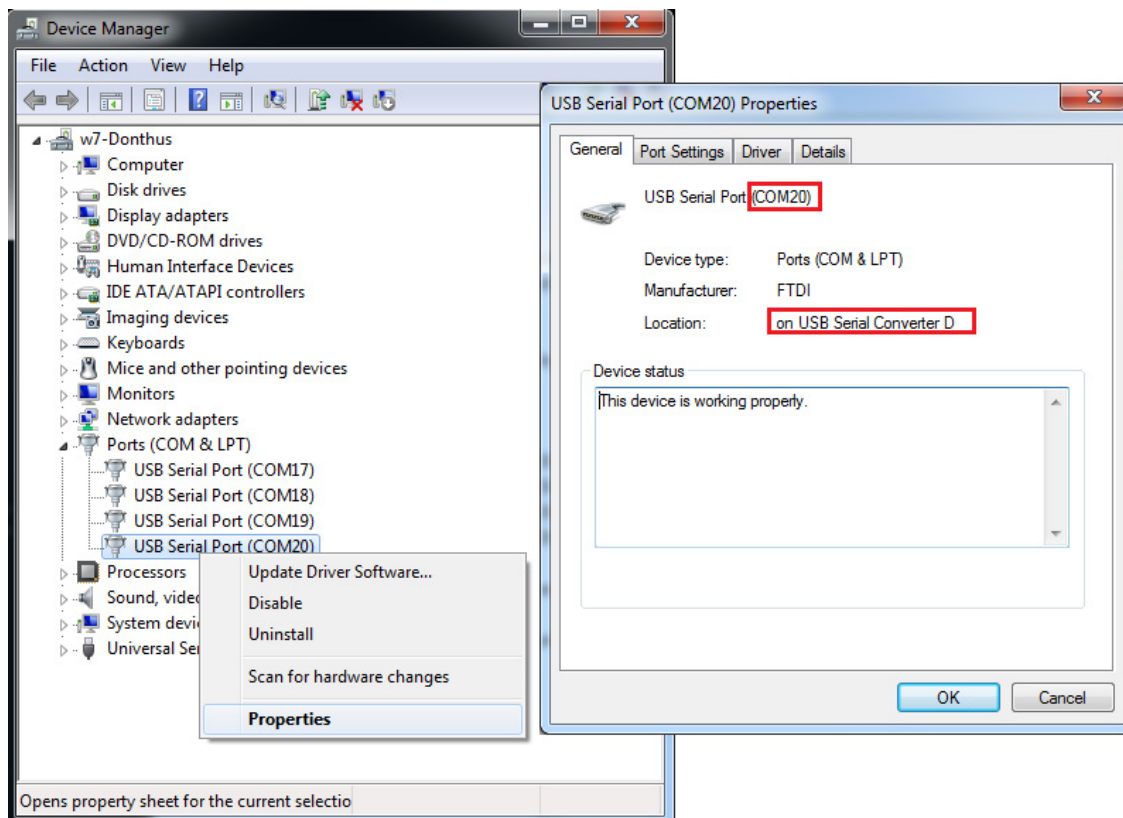


Figure 6 • USB to UART Bridge Drivers

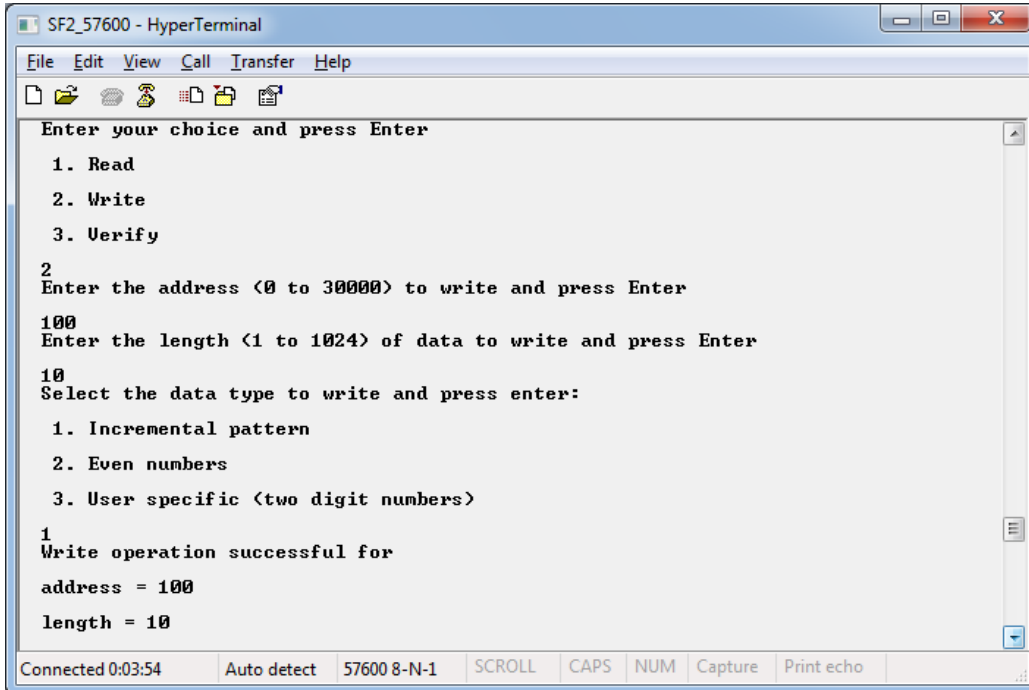
3. If USB to UART bridge drivers are not installed, download and install the drivers from www.microsemi.com/soc/documents/CDM_2.08.24_WHQL_Certified.zip.
4. Connect the power supply to the J6 connector and change the power supply switch SW7 to ON.
5. Program the SmartFusion2 Security Evaluation Kit board with the generated or provided *.stp file (refer to "Appendix A: Design Files" on page 13) using FlashPro.
6. Invoke the standalone SoftConsole v3.4 SP1 Integrated Design Environment (IDE).
7. Load the SoftConsole project from the provided design files.
8. Launch the debugger in SoftConsole.
9. Start a **HyperTerminal** with the baud rate set to 57600, 8 data bits, 1 stop bit, no parity, and no flow control.

If your PC does not have a HyperTerminal program, use any free serial terminal emulation program such as PuTTY or TeraTerm. Refer to the [Configuring Serial Terminal Emulation Programs Tutorial](#), for configuring HyperTerminal, TeraTerm, and PuTTY.

When you run the debugger in SoftConsole, the HyperTerminal window shows a message to enter your choice.

10. Enter the choice to write. It prompts for address, length, and data consequently. Enter the values, as shown in [Figure 7](#).

On writing, the message **write operation successful** is displayed.

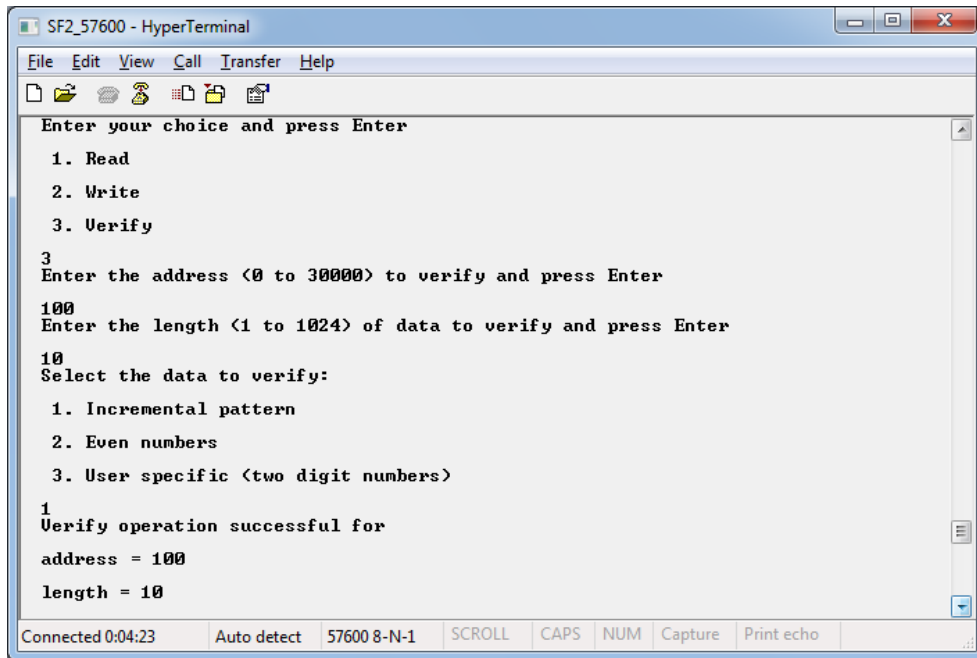


```
Enter your choice and press Enter
1. Read
2. Write
3. Verify
2
Enter the address <0 to 30000> to write and press Enter
100
Enter the length <1 to 1024> of data to write and press Enter
10
Select the data type to write and press enter:
1. Incremental pattern
2. Even numbers
3. User specific <two digit numbers>
1
Write operation successful for
address = 100
length = 10
```

Figure 7 • Write Operation

11. Enter the choice to verify. It prompts for address, length, and data consequently. Enter the values, as shown in [Figure 8](#).

On writing, the message **verify operation successful** is displayed.

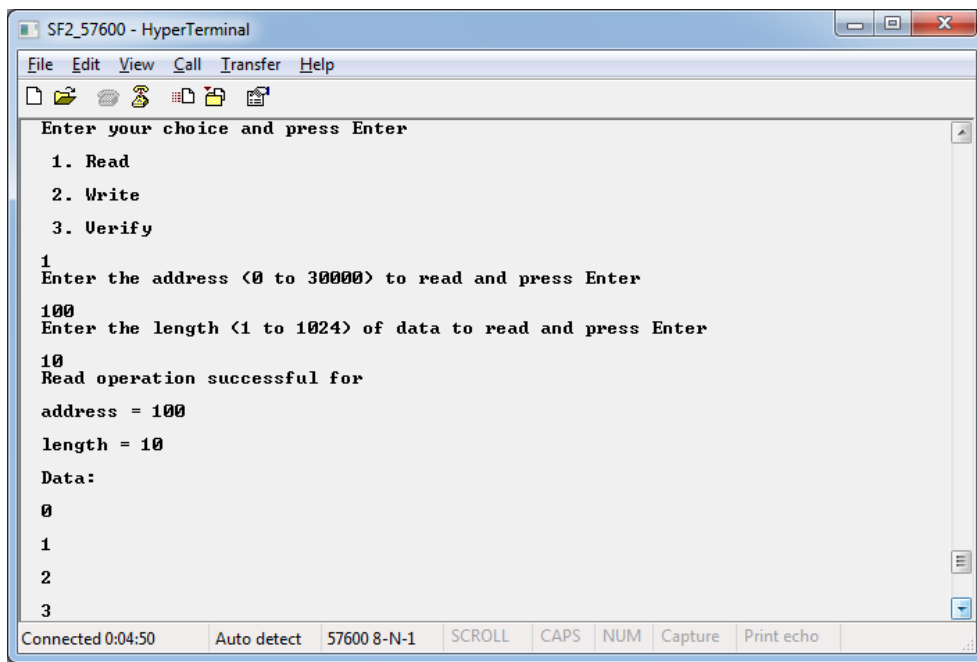


```
SF2_57600 - HyperTerminal
File Edit View Call Transfer Help
Enter your choice and press Enter
1. Read
2. Write
3. Verify
3
Enter the address <0 to 30000> to verify and press Enter
100
Enter the length <1 to 1024> of data to verify and press Enter
10
Select the data to verify:
1. Incremental pattern
2. Even numbers
3. User specific <two digit numbers>
1
Verify operation successful for
address = 100
length = 10
Connected 0:04:23 Auto detect 57600 8-N-1 SCROLL CAPS NUM Capture Print echo
```

Figure 8 • Verify Operation

12. Enter the choice to read. It prompts for address and length consequently. Enter the values as shown in [Figure 9](#).

On reading, the read values are displayed.



```
SF2_57600 - HyperTerminal
File Edit View Call Transfer Help
Enter your choice and press Enter
1. Read
2. Write
3. Verify
1
Enter the address <0 to 30000> to read and press Enter
100
Enter the length <1 to 1024> of data to read and press Enter
10
Read operation successful for
address = 100
length = 10
Data:
0
1
2
3
Connected 0:04:50 Auto detect 57600 8-N-1 SCROLL CAPS NUM Capture Print echo
```

Figure 9 • Read Operation

Conclusion

This application note describes how to initialize eNVM using the eNVM client of the eNVM configurator in the Libero SoC and using the Cortex-M3 processor.

Appendix A: Design Files

You can download the design files from the Microsemi® SoC Products Group website:
http://soc.microsemi.com/download/rsc/?f=m2s_ac391_envm_init_liberov11p7_df

The design file contains Libero Verilog, SoftConsole software project, and programming files (*.stp) for the SmartFusion2 Security Evaluation Kit. Refer to the `Readme.txt` file included in the design file for the directory structure and description.

Appendix B: eNVM Driver APIs

write_nvm()

```

static uint32_t
write_nvm
(
    uint32_t addr,
    const uint8_t * pidata,
    uint32_t length,
    uint32_t lock_page,
    uint32_t * p_status
)
{
    uint32_t length_written;
    uint32_t offset;

    *p_status = 0u;

    offset = addr & NVM_OFFSET_SIGNIFICANT_BITS; /* Ignore remapping. */

    ASSERT(offset <= NVM1_TOP_OFFSET);

    /* Adjust length to fit within one page. */
    length_written = get_remaining_page_length(offset, length);

    if(offset <= NVM1_TOP_OFFSET)
    {
        uint32_t block;
        volatile uint32_t ctrl_status;
        uint32_t errors;

        if(offset < NVM1_BOTTOM_OFFSET)
        {
            block = NVM_BLOCK_0;
        }
        else
        {
            block = NVM_BLOCK_1;
            offset = offset - NVM1_BOTTOM_OFFSET;
        }

        fill_wd_buffer(pidata, length_written, block, offset);

        /* Set requested locking option. */
        g_nvm[block]->PAGE_LOCK = lock_page;

        /* Issue program command */
        g_nvm[block]->CMD = PROG_ADS | (offset & PAGE_ADDR_MASK);

        /* Wait for NVM to become ready. */
        ctrl_status = wait_nvm_ready(block);

        /* Check for errors. */
        errors = ctrl_status & WRITE_ERROR_MASK;
        if(errors)
        {
            /* Signal that an error occurred by returning 0 a a number of bytes written. */
            length_written = 0u;
            *p_status = g_nvm[block]->STATUS;
        }
        else
        {

```

```
/* Perform a verify. */
g_nvm[block]->CMD = VERIFY_ADS | (offset & PAGE_ADDR_MASK);
/* Wait for NVM to become ready. */
ctrl_status = wait_nvm_ready(block);

/* Check for errors. */
errors = ctrl_status & WRITE_ERROR_MASK;
if(errors)
{
/* Signal that an error occurred by returning 0 a a number of bytes written. */
length_written = 0u;
*p_status = g_nvm[block]->STATUS;
}
}
}

return length_written;
}
```

MSS_NVM_read()

```
nvm_status_t
MSS_NVM_read
(
    uint8_t * addr,
    uint8_t * podata,
    uint32_t len
)
{
    nvm_status_t status = NVM_SUCCESS;
    uint8_t * nvmmaddr = 0u;

    /* add read offset to read the data */
    nvmmaddr = ( (uint8_t *) ( NVM_BASE_ADDRESS + addr ) );
    while( ( len > 0) && ( NVM_SUCCESS == status ) )
    {
        len--;
        podata[len] = nvmmaddr[len];
        if( ( g_nvm[NVM_BLOCK_0]->STATUS & MSS_NVM_ECC2 ) )
            status = FAILED;
    }
    return status;
}
```

verify_nvm()

```

static uint32_t
verify_nvm
(
    uint32_t addr,
    const uint8_t * pidata,
    uint32_t length,
    uint32_t * p_status
)
{
    uint32_t length_verified;
    uint32_t offset;

    *p_status = 0u;

    offset = addr & NVM_OFFSET_SIGNIFICANT_BITS; /* Ignore remapping. */

    ASSERT(offset <= NVM1_TOP_OFFSET);

    /* Adjust length to fit within one page. */
    length_verified = get_remaining_page_length(offset, length);

    if(offset <= NVM1_TOP_OFFSET)
    {
        uint32_t block;
        volatile uint32_t ctrl_status;
        uint32_t errors;

        if(offset < NVM1_BOTTOM_OFFSET)
        {
            block = NVM_BLOCK_0;
        }
        else
        {
            block = NVM_BLOCK_1;
            offset = offset - NVM1_BOTTOM_OFFSET;
        }

        fill_wd_buffer(pidata, length_verified, block, offset);

        /* Perform a verify. */
        g_nvm[block]->CMD = VERIFY_ADS | (offset & PAGE_ADDR_MASK);
        /* Wait for NVM to become ready. */
        ctrl_status = wait_nvm_ready(block);

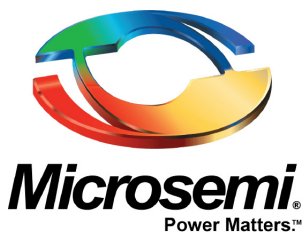
        /* Check for errors. */
        errors = ctrl_status & WRITE_ERROR_MASK;
        if(errors)
        {
            /* Signal that an error occurred by returning 0 a a number of bytes written. */
            length_verified = 0u;
            *p_status = g_nvm[block]->STATUS;
        }
    }
    return length_verified;
}

```


List of Changes

The following table shows the important changes made in this document for each revision:

Revision	Changes	Page
Revision 9 (March 2016)	Updated the document for Libero SoC v11.7 software release (SAR 77068).	NA
Revision 8 (October 2015)	Updated the document for Libero SoC v11.6 software release (SAR 71726).	NA
Revision 7 (February 2015)	Updated the document for Libero SoC v11.5 software release (SAR 64416).	NA
Revision 6 (September 2014)	Updated the document for Libero SoC v11.4 software release (SAR 59913).	NA
	Updated the document for SmartFusion2 Evaluation Kit details (SAR 59913).	NA
Revision 5 (May 2014)	Updated the document for Libero SoC v11.3 software release (SAR 57098).	NA
Revision 4 (November 2013)	Updated the document for Libero SoC v11.2 software release (SAR 52884).	NA
Revision 3 (May 2013)	Updated the document for Libero SoC v11.0 software release (SAR 47576).	NA
Revision 2 (March 2013)	Updated the document for Libero SoC v11.0 beta SP1 software release (SAR 44871).	NA
Revision 1 (November 2012)	Updated the document for Libero SoC v11.0 beta SPA software release (SAR 42847).	NA



Microsemi Corporate Headquarters
One Enterprise, Aliso Viejo,
CA 92656 USA

Within the USA: +1 (800) 713-4113
Outside the USA: +1 (949) 380-6100
Sales: +1 (949) 380-6136
Fax: +1 (949) 215-4996

E-mail: sales.support@microsemi.com

© 2016 Microsemi Corporation. All rights reserved. Microsemi and the Microsemi logo are trademarks of Microsemi Corporation. All other trademarks and service marks are the property of their respective owners.

Microsemi Corporation (Nasdaq: MSCC) offers a comprehensive portfolio of semiconductor and system solutions for communications, defense & security, aerospace and industrial markets. Products include high-performance and radiation-hardened analog mixed-signal integrated circuits, FPGAs, SoCs and ASICs; power management products; timing and synchronization devices and precise time solutions, setting the world's standard for time; voice processing devices; RF solutions; discrete components; enterprise storage and communication solutions, security technologies and scalable anti-tamper products; Ethernet solutions; Power-over-Ethernet ICs and midspans; as well as custom design capabilities and services. Microsemi is headquartered in Aliso Viejo, Calif., and has approximately 4,800 employees globally. Learn more at www.microsemi.com.

Microsemi makes no warranty, representation, or guarantee regarding the information contained herein or the suitability of its products and services for any particular purpose, nor does Microsemi assume any liability whatsoever arising out of the application or use of any product or circuit. The products sold hereunder and any other products sold by Microsemi have been subject to limited testing and should not be used in conjunction with mission-critical equipment or applications. Any performance specifications are believed to be reliable but are not verified, and Buyer must conduct and complete all performance and other testing of the products, alone and together with, or installed in, any end-products. Buyer shall not rely on any data and performance specifications or parameters provided by Microsemi. It is the Buyer's responsibility to independently determine suitability of any products and to test and verify the same. The information provided by Microsemi hereunder is provided "as is, where is" and with all faults, and the entire risk associated with such information is entirely with the Buyer. Microsemi does not grant, explicitly or implicitly, to any party any patent rights, licenses, or any other IP rights, whether with regard to such information itself or anything described by such information. Information provided in this document is proprietary to Microsemi, and Microsemi reserves the right to make any changes to the information in this document or to any products and services at any time without notice.