

Description

The ZLE8816 evaluation board provides a quick and easy method for evaluating the MT8816 8 x 16 Analog Switch Array for video switching in the 44 Lead TQFP package.

The evaluation platform includes a populated PCB, a CD containing software for programming the MT8816 from a PC and product data sheets.

Operation and channel selection is easily accomplished by using the USB port. manual

Features

- Emulates a complete 16 x 8 video switcher
- Simple and easy to use
- PC controlled channel selection

Ordering Information		
Part Number	Description	Package Supported
ZLE8816BADA	Evaluation Card for 16 x 8 Cross-point Switch	MT8816AF1

- Optional simple manual control with no PC required
- Configured for buffed inputs and buffed outputs
- Configured for 75 Ω environments

Applications

- Video switches and routers
- Security systems
- Video Conferencing

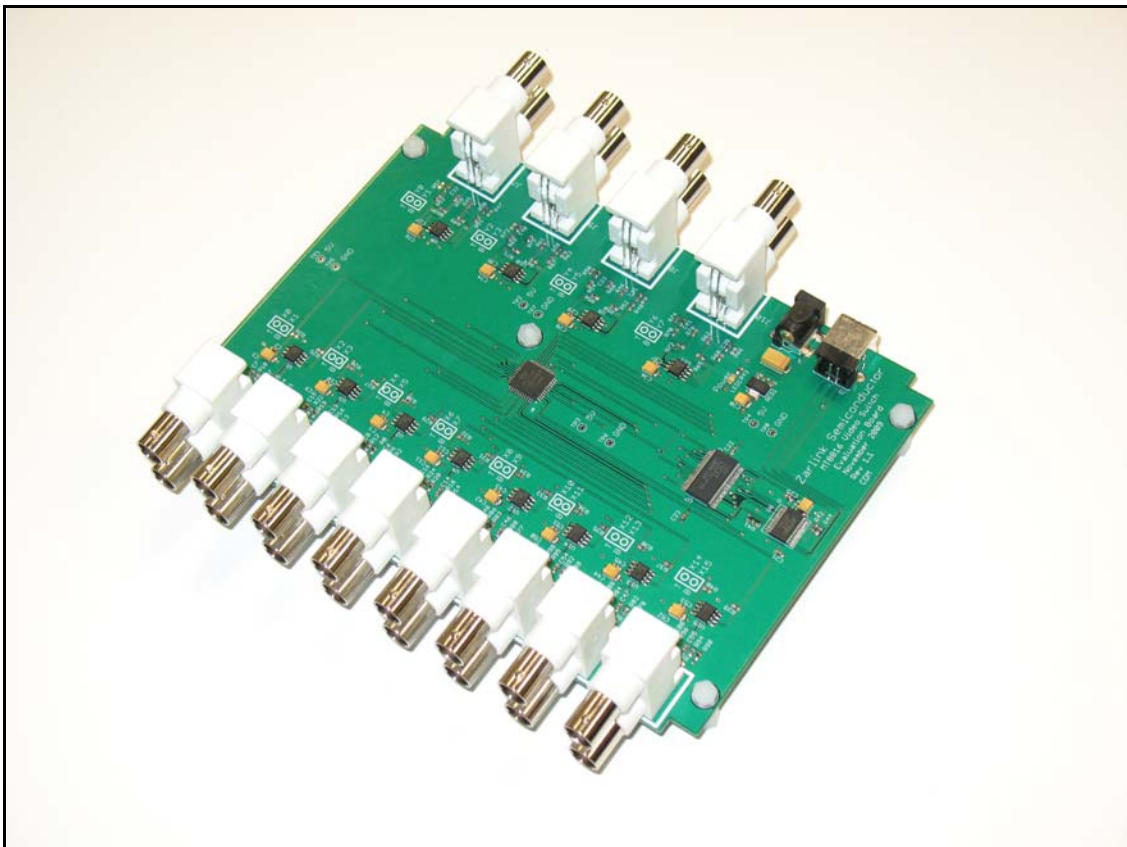


Figure 1 - ZLE8816 Evaluation Board

Functional Block Diagram

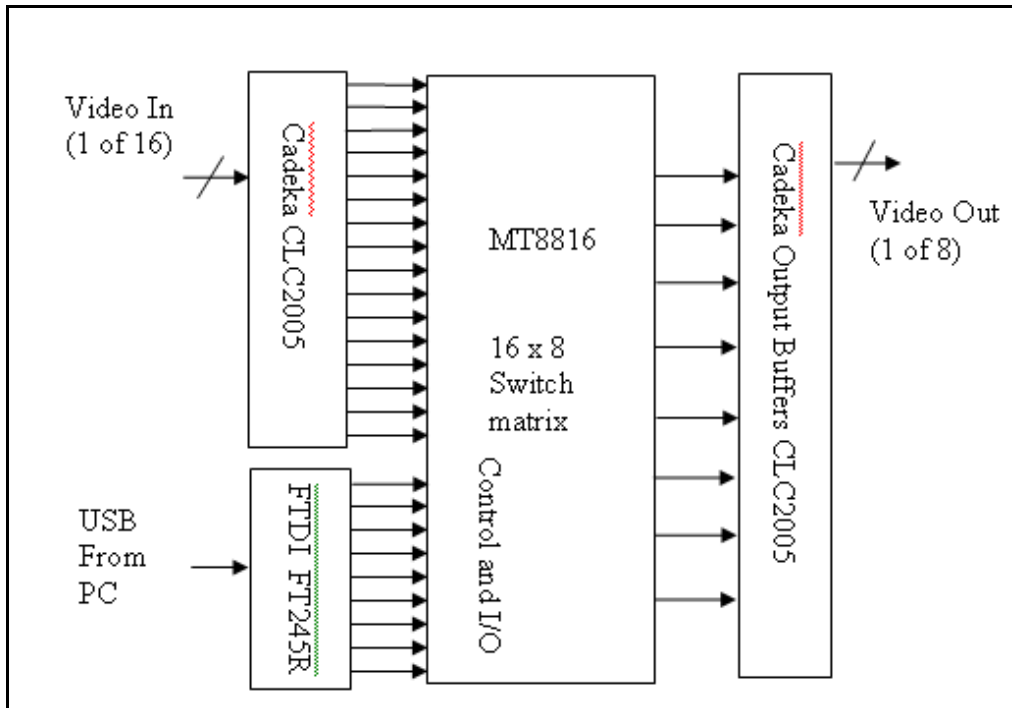


Figure 2 - Functional Block Diagram

Functional Description

The functional block diagram illustrates the major components of the evaluation board.

In the center is the MT8816, a 16 x 8 analog cross-point IC. At the left are 16 video input buffers from Cadeka (CLC2005). At the right hand side are 8 video output buffers from Cadeka (CLC2005) and each buffer is capable of driving a 75 Ω video load directly. BNC connectors are provided for all video inputs and video outputs.

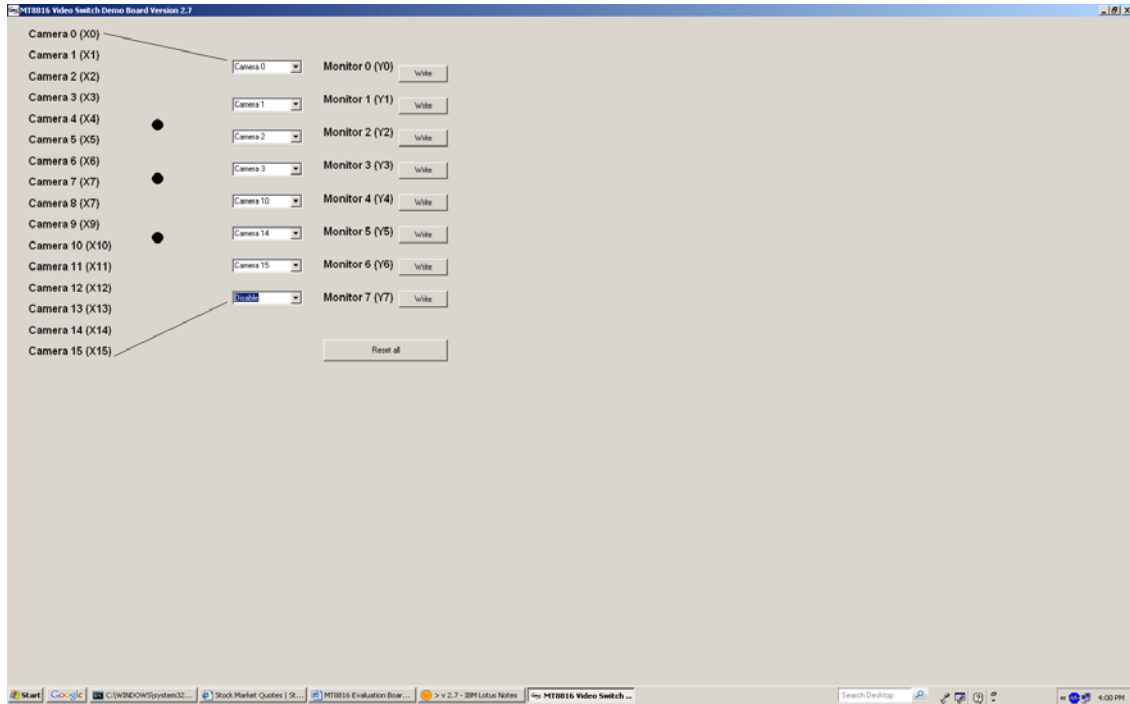
A FT245R USB FIFO from Future Technology Devices International (FTDI) provides a standard USB interface for a PC. Through this USB connection the PC controls the programming of the evaluation board.

Instruction

Install the software drivers and the Video Switch .exe in the same directory.

Click on the Video Switch ICON and the following GUI will appear.

GUI Interface



The 8 output monitors can select the video source from 1 of the 16 cameras as input by the pull down menu.

A write action completes the selection.

To disconnect, the disable option should be used for any connections selected.

The 'Reset all' button will clear all connections. Please see the MT8816 data sheet at the following link http://www.zarlink.com/zarlink/hs/82_MT8816.htm for further detail.



**For more information about all Zarlink products
visit our Web Site at
www.zarlink.com**

Information relating to products and services furnished herein by Zarlink Semiconductor Inc. or its subsidiaries (collectively "Zarlink") is believed to be reliable. However, Zarlink assumes no liability for errors that may appear in this publication, or for liability otherwise arising from the application or use of any such information, product or service or for any infringement of patents or other intellectual property rights owned by third parties which may result from such application or use. Neither the supply of such information or purchase of product or service conveys any license, either express or implied, under patents or other intellectual property rights owned by Zarlink or licensed from third parties by Zarlink, whatsoever. Purchasers of products are also hereby notified that the use of product in certain ways or in combination with Zarlink, or non-Zarlink furnished goods or services may infringe patents or other intellectual property rights owned by Zarlink.

This publication is issued to provide information only and (unless agreed by Zarlink in writing) may not be used, applied or reproduced for any purpose nor form part of any order or contract nor to be regarded as a representation relating to the products or services concerned. The products, their specifications, services and other information appearing in this publication are subject to change by Zarlink without notice. No warranty or guarantee express or implied is made regarding the capability, performance or suitability of any product or service. Information concerning possible methods of use is provided as a guide only and does not constitute any guarantee that such methods of use will be satisfactory in a specific piece of equipment. It is the user's responsibility to fully determine the performance and suitability of any equipment using such information and to ensure that any publication or data used is up to date and has not been superseded. Manufacturing does not necessarily include testing of all functions or parameters. These products are not suitable for use in any medical products whose failure to perform may result in significant injury or death to the user. All products and materials are sold and services provided subject to Zarlink's conditions of sale which are available on request.

Purchase of Zarlink's I²C components conveys a license under the Philips I²C Patent rights to use these components in an I²C System, provided that the system conforms to the I²C Standard Specification as defined by Philips.

Zarlink, ZL, the Zarlink Semiconductor logo and the Legerity logo and combinations thereof, VoiceEdge, VoicePort, SLAC, ISLIC, ISLAC and VoicePath are trademarks of Zarlink Semiconductor Inc.

TECHNICAL DOCUMENTATION - NOT FOR RESALE
