

TimeCraft

Graphical User Interface (GUI) Management Utility for Synchronization Network Elements

Summary

TimeCraft is a Microchip software tool with a user-friendly GUI for managing individual synchronization devices. Offering intuitive displays of its equipment management capabilities, TimeCraft reduces the complexity of using TL1 or CL1 commands. Its graphical interface has a similar look and feel to typical Microsoft® Windows® applications, and its icons and simple point-and-click operations make it easy to supervise and control a synchronization network element locally or remotely.

TimeCraft translates management interface commands. Offering intuitive displays of its equipment management capabilities, TimeCraft reduces the complexity of using TL1 or CL1 commands. Its graphical interface has a similar look and feel to typical Microsoft® Windows® applications, and its icons and simple point-and-click operations make it easy to supervise and control a synchronization network element locally or remotely to provide limited Fault, Configuration, Accounting/Inventory, Performance and Security (FCAPS) capability at the equipment level. It enables you to more efficiently perform a variety of tasks including remote firmware upgrades, port-level provisioning and event-driven fault management. It also can be used to manage physical and logical configuration, performance and security in a system.

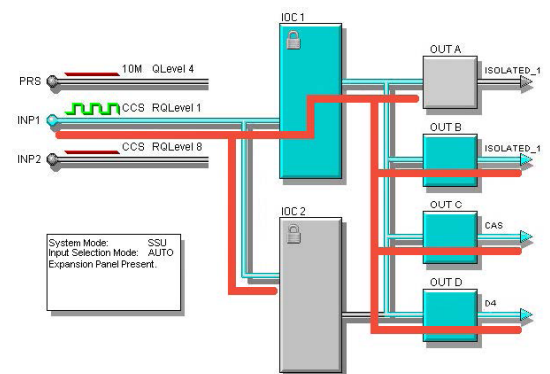
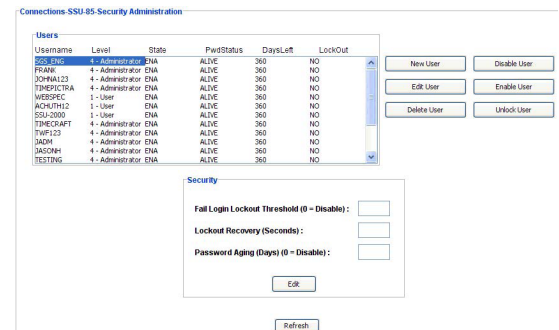
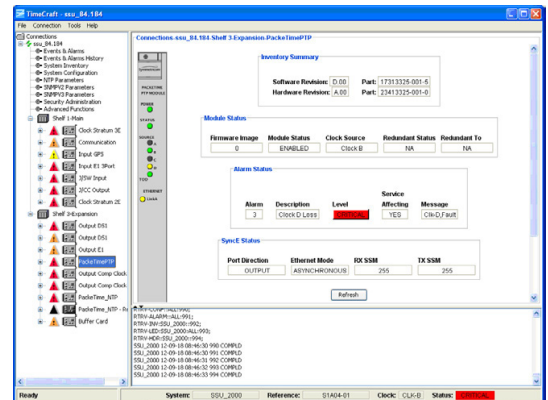
Take your network administration capabilities to the next level with TimeCraft software. Download it for free from www.microchip.com

Key Features

- Graphical User Interface for TL1 commands
- Local and remote management

Key Benefits

- Simplifies equipment user interface for more efficient management
- Available at no charge on the Microchip website



Recommended Minimal Platform Requirements

Operating Systems

- Windows 2000 SP1 or later
- Windows XP
- Windows 7 (32 bit or 64 bit)

Hardware

- 1 GHz Processor
- 512 MB RAM
- 1 GB free disk space
- SVGA display (with minimum screen resolution set at 1280 × 1024)

Supported Microchip Systems

TimeCraft supports the following network elements:

- TimeProvider® 1000/1100
- SSU 2000/SSU 2000e
- TimeHub® 5500
- TimeSource® 3000/3500
- TimeSource 3100/3600
- TimeSource 3550 enhanced PRTC (ePRTC)
- TimeSource 3050/3550

For More Information Visit

<https://www.microsemi.com/product-directory/management-monitoring/4157-timecraft>