



---

## User HSM Installation and Setup User Guide

---

### Introduction

---

This user guide provides installation and setup instructions for the User HSM (U-HSM) Server. The U-HSM server is configured to generate HSM jobs. The U-HSM server can generate jobs for the following scenarios:

- Test-execution of the job on the same U-HSM server utilizing the Manufacturer HSM Server (M-HSM) function of U-HSM.
- Job execution is done on the contract manufacturer side using M-HSM.
- Job execution is done by the Secure In-House Programming Solution (siHP).

See the [Secure Production Programming Solution \(SPPS\) User Guide](#) for information about these scenarios and a description of the HSM flow.

This user guide contains the following sections:

- [U-HSM Server](#), describes the U-HSM server components and system requirements.
- [U-HSM Installation and Setup Scenarios](#), provides a general description of the installation scenarios.
- [Initial U-HSM Server Installation and Setup](#), explains the installation and setup process.
- [U-HSM Reconfiguration and Post-Installation Actions](#), provides instructions for the setup and maintenance actions that can be performed on an installed and provisioned U-HSM server.
- [U-HSM Server Replication](#), explains how to replicate an existing U-HSM server to one or more new U-HSM servers.

For installation and setup instructions for the Contract Manufacturer HSM (M-HSM), see the [Manufacturer HSM Installation and Setup Guide](#).

---

---

# Table of Contents

---

Introduction.....	1
1. U-HSM Server.....	4
1.1. Server Components.....	4
1.2. Security World and HSM Modules.....	4
1.3. System Requirements.....	7
2. U-HSM Installation and Setup Scenarios.....	9
3. Initial U-HSM Server Installation and Setup.....	10
3.1. Software Installation.....	10
3.2. U-HSM Server Software Installation.....	10
3.3. HSM Hardware Module Installation.....	10
3.4. U-HSM Server Provisioning.....	14
3.5. FTP Server Setup.....	27
4. Running U-HSM Server as a Service.....	34
4.1. Service Setup.....	34
4.2. U-HSM Control Panel Application.....	36
5. U-HSM Reconfiguration and Post-Installation Actions.....	39
5.1. HSM Module Replacement.....	39
5.2. Key Exchange with Microchip.....	39
5.3. Import the Public Keys of M-HSM.....	39
5.4. Export the Public Keys for Sending to M-HSM.....	40
5.5. Create the DFK DB and Manufacturing Keys for M-HSM.....	40
5.6. Upgrade the HSM Module Firmware.....	40
6. U-HSM Server Replication.....	41
6.1. Install the Software.....	41
6.2. Copy Over the Security World.....	41
6.3. Copy Over the U-HSM Server.....	41
6.4. Install a New HSM Module.....	41
6.5. Start the U-HSM Server.....	41
6.6. Set Up the FTP Server.....	41
7. Referenced Documents.....	42
8. Revision History.....	43
9. Microchip FPGA Technical Support.....	44
9.1. Customer Service.....	44
9.2. Customer Technical Support.....	44
9.3. Website.....	44
9.4. Outside the U.S.....	44
The Microchip Website.....	45
Product Change Notification Service.....	45

---

---

Customer Support.....	45
Microchip Devices Code Protection Feature.....	45
Legal Notice.....	46
Trademarks.....	46
Quality Management System.....	47
Worldwide Sales and Service.....	48

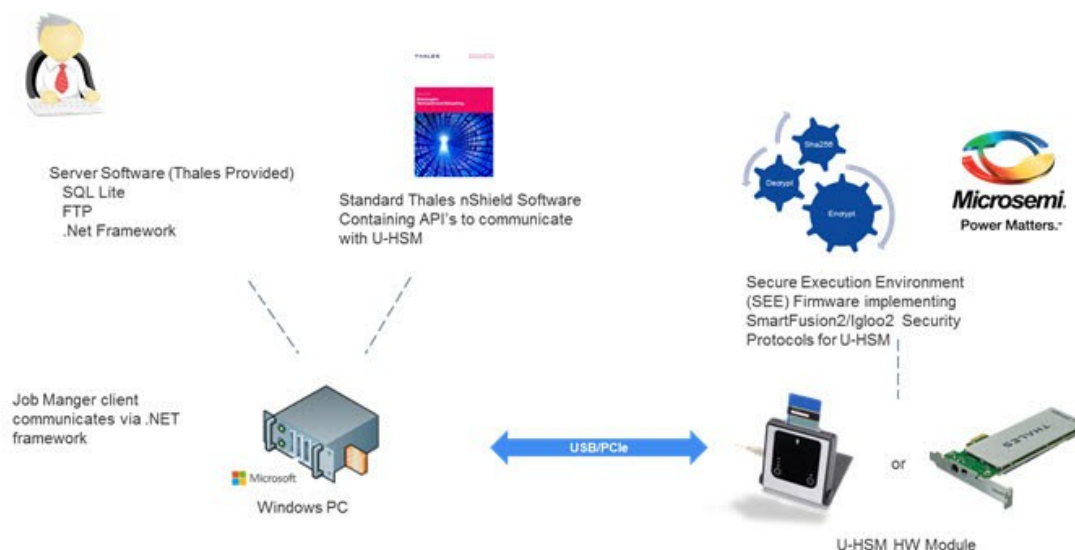
## 1. U-HSM Server

The U-HSM server is used to generate programming jobs and securely send them for execution to a contract manufacturer or Secure In-House Programming Solution (sIHP) system. Test-execution of the HSM job can be done using the M-HSM function of the U-HSM server. The U-HSM server is designed to serve requests from the Job Manager Tool, which once the U-HSM server is up and running, must be configured to work with it. See the [Programming Job Manager User Guide](#) for more information.

### 1.1 Server Components

The following figure shows the components of the U-HSM server.

**Figure 1-1. U-HSM Server Components**



### 1.2 Security World and HSM Modules

The most important component of the U-HSM server is the HSM module. The HSM module carries out cryptographic operations involving protected security keys. All data is stored outside the module on the disk of the host system in encrypted form. Every module is associated with the Security World (see the *nShield Edge and Solo User Guide for Windows*) that combines a set of keys giving module access to the information in the database located on the PC side. The same Security World can be replicated to multiple HSM servers, if needed. The HSM module is controlled through standard nCipher nShield software that includes hardware drivers and low-level components providing access to the services inside the module. Custom SEE firmware (algorithms related to the protocols implemented in Microchip devices) and known as the SEE Machine is stored on the disk of the host PC, and is loaded into the module as part of the power-up process.

#### 1.2.1 HSM Module Types

Microchip is the official redistributor of nShield Edge ([Figure 1-2](#)) and nShield Solo HSM Modules ([Figure 1-3](#)).

---

**Figure 1-2. nCipher nShield Edge HSM Module****Figure 1-3. nShield Solo PCIe HSM Module**

The nShield Edge module is attached to USB 2.0 port of the PC and has an integrated card reader. The nShield Solo module is PCIe-based and requires a desktop PC with a spare PCIe port. The card reader is attached to the module through a cable.

**Note:** For the HSM module specification, including performance characteristics, see the *nShield Edge and Solo User Guide for Windows*.

### 1.2.2 Security World Cards

Both types of HSM modules are shipped with the nShield Security World cards ([Figure 1-4](#)) that can be used to create an Administrator Card Set (ACS). The ACS provides access to the administrative functions of the Security World:

- Control access to Security World configuration
- Authorize recovery and replacement operations

ACS cards are initialized upon creation of the Security World.

Figure 1-4. Example of nShield Security World Card



**Note:** There is a special requirement regarding total and quorum numbers of ASC cards. See the *nShield Edge and Solo User Guide for Windows* for more information.

### 1.2.3 Activator Card and Feature Licensing (nCipher)

The Activator card (Figure 1-5) enables HSM Module product features and is generated along with the license purchase. Installation instructions in this document show how to use this type of card.

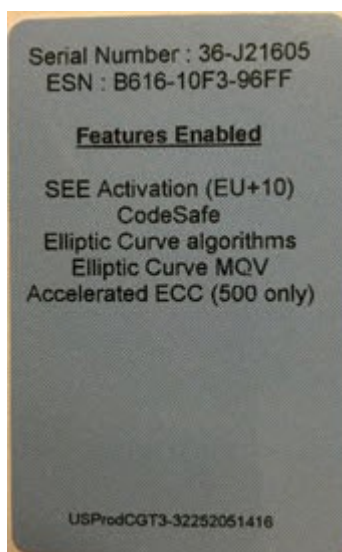
Figure 1-5. Example of Activator Card



This card is linked to the specific hardware module and must match the module serial number (Figure 1-6). The *Serial Number* field shown on the back of the card must match the serial number of the module.

All features that can be enabled by this card are listed on the back of the card.

Figure 1-6. Back of the Activator Card



**Note:** In addition to Activation cards, licensing features can be enabled using a file on disk or by entering an initialization bitstream from the keyboard. Additional licensing features can be added to the module later through a separate PO process.

#### 1.2.4 Module Warrant File (nCipher)

Every nShield HSM Module comes with a warrant file generated by nCipher. This file provides cryptographic proof of module origin (explained in the key management section of the [Secure Production Programming Solution \(SPPS\) User Guide](#)). The warrant file is provided through the HSM Module purchase process.

**Note:** This SPPS version supports nCipher Warrant File in KLF (also known as KLF1) format. Warrant file can also be requested from nCipher technical support.

#### 1.2.5 HSM Module License File (Microchip)

Microchip provides a Microchip-generated license file that binds the user-created Security World with one or more HSM modules through their serial numbers.

### 1.3 System Requirements

The U-HSM server can run on Windows 7 x64 Pro, Windows 8.1 x64, or Windows 10 x64 operating systems. Server software is installed on a dedicated physical machine with one nShield Edge or Solo HSM module attached.

**Note:** It is possible to use a virtual machine to run HSM server. However, Microchip has only validated U-HSM server functionality on the nShield Edge module using a VMWare virtual machine. Validation was performed using the nCipher-suggested method of connecting the Edge module directly to the host system and then giving the virtual machine module access through a virtual COM interface added to the host system by the module driver. See the *nShield Edge and Solo User Guide for Windows* for setup instructions.

#### 1.3.1 Acquire the U-HSM Components

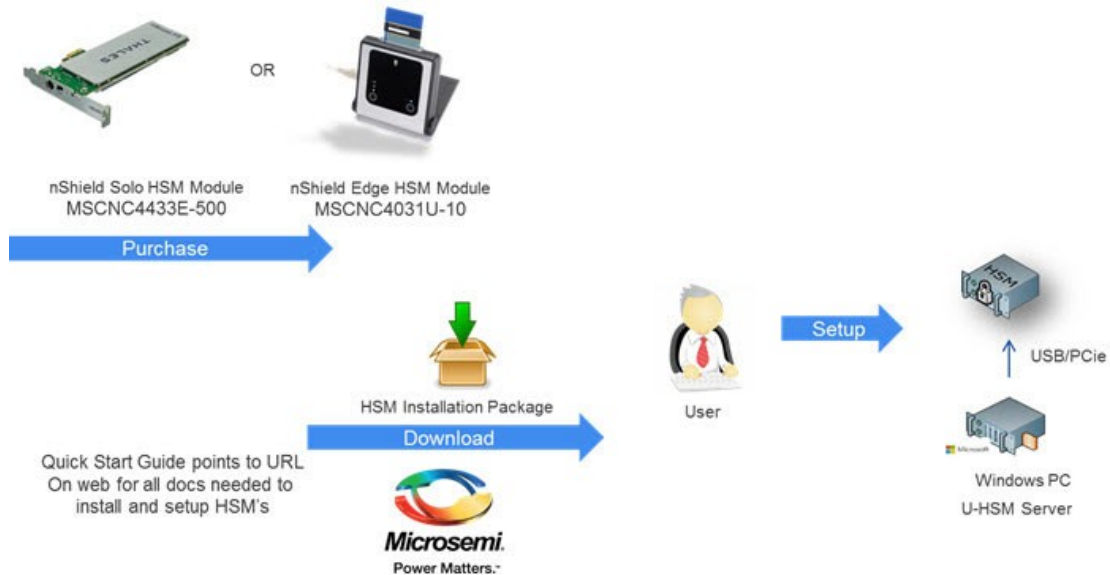
HSM hardware modules are purchased directly from Microchip. Every module comes with the components described in section [Security World and HSM Modules](#).

The following is a list of the U-HSM components. [Figure 1-7](#) provides a high level flow view:

- nShield Edge or Solo HSM Module
  - Module
  - Card reader (Solo module only. Edge module has integrated card reader)
  - Mounting hardware for regular and compact desktop form factors (Solo module only)

- Set of Security World cards
- Activator card (additional licensing features can be provided in a separate file)
- Warrant File in KLF format (created by nCipher, supplied by Microchip or requested from nCipher support)
- Licensing File (created and provided by Microchip after a Security World UUID is issued and serial number of the HSM module(s) is known)
- User provides PC with supported operating systems installed (see section [System Requirements](#)).

**Figure 1-7. Acquiring U-HSM Parts**





## 2. U-HSM Installation and Setup Scenarios

This sections describes the following installation and setup options:

1. Initial installation
  - 1.1. Install all required software components.
  - 1.2. Update all required U-HSM server configuration files.
  - 1.3. Install the HSM module.
  - 1.4. Provision the U-HSM server.
    - Create new Security World and Administrator Card Set (ACS).
    - Generate all required U-HSM server keys.
    - Exchange public encryption and public verify keys with M-HSM or sIHP server.
    - Exchange public keys with MFG-HSM.
    - Import Diversified Factory Key Database (DFK DB) (see the [Secure Production Programming Solution \(SPPS\) User Guide](#) for information about DFK DB) and the MFG keys received from Microchip.
    - If job execution is done with the help of a contract manufacturer, prepare DFK DB and MFG keys for use by M-HSM.
2. Replication of the existing U-HSM server (creates a copy of already provisioned U-HSM server)
  - 2.1. Install all required software components.
  - 2.2. Copy Security World from the source U-HSM server.
  - 2.3. Copy over the U-HSM server software and configuration files.
  - 2.4. Copy the over existing DFK DB.
  - 2.5. Install and connect an HSM module to the Security World.
3. Post-Installation (maintenance) steps
  - 3.1. Upgrade the HSM module firmware.
  - 3.2. Replace the HSM module.
  - 3.3. Exchange public keys with MFG-HSM.
  - 3.4. Import public keys of an M-HSM.
  - 3.5. Export public keys for sending to an M-HSM.
  - 3.6. Prepare the DFK DB for sending to an M-HSM.

### 3. Initial U-HSM Server Installation and Setup

This section describes how to install and set up a new U-HSM server.

**Note:** Text highlighted in red in this section indicates commands or other information to take note of.

#### 3.1 Software Installation

This section explains the manual installation process for setting up the U-HSM server.

One of the supported operating systems must be installed with all security and stability updates applied.

- Microsoft Visual C++ 2010 Redistributable Package (x64) [available from Microsoft](#)
- Visual C++ Redistributable for Visual Studio 2012 (x64) [available from Microsoft](#)
- .NET Framework 4.0 or up [available from Microsoft](#)
- FTP Server (for example, [FileZilla](#))
- [Java Runtime 2 32-bit](#) available from Oracle
- nShield Security World Software (coming with the HSM modules or can be requested from nCipher support):
  - For Windows 7 x64 Pro and Windows 8.1 x64, use version 11.70.00.
  - For Windows 10 x64 please use version 12.50.4 with Compatibility Package v 1.0.0.
  - The installation disk contains a folder with documentation in PDF format.
  - Installation of SNMP client can be ignored as the software for this implementation does not use it.
  - The default installation directory for the Security World is `C:\Program Files (x86)\nCipher\nfast`.
  - All Security World utilities referred to in this guide are located in `%NFAST_HOME%\bin`.
  - The Microchip SPPS solution is tested against the specific version of the Security World. See the *U-HSM Server Release Notes* for the compatible version number.

#### 3.2 U-HSM Server Software Installation

1. Create the top-level directory.  
**Note:** This user guide uses `C:\Microsemi` as an example.
2. Unpack all files and subdirectories from the provided zip file under the *U-HSM* directory and copy to:  
`C:\Microsemi`.
3. Verify that the following additional sub-directories exist:
  - `C:\Microsemi\DFKDB`: This location stores imported DFK databases
  - `C:\Microsemi\JobDB`: This location stores job ticket database files
  - `C:\Microsemi\JobDB\JobDBArchive`: Folder for archiving completed job ticket database files
  - `C:\Microsemi\Logs`: For log files

#### 3.3 HSM Hardware Module Installation

**Note:** This section provides the steps to connect a new HSM module to the PC. If you are replacing the HSM module on a configured U-HSM server, start from section [HSM Module Replacement](#). If you are replicating the U-HSM server, see section [Set Up a New HSM Module](#).

The U-HSM server requires the presence of a single HSM module. After the installation of nShield software, as shown in section [Software Installation](#), the system must have module drivers and all nShield utilities installed.

##### 3.3.1 Connect the HSM Module to PC

Follow the instructions in the *nShield Edge and Solo User Guide for Windows* to physically connect the module to the PC.

Once the module is connected, read module status with the `nfkminfo` utility. The output of `nfkminfo` shows information about the attached module, such as ESN (serial number), status, and so on. If the module is not detected or in the Failed state, restart the `nfast` server and read the module status again:

```
net stop "nfast server"  
net start "nfast server"
```

**Note:** If necessary, the HSM module can be erased to the factory state using the `new-world` command. For example, `new -world -e -m1` erases the module with the ID = 1 to the factory state. This operation is done in the pre-initialization mode.

### 3.3.2 Upgrade HSM Module Firmware

This section provides instructions for the nCipher firmware upgrade. This firmware physically resides inside the HSM module and is different from the Microchip-provided SEE machine.

#### 3.3.2.1 Firmware Revisions

The firmware revision of the HSM module that is used in SPPS must be approved by Microchip. The list of the approved firmware revisions is available in the *U-HSM Release Notes*. Additional instructions about firmware revisions can be published through Microchip security advisories.

**Note:** Any HSM firmware revision that is not approved by Microchip is not guaranteed to work and is not guaranteed to satisfy security requirements of the SPPS solution. The use of such firmware revisions is done at customer's own risk.

nCipher HSM module firmware images are available in the HSM Installation media, or can be obtained directly from nCipher customer service.

**Note:** Installation media might include various versions of the firmware that might be FIPS certified or awaiting FIPS certification. Your choice depends on the security policies of your organization.

#### 3.3.2.2 Compatibility of Firmware Revisions



The firmware upgrade might be non-reversible. The following section provides important details.

nCipher HSM module firmware has two versioning characteristics:

- Firmware revision number
- Version Security Number (VSN)

The firmware revision number identifies the individual version of the firmware, while the VSN can group multiple revisions together and is used to restrict revision downgrade, so that the intruders cannot move a module to the firmware with known security issues. The downgrade is possible to any firmware revision with the same VSN as the one in the module. The upgrade can be done to any revision with the same or higher VSN number.

Information about firmware revisions and their respective VSN numbers is available on the Security World installation media of firmware upgrade media distributed as part of nCipher security advisories.

#### 3.3.2.3 Read the HSM Module Firmware Revision Information

The current revision of the HSM firmware can be checked using the "enquiry" Security World utility. An example of reading the firmware revision number is shown in [Figure 3-1](#).

**Figure 3-1. Reading HSM Module Firmware Revision**

```

Module #1:
enquiry reply flags  none
enquiry reply level  Six
serial number       1301-C8A9-BEF7
mode                operational
version            2.55.1
speed index        544
rec. queue         19..152
level one flags     Hardware HasTokens
version string      2.55.1cam7 built on Jul 08 2015 14:24:15
checked in          000000004856847b Mon Jun 16 08:19:23 2008
level two flags     none
max. write size     8192
level three flags   KeyStorage
level four flags    OrderlyClearUnit HasRTC HasNVRAM HasNSOPermsCmd ServerHasPollCmds
FastPollSlotList HasSEE HasKLF H
asShareACL HasFeatureEnable HasFileOp HasPCIPush HasKernelInterface HasLongJobs ServerHasLongJobs
AESModuleKeys NTokenCm
ds JobFragmentation LongJobsPreferred Type2Smartcard ServerHasCreateClient HasInitialiseUnitEx
module type code    7
product name        nC1003P/nC3023P/nC3033P
device name         #1 PCI bus 6 slot 5
EnquirySix version  6
impath kx groups    DHPrime1024 DHPrime3072
feature ctrl flags   LongTerm
features enabled     GeneralSEE StandardKM
version serial      26
rec. LongJobs queue 18
SEE machine type    PowerPCSXF
supported KML types DSAP1024s160 DSAP3072s256

```

### 3.3.2.4 Upgrade Firmware

This section provides general guidance for the firmware update. If the firmware upgrade is done due to a Microsemi security advisory, please follow the instructions in the advisory. General description of the upgrade process and instruction for switching HSM module into specific mode is available in the *nShield Edge and Solo User Guide for Windows*.

Note: The firmware upgrade process erases all information contained in the module, except the enabled licensing features explained in section [Enable the Module Licensing Feature](#).

Perform the following steps for firmware upgradation:

1. Switch the module mode to the Maintenance mode. To switch the nShield Edge module to the maintenance state, use the **Mode** button to change mode to the M (Maintenance mode) and then push and hold down the **Clear** button to activate the M state.  
The mode switching on the Solo HSM module is done by moving the three-position switch to the M state and resetting the module using a paper clip. Both module controls are located on the Solo module and are accessible outside the PC box. For more detailed mode switching instructions, see the *nShield Edge and Solo User Guide for Windows*.
2. Load the new firmware using the `loadrom` command, pointing to the firmware image.  
**Note:** When entered, the `loadrom` command starts without prompting for user confirmation.

[Figure 3-2](#) shows an example of the output during firmware upgrade.

**Figure 3-2. Firmware Upgrade**

```

C:\>loadrom -m1 C:\shared\FWUpgrade\firmware\2-55-1\ncx1z-26.nff

version 2.50.16cam18 built on Sep 23 2010 20:36:19
programming module #1
module erased
starting programming *+
firmware integrity mech. DSAhSHA256
module accepted signature
block size allowed by unit 1910, using 1910
loading chunk 0 ++++++ programming done
loading chunk 1 ++++++ programming done
loading chunk 2 ++++++ programming done
loading chunk 3 ++++++ programming done
loading chunk 4 ++++++ programming done
loading chunk 5 ++++++ programming done
loading chunk 6 ++++++ programming done
loading chunk 7 ++++++ programming done
loading chunk 8 ++++++ programming done
loading chunk 9 ++++++ programming done
loading chunk 10 ++++++ programming done
loading chunk 11 ++++++ programming done
programming done

```

3. Switch module mode to the Pre-Init mode.
4. Initialize the module using the `Initunit` command.

**Figure 3-3. Module Initialization during Firmware Upgrade**

```

C:\>initunit
Initialising Unit 1 (SetNSOPerms)
Setting dummy HKNSO
Module Key Info:
HKNSO is:C8 39 AC 0D EE D9 A9 65 AC F9 12 0F F2 02 F9 79 8C 2C A4 5D
HKM[0] is:FD 2D 47 53 86 05 CF F4 27 53 1A 01 FD 8D E8 02 00 DD C7 55

```

5. Confirm that the module firmware revision is upgraded as expected using the `enquiry` command.

### 3.3.3 Enable the Module Licensing Feature

This section describes how to enable specific HSM module features.

**Note:** To activate new license features using the Feature Enabling Tool (fet) utility, the module must be switched to the pre-initialization mode.

To run custom firmware created for the SPPS system (SEE Machine), the module must have the "SEE Activation (EU +10) feature enabled as shown in the sample in [Figure 3-4](#). Feature status of the module can be checked or activated using fet (feature enabling tool).

**Figure 3-4. Sample Output of Feature Activation Tool**

```
C:\>fet

Feature Enable Tool
=====

payShield Activation
| ISO Smart Card Support
| | Remote Operator
| | | Korean Algorithms
| | | SEE Activation (EU+10)
| | | SEE Activation (Restricted)
| | | CodeSafe SSL
| | | Elliptic Curve algorithms
| | | Elliptic Curve MQV
| | | Accelerated ECC
Mod Electronic | | | | | | | | | |
No. Serial Number
1 586F-B963-9146 -- NO NO NO NO YES NO NO YES YES NO

0. Exit Feature Enable Tool.
1. Read FEM certificate(s) from a smart card or cards.
2. Read FEM certificate from a file.
3. Read FEM certificate from keyboard.
4. Write table to file.
```

Enter option :

Choose option one and activate the features listed on your Activator Card (see section [Activator Card and Feature Licensing \(nCipher\)](#)). The fet auto-detects the card and performs activation. New activation status is printed on the screen.

If your Activator Card does not include the "SEE Activation (EU+10)" feature, it may have been provided to you in a separate file. The file name includes the module serial number, for example:

*USProdCGT3-01253481317\_SEEUE\_8FD6-2609-F7A2.txt*

This file can be used during activation independently from the Activator Card by selecting option two.

If you plan to use advanced security features in Microchip devices, such as ECC PUF key modes, make sure that the "Elliptic Curve algorithms" and "Elliptic Curve MQV" are activated as shown in the preceeding example.

**Note:** Erasing a module to the factory settings does not remove licensing features enabled using the fet tool. Licensing feature reset can only be done at the factory.

## 3.4 U-HSM Server Provisioning

### 3.4.1 Create the Security World

Security World is created with the new-world utility documented in the *nShield Edge and Solo User Guide for Windows*. The module must be moved to the pre-initialization mode.

The example shown in [Figure 3-5](#) creates a new Security World:

- **-i:** Creates a new Security World.
- **-m:** Specifies ID of the physical HSM module to be added to the Security World.
- **-i:** Creates a new Security World.
- **-Q:** Specifies the minimum number of smart cards needed from the ACS to authorize a feature and the total number of smart cards to be used in the ACS. This example has a total of two cards, with only one card needed to authorize a feature.

- **-c:** Tells the utility what type of key must be used for the new Security World. This example uses the 1024-bit AES key. Options must be considered on the basis of the desired security strength.

During creation of the Security World, the user is prompted to insert and initialize all ACS cards specified by the **-Q** option.

**Figure 3-5. Sample Output from Creation of New Security World**

```
C:\Microsemi\Tools>new-world -i -m 1 -Q 1/2 -c DLf1024s160mRijndael dseeall

Create Security World:
Module 1: 0 cards of 2 written
Module 1 slot 0: empty
Module 1 slot 0: unknown card
Module 1 slot 0:- no passphrase specified - overwriting card
Module 1: 1 card of 2 written
Module 1 slot 0: remove already-written card #1
Module 1 slot 0: empty
Module 1 slot 0: unknown card
Module 1 slot 0:- no passphrase specified - overwriting card
Card writing complete.

security world generated on module #1; hknso = 15d0780e37252b3a1d8bf339a9bd6d779d1991bc
```

**Notes:**

- The values of the **hknso** parameters can be used to uniquely identify the Security World.
- If the module is not in the pre-initialization state, creation of the Security World might encounter an error:

**Figure 3-6. Error Message if Module is Not in Pre-Initialization State**

```
12:46:57 WARNING: Module #1: Module has failed
new-world: module 1 not suitable: module key type Rijndael not supported
new-world: Aborting world operation.
```

The new Security World is a file that is created in the following location: %NFAST\_KMDATA%\local.

**Note:** This location also contains all other related security keys.

Once the Security World is created, the module must be moved to the operational mode.

### 3.4.1.1 Read the Status of the Security World

The status information related to the existing Security World and attached module(s) can be viewed using the **nfkminfo** utility. See the *nShield Edge and Solo User Guide for Windows* for more information.

To use this and most of the commands listed in the sections below, the module must be in the operational mode.

Figure 3-7 shows sample output of the **nfkminfo** utility.

This status information contains several important fields. The **hknso** and **hkm** fields allow the user to uniquely identify the specific Security World.

Once a module is moved to the operational state, the module status read by **nfkminfo** must indicate Usable module state.





The key is installed by simply copying its file *key\_seeinteg\_userdata-signer* located under the SEE folder of the M-HSM server directory to the Security World data folder: %NFAST\_KMDATA%\local.

For example, copy C:\Microsemi\SEE\key\_seeinteg\_userdata-signer%NFAST\_KMDATA%\local

Proper installation of the SEE Signer key can be confirmed using the `nfkminfo -k` command:

**Figure 3-8. Confirming Correct Installation of SEE Signer Key**

```
C:\Program Files (x86)\nCipher\nfast\bin>nfkminfo -k

Key list - 1 key
AppName seeinteg          Ident userdata-signer
```

### 3.4.2.1 Get Hash of SEE Integ Key

The hash of the signer key is used for key identification and referencing key signer during various operations such as creation of the HSM private/public key pairs.

The hash value of the key signer can be retrieved using `nfkminfo`:

**`nfkminfo -k seeinteg userdata-signer | find "hash"`**

See the following example:

```
C:\Microsemi\Tools>nfkminfo -k seeinteg userdata-signer | find "hash"

hash          e0d5146a74ec125f22d4b15088d424b963b88109
```

#### 3.4.2.1.1 `nfkminfo -k seeinteg userdata-signer | find "hash"`

See the example below:

```
hash 72ae19963f2f9a88e49babb09ffb039328c94f3a
```

### 3.4.3 Create NVRAM-based Partition in HSM Module

This step uses the `nvrw-sw` utility to create a storage partition in non-volatile memory of the HSM module for storing information that must be physically uncloneable). [Figure 3-9](#) shows output during NVRAM partition creation.

To run this action:

- The module must be in the operational mode.
- The ACS (admin) cards must be inserted into the card reader according to the quorum number specified during creation of the Security World. Enter the following command to create NRAM:

```
nvrw-sw.exe -a -b 8096 -n udsigner -k seeinteg,userdata-signer
```

The `-b` parameter specifies partition size in bytes. The value of 8096 specifies partition size. This value is fixed in the current version of the M-HSM server.

**Note:** The `-k` parameter must follow the exact format: comma separated values with no spaces.

**Figure 3-9. Creating ENVN Storage Inside HSM Module**

```
C:\>nvrw-sw.exe -a -b 8096 -n udsigner -k seeinteg,userdata-signer
Load Admin Card (for KNV):
Module 1 slot 0: `SEEOCS' #2
Module 1 slot 0: empty
Card reading complete.
```

#### 3.4.3.1 Remove Existing NVRAM Partition

If NVRAM already exists in the module, it can be removed by entering the following command:

**`nvrw-sw.exe -d -n udsigner`**

**Note:** Deletion of the existing NVRAM partition erases all tickets loaded into the module.

### 3.4.4 Configure the U-HSM Server and Tools

This section provides setup instructions for the U-HSM server. It assumes that the directory structure for the U-HSM server was created in the default location C:\Microsemi.

#### 3.4.4.1 Update Server and Tools Configuration

The *M-HSMMaster.config* file contains settings for the M-HSM server. Currently, there are two separate configuration files with the same name and identical content. For the default installation location, the file path is:

- C:\Microsemi\Server\M-HSMMaster.config, and
- C:\Microsemi\Tools\M-HSMMaster.config

Change the following settings as shown:

1. DFK database location—confirm that the location matches actual path:  
<add key=G4HSMAPI.DFKDBPath value=C:\Microsemi\DFKDB />
2. Ticket database location—confirm that the location matches actual path:  
<add key=G4HSMAPI.JobTicketDBPath value=C:\Microsemi\JobDB/>
3. Ticket archive directory:  
<add key=G4HSMAPI.JTPLogArchivePath value=C:\Microsemi\JobDB\JobDBArchive/>
4. M-HSM UUID 32 symbols long hex string obtained from Microchip (00..01 in this example):  
<add key=My\_UUID value=0000000000000000000000000000000000000001/>
5. SEEK Secret key: g4cu-seesk-<U\_HSM\_UUID> (00..01 in this example):  
<add key=G4HSMAPI.CSEEKeyvalue=g4cu-seesk- 00000000000000000000000000000001/>
6. Option to automatically remove tickets pending job file import. This allows the HSM server to automatically remove tickets that do not have an associated job file loaded. By default, this service is off. To use this automatic ticket cleanup service, the user must turn it on and specify the time interval (in seconds) at which the service runs. The same time interval is also used to specify the maximum lifetime of tickets pending job file. This helps free the memory inside the HSM module.  
  
<add key=TicketCleanup.Service value=off/>  
  
<add key=TicketCleanup.TimeoutValue value=86400/> <!--TimeoutValue is in seconds.-->

**Note:** This setting is only meaningful when the M-HSM functionality of U-HSM is used.

### 3.4.5 Generate the ISK key (\*g4see-isk)

The ISK key is a global system key used for internal system functions, such as import U-HSM public keys (seepk and seespk).

Generate the ISK key as follows:

1. Open the command prompt as an administrator and change directory to C:\Microsemi\Tools.
2. Execute the script as shown in [Figure 3-10](#).  
"%nfast\_home%\python\bin\python.exe" C:\Microsemi\Tools\gensymmkey.py -u userdata-signer-i g4see-isk

**Figure 3-10. Sample Output from Generation of ISK Key**

```
C:\Microsemi\Tools>"%nfast_home%\python\bin\python.exe" C:\Microsemi\Tools\gensymmkey.py -u
userdata-signer -i g4see-isk
=====
= Generating symmetric key with ExportAsPlain enabled
=
= KeyIdInt:      simple/g4see-isk
= KeyHash:      7a7895eb 081498b9 0f05d9de 257ae43d 7896dacd
= SEE App KeyIdInt: seeinteg/userdata-signer
= SEE APP KeyHash: 57827118 b0e20b11 2ff56be0 820a6020 7154b8a7
=
= Open group perms: DuplicateHandle|ReduceACL|GetACL
= SEE App perms:      ExportAsPlain|GetAppData
=====

Success! Generated key simple/g4see-isk
```

This is a symmetric encryption key that protects all internal project information such as keys, tickets, security protocol data, and so on, while processing inside the U-HSM.

1. Open the command prompt as an administrator and change directory to `C:\Microsemi\Tools`.
2. Execute the following command (see the sample output in [Figure 3-11](#)).

**CU\_MASTER\_HSM\_UUID** is a user-selected master key UUID. This UUID must be set in the settings of the application using this HSM server. Length: 40 hex symbols. This key must be unique within the Security World used by this HSM.

[illegible]

This step configures the system to load firmware into the HSM module. The `loadsee-setup` command sets up paths to the SEE Machine files. The following figure shows the sample output.

```
loadsee-setup --setup -ml -M C:\Microsemi\SEE\U-HSMsee-edg.sar -U C:\Microsemi\SEE\userdata.sar -p
g4cusee --force

Module #1 has an existing configuration:

Module #1:
  Machine file:           C:\Microsemi\SEE\U-HSMsee-edg.sar
  Encryption key:
  Signing key hash:
  Userdata file:         C:\Microsemi\SEE\userdata.sar
  WorldID published object: g4cusee
  Postload helper:
  Postload args:

Erase this configuration? (yes/no): yes
Module #1 new SEE configuration saved, new configuration follows:

Module #1:
  Machine file:           C:\Microsemi\SEE\U-HSMsee-edg.sar
  Encryption key:
  Signing key hash:
  Userdata file:         C:\Microsemi\SEE\userdata.sar
  WorldID published object: g4cusee
  Postload helper:
  Postload args:
```

Module Type	Firmware File
nShield Edge	M-HSMsee-edg.sar

.....continued	
Module Type	Firmware File
nShield Solo	M-HSMsee-ppc.sar

The next step is to confirm that the SEE Machine firmware has loaded successfully. Use the *GetLoadingSEEName.bat* script in the Utils folder, as shown in [Figure 3-13](#). The SEE Machine firmware is loaded when the `-MemAllocUser` variable reads a non-zero value.

**Note:** Actual loading of the SEE firmware after setting it up with the `loadsee-setup` command might take a few minutes for the slower Edge module. During that period, `-MemAllocUser` remains 0.

**Figure 3-13. Confirming Loading of SEE Firmware**

```
C:\Microsemi\Tools>C:\Microsemi\Utils\GetLoadingSEEName.bat

WorldID = 'g4cmsee'
-MemAllocUser          933888
If MemAllocUser is 0, SEE is not loaded
```

If the module cannot load the firmware, check the correctness of the parameters specified during the `loadsee-setup` step and repeat the attempt, making sure the proper module type is selected.

### 3.4.8 Generate SEE Private/Public Encryption and Signing Keys

The SEE key pairs are created to provide secured exchange of information between U-, M-, and MFG-HSM servers. One pair of keys is used for encryption and decryption and the other pair is used for creating and verifying digital signatures.

#### 3.4.8.1 Obtain Customer UUID from Microchip

Customer UUID (U\_UUID) is a 32-symbol hex string identifier that is assigned by Microchip through the Microchip portal (see the [Secure Production Programming Solution \(SPPS\) User Guide](#) for details).

Example of the customer UUID: 00000000000000000000000000000001.

**Note:** UUID must have all lower case characters.

Private/Public SEE keys must use the Customer UUID assigned by Microchip.

Once the UUID value is available, update the tag in both *U-HSMMaster.config* files, under the server and tools directories, as explained in section [Update Server and Tools Configurations](#).

#### 3.4.8.2 Generate the U-HSM Private Keys

1. Open the command prompt as an administrator and change directory to `C:\Microsemi\Tools`.
2. Create the SEE Key for encryption using the `M-HSMGenImp` utility:  
**U-HSMGenImp -p g4cusee -g -c <key\_signer\_hash> -n g4cu-seesk-<U\_HSM\_UUID> U\_HSM\_UUID:**  
Microchip-assigned UUID

The "-c" flag must be used as shown in this example. It corresponds to the userdata-signer key installed during the installation of the SEE Integ key (see section [Install the SEE Integ Key](#)).

The following figure shows a sample:

**Figure 3-14. Creating SEE Key for Encryption and Decryption**

```
C:\Microsemi\Tools>U-HSMGenImp -p g4cusee -g -c 72ae19963f2f9a88e49babb09ffb039328c94f3a -n g4cu-seesk-00000000000000000000000000000001
Starting to generate SEE RSA key...
SEE RSA key: g4cu-seesk-00000000000000000000000000000001...generated
```

The created key is stored in the Security World directory as follows (with the highlighted part corresponding to the customer UUID):

```
key_simple_g4cu-seesk-00000000000000000000000000000001
```



- Microchip IHP, if used

### 3.4.9 Install the HSM Module License File

The license file is issued by Microsemi and binds the UUID used by Security World and one or more HSM modules. Once available, this file must be put in the Server and Tools directories of the current installation.

### 3.4.10 Open the Server Port

To make the U-HSM server accessible to the clients running outside the host operating system, the firewall rules must be changed to open 8000.

### 3.4.11 Start the U-HSM Server

The U-HSM server can be executed from the command line or as a Windows service.

#### 3.4.11.1 Command Line Mode

While it can be used for normal server operation, the command line mode is best during initial U-HSM server setup and provisioning, because it prints out error messages directly to the screen and makes it easy for the user to start and stop U-HSM server during this process. However, this mode can only be used under the administrator account.

#### 3.4.11.2 Service Mode

The service mode is designed for normal U-HSM server operation and can be used under the non-administrator account. The server configuration must be performed by a user with administrator privileges.

While a non-administrator user has restricted access to the system resources and services, the U-HSM Control Panel application allows a non-administrator user to perform certain administration tasks of the U-HSM server.

For more details about service mode of execution and setup instructions, see section [Running U-HSM Server as a Service](#).

### Using U-HSM Server in Command Line Mode

The following steps require a user account with administrative privileges.

The U-HSM server executable *U-HSMServer.exe* is located in the Server directory:.

For example, `C:\Microsemi\Server\U-HSMServer.exe`

1. Start the console window: type **cmd** in the Windows Start Menu window and right-click Command Prompt desktop app. Then, choose **Run as administrator**.
2. In the open console window, navigate to the "server" directory and type **mu-hsmserver.exe**.

Upon startup, the server initializes a session with the HSM module. The following figure shows the output:

**Figure 3-18. U-HSM Server is Initializing Session With HSM Module**

```
C:\Microsemi\Server>U-HSMServer.exe
The service is running.
Info: Ticket cleanup service is running.
Initializing session...
Session is initialized.
Press <ENTER> to exit.
```

If the SEE machine firmware load is still in progress, the session initialization waits for the load to finish. The SEE machine firmware load takes place in the following cases:

- Turning on or restarting the PC hosting the U-HSM server.
- Restarting the nCipher nFast Server service that handles HSM modules.
- HSM module reinitialization through issuing Security World commands, such as `nopclearfail`.
- Setting up or changing settings for the SEE firmware load (for example, `loadsee-setup`).

**Note:** When a session is waiting for the SEE firmware to load, session initialization time depends on the module type, and might vary from one minute for a Solo module to four minutes for an Edge module, respectively.

Sample output after session initialization is finished after waiting for SEE firmware load, as shown in [Figure 3-19](#).

**Figure 3-19. U-HSM Server is Initialized**

```
C:\Microsemi\Server>U-HSMServer.exe
The service is running.
Info: Ticket cleanup service is running.
Initializing session...
Waiting for the SEE firmware to load..
Session is initialized.
Press <ENTER> to exit.
```

The session can be terminated by pressing the **Enter** key:

**Figure 3-20. U-HSM Server is Stopped**

```
C:\Microsemi\Server>U-HSMServer.exe
The service is running.
Info: Ticket cleanup service is running.
Initializing session...
Session is initialized.
Press <ENTER> to exit.

Session is stopping...
Server is stopped.
```

**Notes:**

- During the session, the server produces log output of the HSM invocations into:  
C:\ProgramData\G4KMSServer\G4KMSSHMAPI.log.
- Any error information outputs into:  
C:\Microsemi\Server\U-HSMServer.log

Both the log files are important during failure analysis and can be sent to Microchip technical support for analysis.

### 3.4.12 Key Exchange with Microchip

Before the U-HSM server can receive data from the Microchip HSM, both HSMs need to exchange the public keys.

The Microchip MFG-HSM needs to import the U-HSM public encryption key so that it can securely send encrypted data to the U-HSM. See section [Export the U-HSM Public Keys](#), which explains how to export this public encryption key.

The U-HSM needs to import the Microchip MFG-HSM public verify key so that it can authenticate the digitally signed files it receives from Microchip. See section [Import the Microsemi HSM Public Verify Key](#), which explains how to import the Microchip HSM public key.

See the Microchip portal for all operations listed in this step.

#### 3.4.12.1 Import the Microchip HSM Public Verify Key

Once the customer receives the Microchip HSM public verify key, they need to import it into the U-HSM. Use the U-HSMGenImp utility for this type of import:

pkg-g4mf-seespk-<hex>: This is the file on the disk with the key to be imported for verifying signature.

For example: pkg-g4mf-seespk-121187e7

The resulting files are created in the Security World key folder. Information about these keys can be viewed using the `nfkminfo -k` command.

Example of the resulting key file:

key\_simple\_g4mf-seespk

**Figure 3-21. Starting U-HSM Server**

```
C:\Microsemi\Tools>U-HSMGenImp -p g4cusee -i -n g4mf-seespk -a pkg-g4mf-seespk-121187e7 -k g4see-isk
RedeemTicket successful
Starting to import SEE public key...
Vimport successful
SEE public key, g4mf-seespk, imported successfully
```

### 3.4.13 Obtain the DFK Database from Microchip

For each customer, Microchip generates a database of the diversified factory keys (DFK DB) for all devices they use. Those keys are stored in encrypted form. The key exchange step as mentioned in section [Key Exchange with Microchip](#) must be completed before the DFK database can be obtained.

#### 3.4.13.1 Request the DFK Database

Send the DFK DB request to Microchip. See the chip portal for information about how this can be done.

The file with the DFK DB has the extension DFK DB. This database needs to be imported (merged into the U-HSM server).

DFK DB file name example: DFKUPD- 00000000000000000000000000000001-20150115.DFKDB

#### 3.4.13.2 Import (Merge) the DFKDB into the U-HSM Server

The import is done using U-HSMDFKDBMerger utility in the Tools folder. The "-f" flag must be used for the first import. This creates a new database file.

For subsequent DFKDB imports, the "-f" flag must not be used. If a re-import of the DFK DB is necessary, use the "-ForceMerged" flag.

The import must be executed in the DFKDB location specified in the configuration file (see section [Update Server and Tools Configuration](#) for details).

Import the DFKDB as follows:

1. Go to the DFKDB directory as specified in the configuration file. For the default installation path:  
`cd C:\Microsemi\DFKDB.`
2. For the first time import, this directory should be empty, because U-HSM DFK DB has not yet been created.
3. Copy the DFK DB file received from Microchip to C:\Microsemi\DFKDB.  
Example of a file DFK DB file name:

DFKUPD- 00000000000000000000000000000001-20150115.DFKDB.

4. Execute the merge as shown in the following example, specifying your DFK DB file name.
  - For the first time merge, use the "-f" flag.
  - To force a merge again for the same file, use the "-ForceMerged" flag.

```
C:\Microsemi\Tools\U-HSMDFKDBMerger.exe -f DFKUPD-00000000000000000000000000000001-20150115.DFKDB.
```

5. Confirm that the first time merge was successful. The DFKDB directory shows that a new file has been created. The file name follows the example (the highlighted field is the same as your customer UUID):  
DFK- 00000000000000000000000000000001.DFKDB.

The following figure shows a sample output:

**Figure 3-22. First time Import of DFK Database Into U-HSM**

```
C:\Microsemi\DFKDB>C:\Microsemi\Tools\U-HSMDFKDBMerger -f DFKUPD- 00000000000000000000000000000001-20150115.DFKDB
G4DFKDBMerger Starting
DFKUpdate (DFKUPD-00000000000000000000000000000001-20150115.DFKDB) is merged into DFK-00000000000000000000000000000001.DFKDB successfully
```



### 3.4.13.3 Import Manufacturing Keys from the DFK DB

This step imports device-type specific keys that are used for bitstream generation and other tasks. These keys are part of the DFK DB. The U-HSMImportMFKeys utility is used for the key import in the following format:

U-HSMImportMFKeys <import\_key\_file> import\_key\_file: file with the DFK DB

For example, DFKUPD- 000000000000000000000000000000001 -20150115.DFKDB

**Figure 3-23. Import for MFG Keys**

```
C:\Microsemi\DFKDB>C:\Microsemi\Tools\U-HSMImportMFKey DFKUPD-00000000000000000000000000000001-20150115.DFKDB
Imported MF 2 keys successfully
```

### 3.4.14 Import U-HSM Server's Public Keys to Enable M-HSM Function

The U-HSM server needs to import its public keys to execute its jobs or send jobs for execution to another U-HSM server running the same Security World.

Use the U-HSMGenImp utility for this type of import:

**U-HSMGenImp -p g4cusee -i -n g4cu-seepk-<U\_UUID> -a pkg-g4cu-seepk--<U\_UUID><HEX VALUE> -k g4see-isk**

**U-HSMGenImp -p g4cusee -i -n g4cu-seespk-<U\_UUID> -a pkg-g4cu-seespk-<U\_UUID><HEX VALUE> -k g4see-isk**

U\_UUID: 32 symbols long UUID of this U-HSM server

For example, 00000000000000000000000000000001.

This U\_UUID is used by the client application (JobManager) to refer to this key. Therefore, it needs to be set up in the application settings.

pkg-g4cu-seepk-<U\_UUID><HEX VALUE>: This is the container file on the disk with the encryption key to be imported.

For example, pkg-g4cu-seepk-00000000000000000000000000000001-8eb9680a.

pkg-g4cu-seespk-<U\_UUID><HEX VALUE>: This is the container file on the disk with the signature verification key to be imported.

For example, pkg-g4cu-seespk-00000000000000000000000000000001-0754c1eb. The resulting files are created in the Security World folder.

Example of the resulting key files:

key\_simple\_g4cu-seepk-00000000000000000000000000000001 and key\_simple\_g4cu-seespk-00000000000000000000000000000001.

Information about these keys can be viewed using the nfkmInfo -k command.

The following figure shows a sample output:

**Figure 3-24. Importing U-HSM Public Keys**

```
C:\Microsemi\Tools> U-HSMGenImp -p g4cusee -i -n g4cu-seepk-00000000000000000000000000000001-a pkg-
g4cu-seepk-00000000000000000000000000000001-8eb9680a -k g4see-isk
```

```
RedeemTicket successful
Starting to import SEE public key...
Vimport successful
SEE public key, g4cu-seepk-00000000000000000000000000000001, imported successfully
```

```
C:\Microsemi\Tools> U-HSMGenImp -p g4cusee -i -n g4cu-seespk-
00000000000000000000000000000001-a pkg-g4cu-seespk-000000000000000000000000000001-0754c1eb -k
g4see-isk
```

```
RedeemTicket successful
Starting to import SEE public key... Vimport successful
SEE public key, g4cu-seespk-00000000000000000000000000000001, imported successfully
```

### 3.4.15 Import the M-HSM Public Keys

The U-HSM server needs public keys for every M-HSM, including the IHP that executes jobs from this U-HSM server, to send information to it in a secured way and to verify the authenticity of the data.

Use the U-HSMGenImp utility for this type of import:

**U-HSMGenImp -p g4cusee -i -n g4cm-seepk-<M\_UUID> -a pkg-g4cm-seepk-<M\_UUID><HEX VALUE> -k g4see-isk**

**U-HSMGenImp -p g4cusee -i -n g4cm-seespk-<M\_UUID> -a pkg-g4cm-seespk-<M\_UUID><HEX VALUE> -k g4see-isk**

**M\_UUID:** 40 hex characters long UUID for the imported M-HSM public key.

For example, 002

The **M\_UUID** is used by the client application (JobManager) to refer to this key. Therefore, it needs to be set up in the application settings.

**pkg-g4cm-seepk-<M\_UUID><HEX VALUE>:** This is the container file on the disk with the encryption key to be imported.

For example, pkg-g4cm-seepk- 002-2db19054

**pkg-g4cm-seespk-<M\_UUID><HEX VALUE>:** This is the container file on the disk with the signature verification key to be imported.

For example, pkg-g4cm-seespk- 002- f5544785

The resulting files are created in the Security World folder. Information about these keys can be viewed using the **nfkminfo -k** command.

Example of the resulting key files:

**key\_simple\_g4cm-seepk-** 002 **and** **key\_simple\_g4cm-seespk-**002

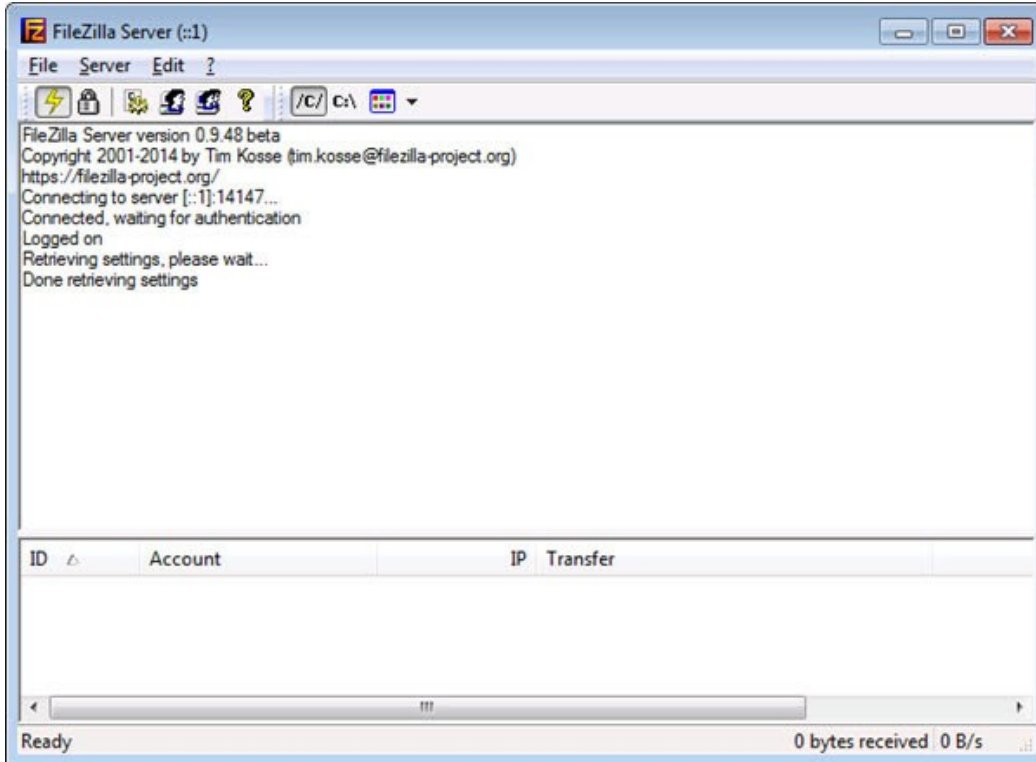
Figure 3-25 shows a sample output.



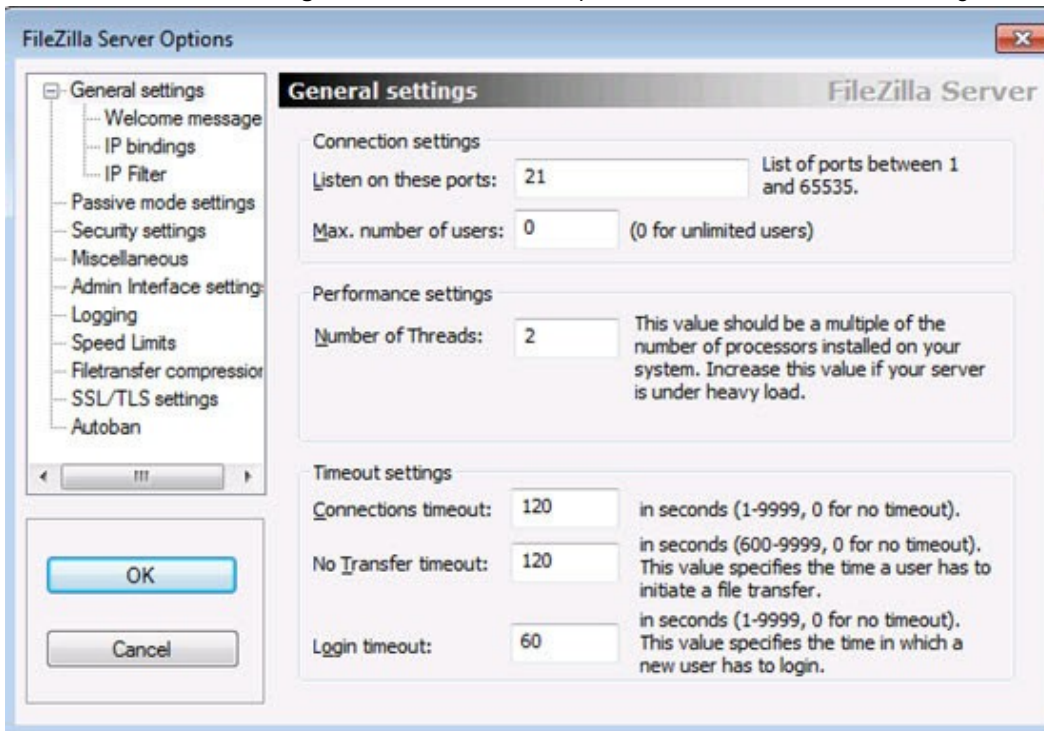
## Initial U-HSM Server Installation and Setup

The FTP port is set to 21. The home directory is set to C:\Microsemi\ftp, and the ticket DB (/JobDB) is set to C:\Microsemi\JobDB.

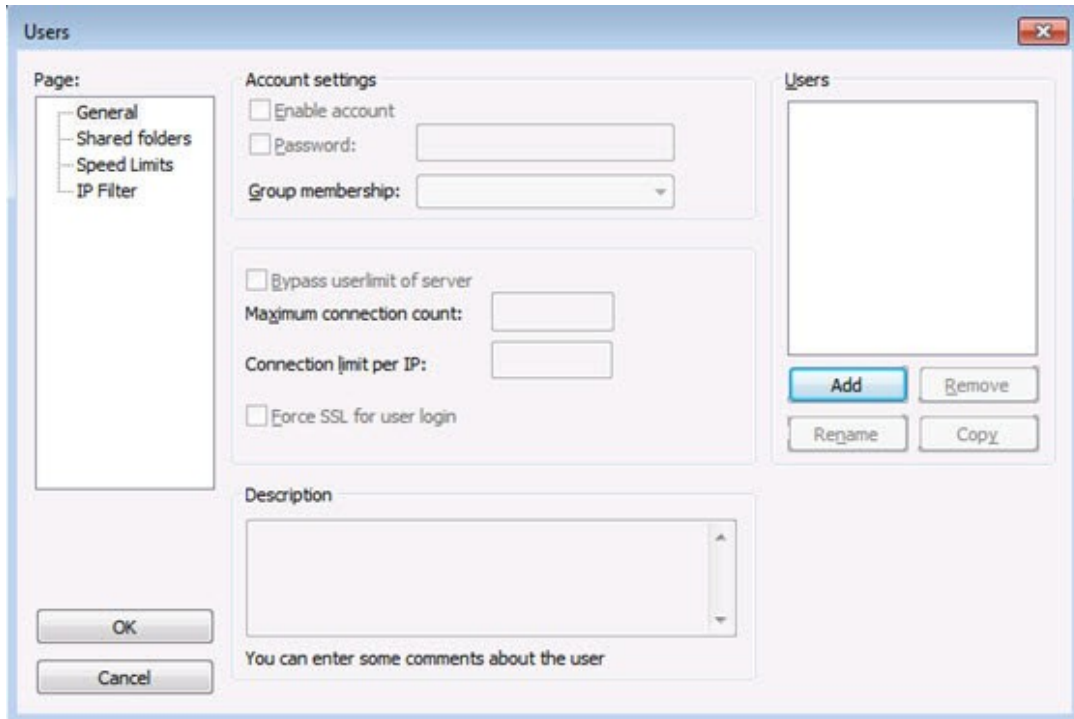
1. Open the FileZilla Server application.



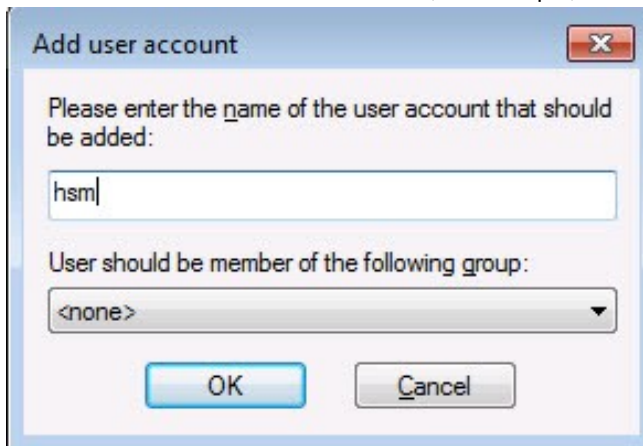
2. Go to **Menu > Edit > Settings**, make sure the default port is set to 21, and close the dialog box.



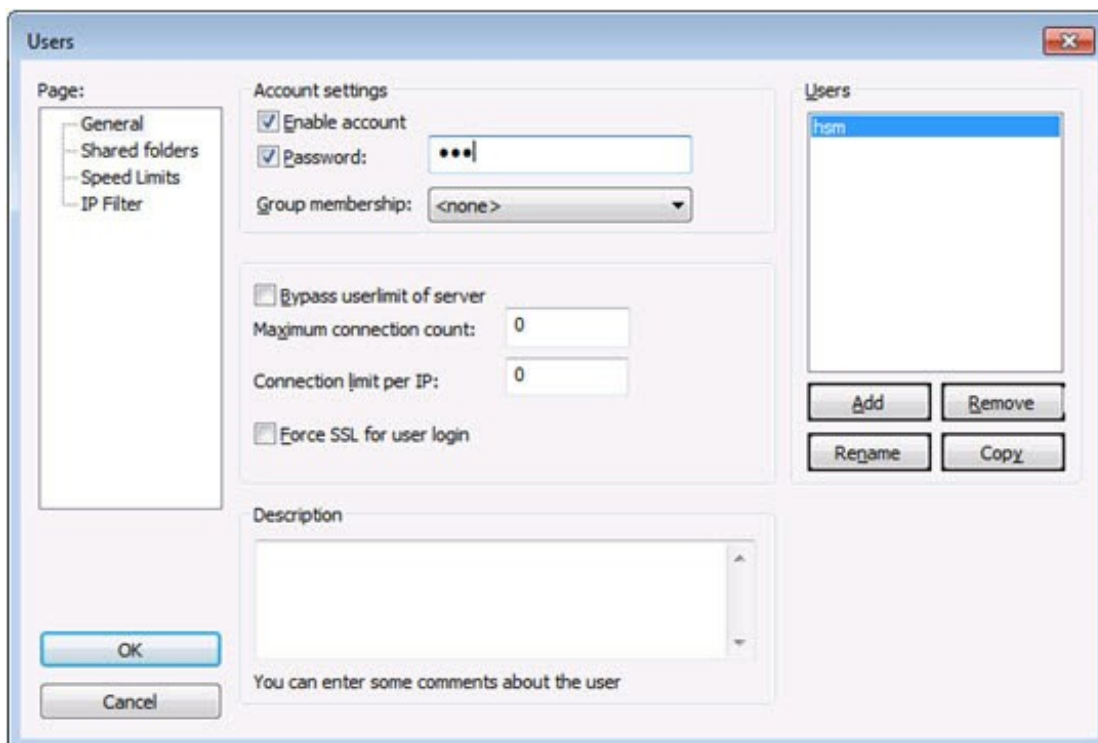
3. Open user settings: **Menu > Edit > Users**.



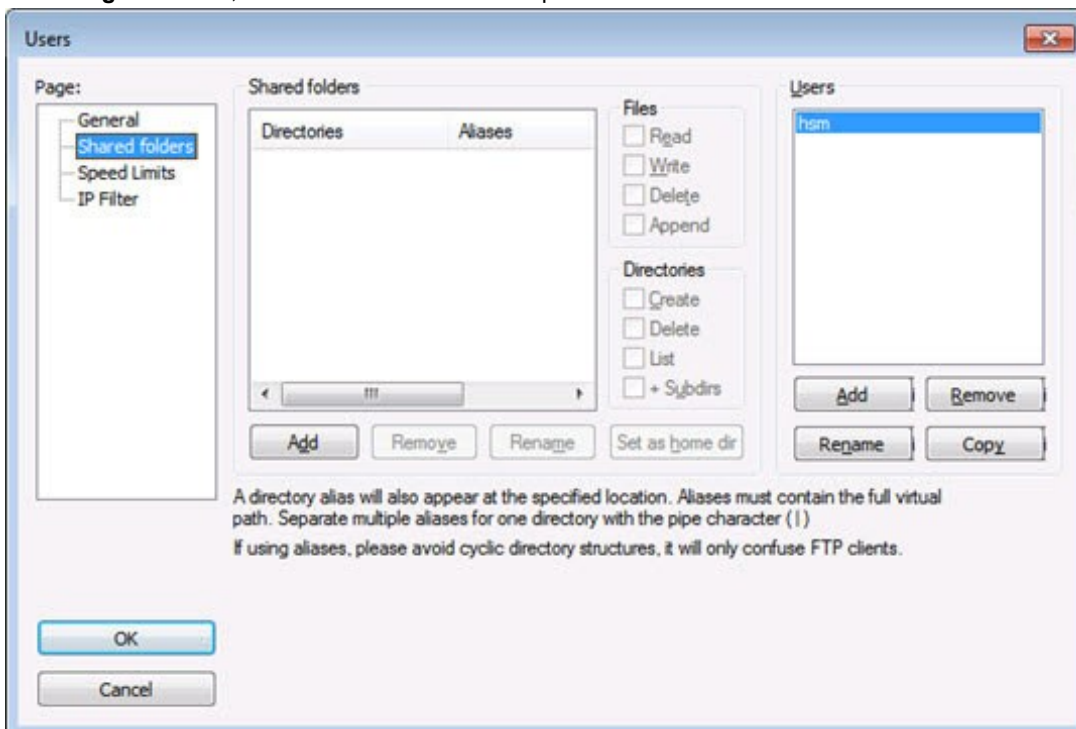
- Click **Add** and enter the new user name, for example, **hsm**.



- Click **OK**.
- In the Users dialog box, select the Password check box and enter your password (for example, **hsm**).

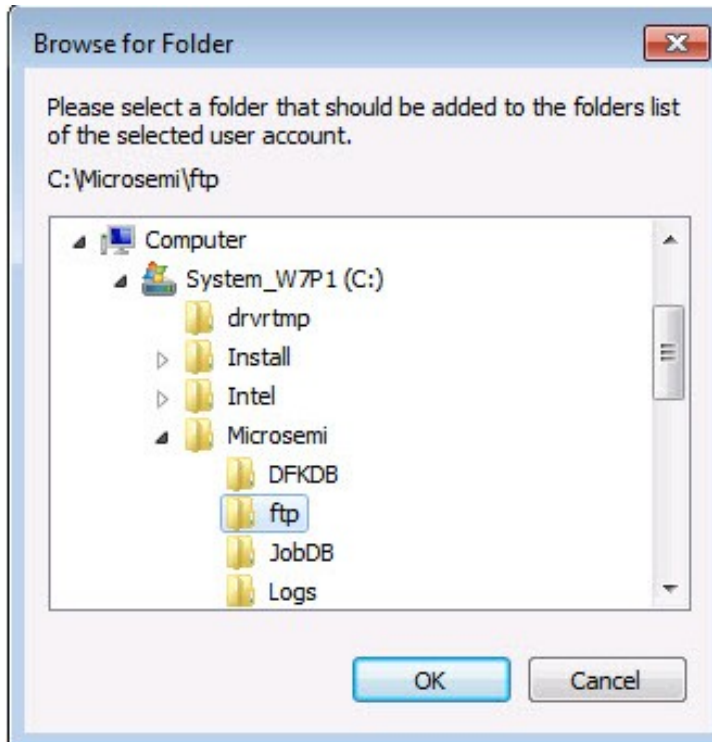


7. In the **Page** tree view, select the **Shared folders** option.

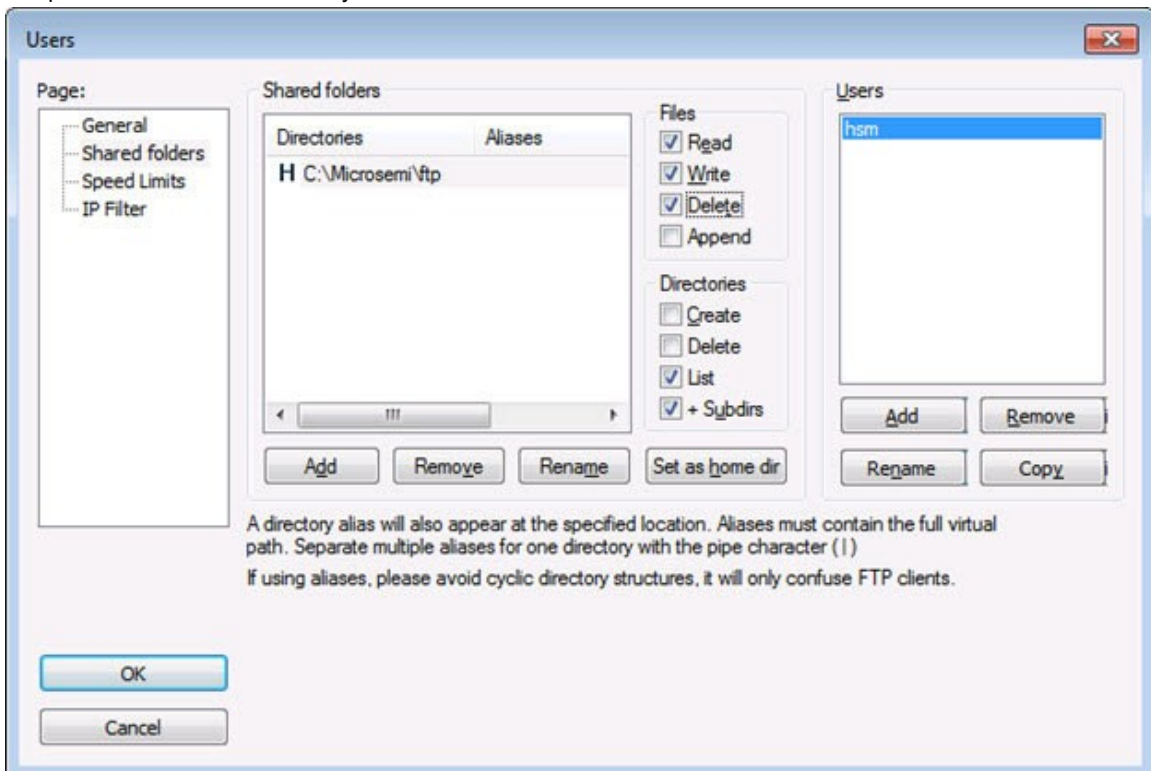


8. Click **Add**.
9. Navigate to the C:\Microsemi\ftp folder.
10. Click **OK**.

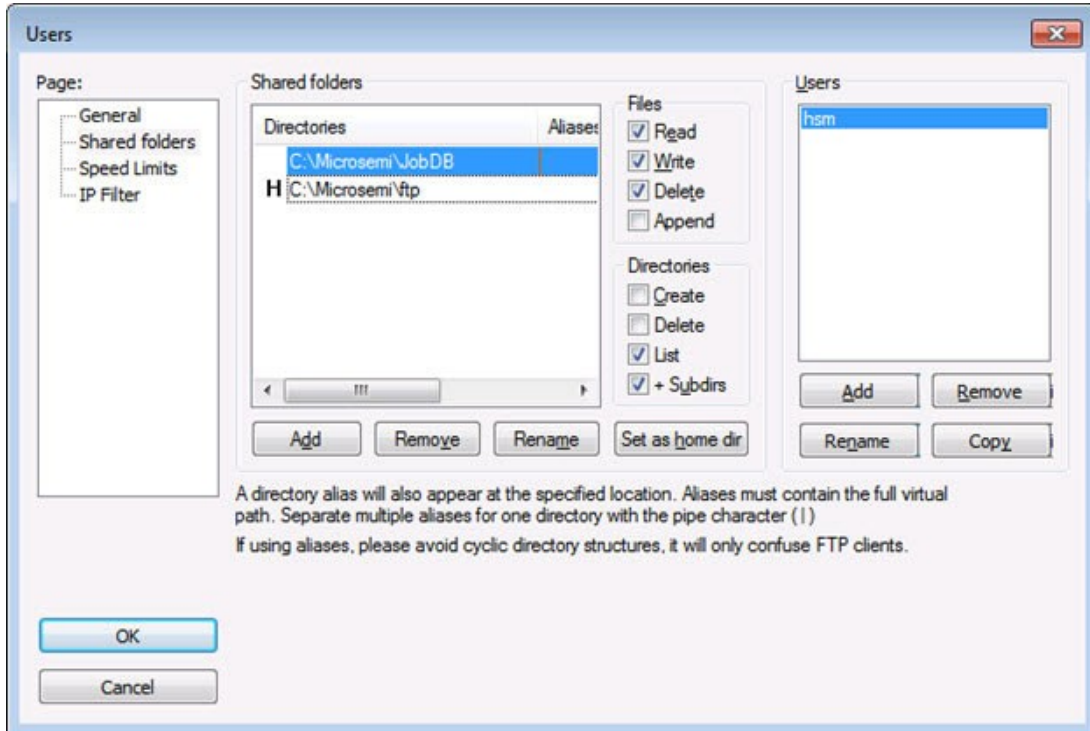




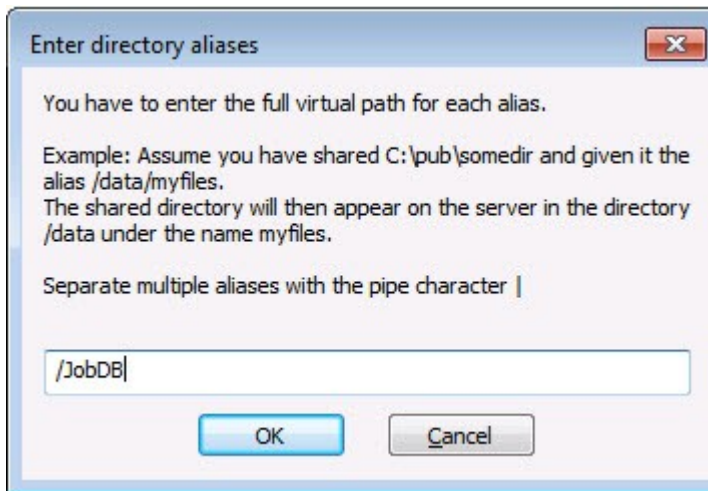
11. Set permissions for this directory to Read/Write/Delete.



12. Repeat this step and add the location of the ticket database.

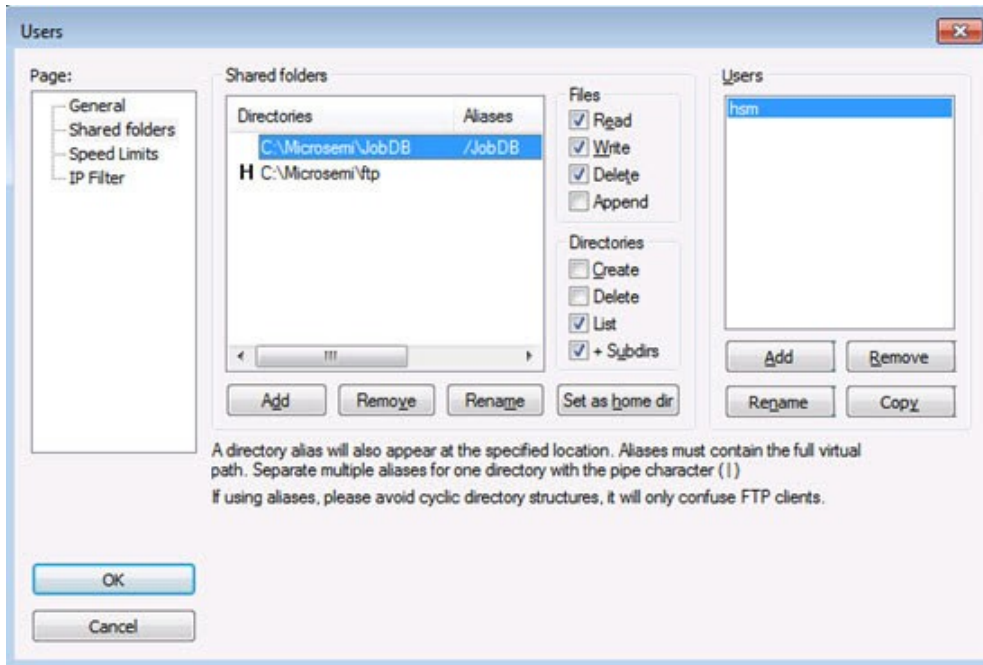


13. Make sure that the JobDB directory has Read/Write/Delete permissions.
14. Right-click the JobDB entry and choose **Edit aliases**.
15. Set alias as "/JobDB".



16. Confirm that the home directory is set to the ftp folder and alias to the JobDB, as shown in the following figure.





17. Confirm that the FTP server functions as expected. The following figure shows an example.

**Figure 3-26. Checking Setup of FTP Server**

```
C:\Microsemi\DFKDB>ftp sjsocprgw7p1

Connected to sjsocprgw7p1.microsemi.net.
220-FileZilla Server version 0.9.48 beta
220-written by Tim Kosse (tim.kosse@filezilla-project.org)
220 Please visit https://filezilla-project.org/
User (sjsocprgw7p1.microsemi.net:(none)): hsm
331 Password required for hsm
Password:
230 Logged on

ftp> ls
200 Port command successful
150 Opening data channel for directory listing of "/"
JobDB
226 Successfully transferred "/"

ftp> cd JobDB
250 CWD successful. "/JobDB" is current directory.
ftp> ls
200 Port command successful
150 Opening data channel for directory listing of "/JobDB"
226 Successfully transferred "/JobDB"
ftp>
```

18. Similarly, create the /JobDBArchive FTP location at the same level as /JobDB and pointing to C:\Microsemi\JobDB\JobDBArchive.

## 4. Running U-HSM Server as a Service

This section describes how to run U-HSM as a service.

The U-HSM server can be set up to run as a Windows service. This mode allows a non-administrator user to operate the server once service configuration is done under the administrator account.

In service mode, all interactions with the U-HSM server are done via the U-HSM control panel application.

### 4.1 Service Setup

The service setup and configuration steps require administrator privileges. Before starting service configuration, make sure that the *U-HSMServer.exe* is not running.

#### 4.1.1 Create Service Entry

Open a command prompt in As Admin mode: type **cmd** in the Windows Start menu, right-click the **cmd** entry, and choose **As Admin** mode.

Create a service entry called U-HSMServer, as per the following the example:

```
C:\Microsemi\SEE>sc create U-HSMServer binPath= "C:\Microsemi\server\u-hsmserver.exe"
DisplayName= "User HSM Server"
```

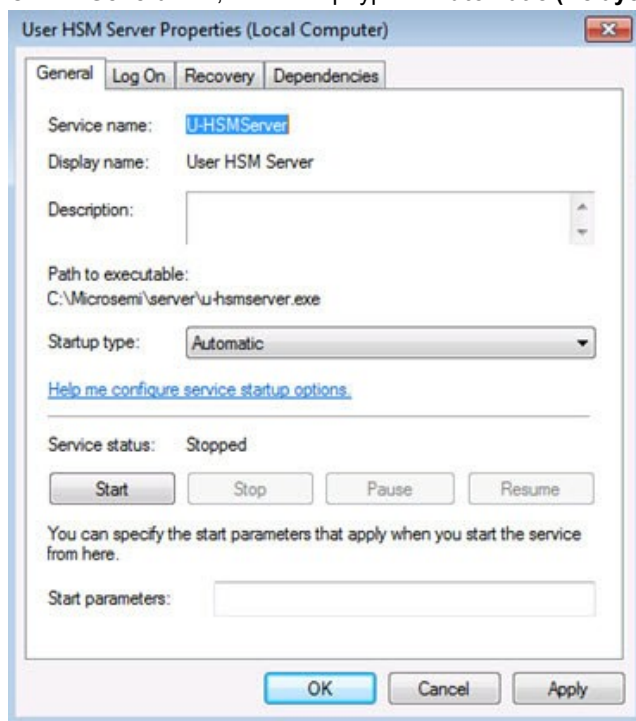
```
[SC] CreateService SUCCESS
```

**Note:** Use the following command to delete this entry: `sc delete U-HSMServer`

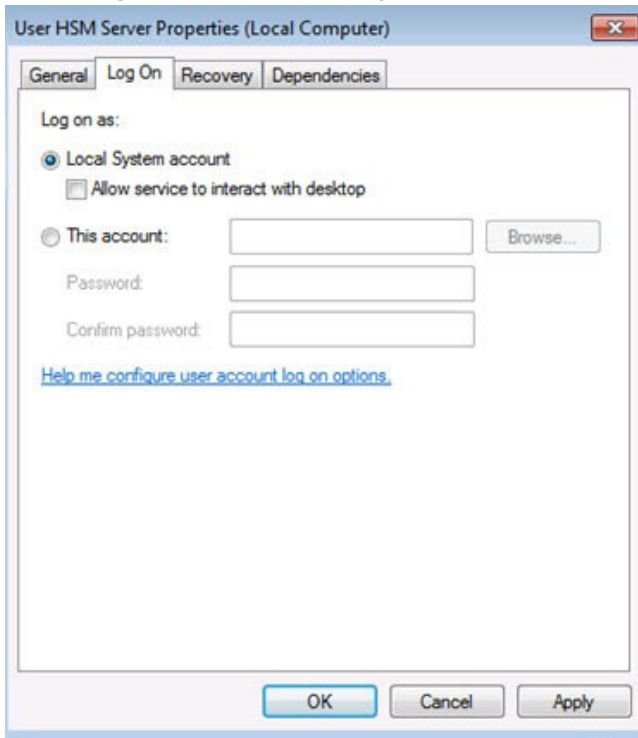
#### 4.1.2 Update Service Properties

To update service properties, perform the following steps:

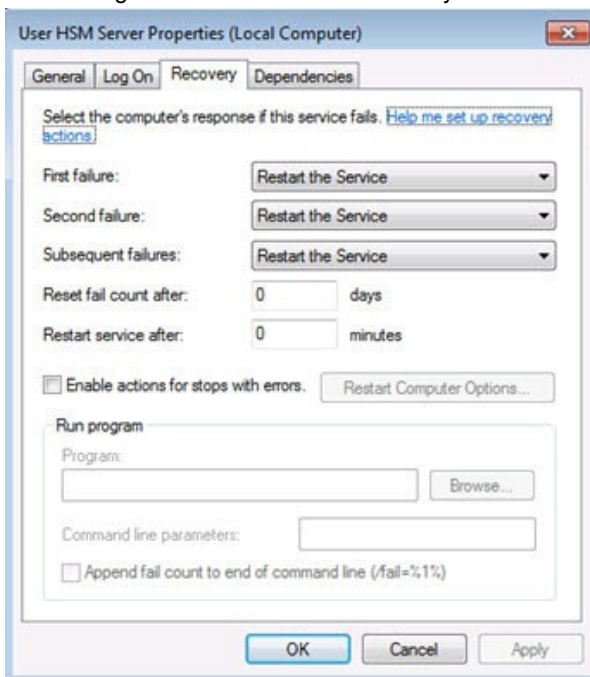
1. Open the Control Panel and go to **Services**. Find the **Manufacturer HSM Service** entry and open the service properties windows.
2. On the **General** tab, set Startup type to **Automatic (Delayed Start)**.



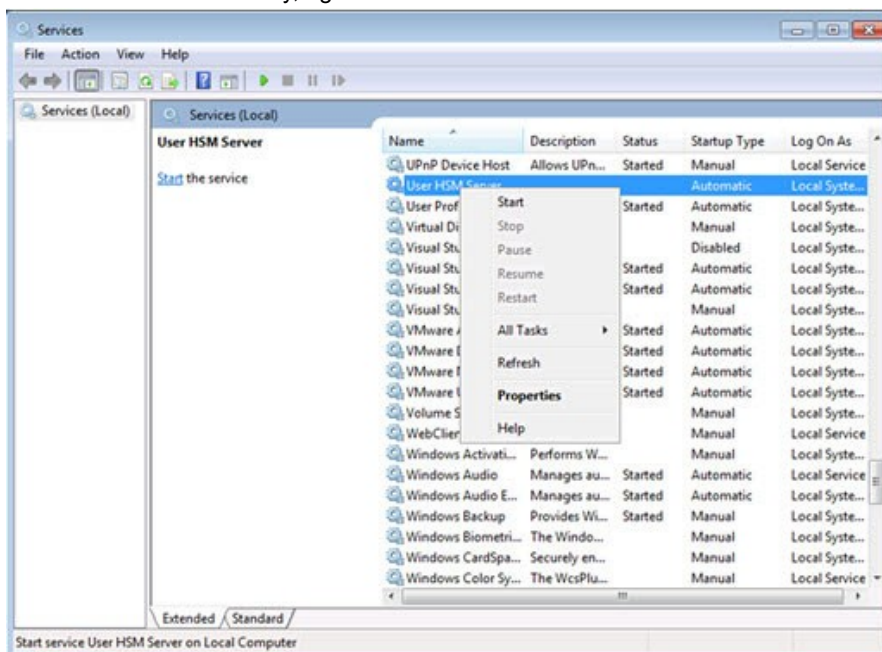
- On the **Log On** tab, make sure "Log On as" is set to **Local System account**.



- On the **Recovery** tab, set all failure recovery fields to **Restart the Service**, as shown in the following figure. This setting tells Windows to automatically restart the server, if an error occurs.



- When completed, click **OK** and close the dialog box. Then, attempt to manually start the server: navigate to the User HSM Server entry, right-click and choose **Start**.



- Once service is confirmed, you can reboot the PC and log in using a non-administrator user account.

**Note:** Under the non-administrator account, you can only observe service status using the Windows Services tool.

## 4.2 U-HSM Control Panel Application

The control panel application can be used under admin and non-admin user accounts. The control panel application provides the following functions:

- Observe status of U-HSM server
- Restart service for error recovery
- Stop and Start active session with the HSM module
- Export U-HSM server activity log

### 4.2.1 Setup

The U-HSM control panel application is located in the U-HSMControlPanel folder.

The application executable *U-HSMControlPanel.exe* can be started like any Windows application and does not require admin privileges to operate.

For convenience, it can be added to the Windows start-up applications as a shortcut placed in the Windows Startup folder.

For example, `C:\Users\hsm_nonAdmin_user\AppData\Roaming\Microsoft\Windows\Start Menu\Programs\Startup`

Once added to the startup applications, the U-HSM control panel application is automatically started by Windows upon its start up.

**Note:** Upon initial startup, the application registers its icon in the Windows registry. Once registered, the application executable name or path cannot be changed without removing that entry in the Windows registry. See the *ReadMe.txt* file for the cleanup instructions.

Only one running instance of the application is allowed at a time.

### 4.2.2 Notification Icon

The application appears as an icon in the Windows notification area.

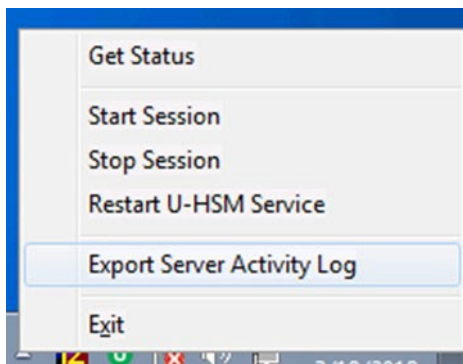


Depending on the status of the U-HSM server, the icon of the U-HSM control panel application can be one of the following:

- **Green:** Indicates server normal working state.
- **Red:** Indicates that the connection with the server is established, but the session with the HSM module is not active. It can be either in the Starting, Stopping, or Not Running state.
- **Gray:** Indicates that the connection with the server cannot be established. In most cases, this means that the service is not running.

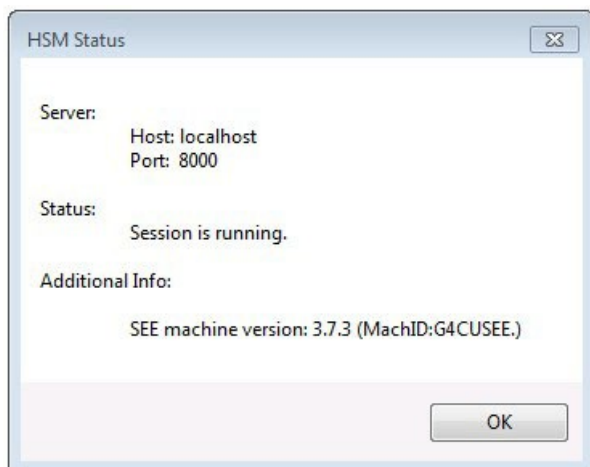
In addition to color coding, the server state is indicated in the tooltip that appears when the cursor hovers over the icon.

Left-clicking the application icon opens the context menu, as shown in the following figure.



### 4.2.3 Get Status

This option indicates U-HSM connection state, state of the session with the HSM module, and version of the SEE firmware running on the HSM module, if a session with the HSM module is active.



### 4.2.4 Start and Stop Session

These two options control the active session state with the HSM module inside the U-HSM server application. The session with the HSM module automatically starts with the startup of the U-HSM server. Upon its startup, the session loads information from the server configuration files and establishes connection with the SEE machine running in the HSM module. If the SEE firmware is still being loaded, the HSM server waits until the firmware load is finished.

Stopping the session allows the user to manipulate HSM server settings and HSM module hardware, without having to stop U-HSM Service.

**Note:** Upon receiving a session stop request, the HSM server stops accepting new client requests, while allowing requests in progress to complete.

### 4.2.5 Restart U-HSM Service

This option allows user to restart U-HSM server service to recover from certain errors. This eliminates the need to restart the PC.

**Note:** This action might terminate client requests currently in progress and must be used with caution. It might be a good practice to attempt stopping a session first.

### 4.2.6 Export Server Activity Log

This option retrieves the log file located in the sever directory and exports it to the file specified by the user. Information in this log file can be used to analyze current server activities.

### 4.2.7 Exit

This option terminates the U-HSM control panel application session. It does not have any impact on the U-HSM server operation, and can be restarted by a non-administrator user at any time.

## 5. U-HSM Reconfiguration and Post-Installation Actions

This chapter provides instructions for the setup and maintenance actions that can be performed on an installed and provisioned U-HSM.

### 5.1 HSM Module Replacement

#### Notes:

- Only one module at a time can be connected to U-HSM.
- If the old module is removed from the U-HSM, unfinished programming jobs are not able to proceed.

For jobs-in-progress, certain ticket information is stored inside the NVRAM of the hardware module, which makes job tickets physically uncloneable.

#### 5.1.1 Remove the Old HSM Module

Physically disconnect the old module. The U-HSM Security World contains a file with the module information. While this file can co-exist with the files for other modules added to the system, the user can choose to remove it for security reasons. The file is located in the Security World directory: %NFAST\_KMDATA%\local directory. The file name follows the pattern "module\_<module\_ESN>". If needed, the user can also remove the licensing file from the Server and Tools directories: <U\_UUID>.g4sl

**Note:** The old HSM module was used to create any public encryption or signing keys, then the Warrant File for this module will be needed to export those keys. You may choose to keep the old module Warrant File to enable public key export or remove it in order to disable this function.

#### 5.1.2 Set Up a New HSM Module

After the module is installed on the system, it must be added to the Security World and set up to load SEE Machine firmware per module type.

##### 5.1.2.1 Module Installation

1. Install a new HSM module (see section [HSM Hardware Module Installation](#)).
2. Install the Microchip-issued HSM module license (see section [Install the HSM Module License File](#)).
3. Install the module warrant file (see section [HSM Hardware Module Installation](#)).

##### 5.1.2.2 Add the HSM Module to the Security World

The following steps require the Administrative Card Set (ACS). The number of required cards and their respective passphrases depend on the settings specified during Security World creation (see section [Create the Security World](#))

1. Set module to the Pre-Init state.
2. Add the HSM module to the security world using the new-world command: `new-world --program --no-remotesetshare-cert -m 1.`
3. Create a new NVRAM file (see section [Create NVRAM-based Storage in the HSM Module](#)).
4. Set module to the operational state.
5. Setup HSM module to load the SEE Machine firmware: follow instructions in section [Set Up the SEE Machine Firmware for Loading into the HSM Module](#).

### 5.2 Key Exchange with Microchip

Follow the instructions provided in section [Key Exchange with Microchip](#).

### 5.3 Import the Public Keys of M-HSM

Follow the instructions provided in section [Import the M-HSM Public Keys](#).

### 5.4 Export the Public Keys for Sending to M-HSM

Follow the instructions provided in section [Export the U-HSM Public Keys](#).

### 5.5 Create the DFK DB and Manufacturing Keys for M-HSM

Follow the instructions provided in section [Prepare and Send Device Data to the M-HSM](#).

### 5.6 Upgrade the HSM Module Firmware

This step shows how to upgrade HSM module firmware (not the SEE Machine firmware). The firmware upgrade might be necessary in the following cases:

- The HSM module has a firmware revision that is not supported by the JobManager and/or the FlashProExpress version used (see the *M-HSM Release Notes* for the supported revisions).
- The user wants to switch to another revision of Microchip-supported firmware.
- Microchip issues a security advisory.

**Notes:**

If U-HSM has any active programming jobs, (through the M-HSM function of U-HSM), they are disabled through the firmware upgrade. Also, the firmware upgrade erases NVRAM and any information about module association with the Security World. The following steps show how to upgrade the firmware of the HSM module and restore the HSM module on the U-HSM server:

1. Read the important notes in section [Upgrade HSM Module Firmware](#) regarding the firmware upgrade procedure and firmware revisions compatibilities. If the firmware upgrade is initiated by a Microchip security advisory, the instructions in the advisory shall supersede the instructions in this guide.
2. Terminate any active job(s):  
If M-HSM function of the U-HSM is used, and U-HSM has any unterminated jobs, the job should be terminated from FlashProExpress tool using complete\_prog\_job command TCL command (see the [FlashPro Express User's Guide](#)).
3. Upgrade the HSM module firmware. HSM module firmware upgrade instructions are provided in section [Upgrade HSM Module Firmware](#).
4. Restore the module association with the Security World.  
Follow the instructions provided in section [Add the HSM Module to the Security World](#).
5. Start the M-HSM server. Follow the instructions provided in section [Start the U-HSM Server](#) and confirm successful server startup.
6. Resubmit new programming jobs, if needed.



## 6. U-HSM Server Replication

An existing U-HSM server can be replicated to one or more new U-HSM servers. As a result, the replicated server gets a copy of the Security World, all HSM keys, imported public keys, the DFK DB and manufacturing keys already existing on the source system.

**Note:** Programming jobs cannot be replicated, but they can be transferred. The overbuild protection does not allow cloning of any job that may exist in the source system. Job tickets reside inside the physical HSM module, and can only be transferred to the new system along with the physical module. The M-HSM function of U-HSM can be used across physically separate U-HSMs, if they run the same Security World.

The following sections provide instructions for U-HSM server replication:

### 6.1 Install the Software

Follow the instructions provided in section [Software Installation](#) and install all required software packages.

### 6.2 Copy Over the Security World

Copy the content of the Security World directory from the source to the destination machine. The location of the security world directory is: %NFAST\_KMDATA%\local.

This step copies over the entire security environment:

- Security World data
- Created U-HSM keys
- Imported public keys
- Imported MFG keys

### 6.3 Copy Over the U-HSM Server

1. Copy HSM server software components from the source HSM to the destination folder of the new server (the default location is C:\Microsemi)
2. On the destination machine, delete the ticket db files (job cannot be replicated):
  - C:\Microsemi\JobDB and
  - C:\Microsemi\JobDB\JobDBArchive

### 6.4 Install a New HSM Module

Follow the instructions provided in section [Set Up a New HSM Module](#).

### 6.5 Start the U-HSM Server

Follow the instructions provided in section [Start the U-HSM Server](#).

### 6.6 Set Up the FTP Server

Follow the instructions provided in section [FTP Server Setup](#).

### 7. Referenced Documents

This user guide references the following documents:

- [\*Secure Production Programming Solution\*](#)
- [\*Programming Job Manager User Guide\*](#)
- [\*FlashPro Express User Guide\*](#)
- [\*Libero SoC Design Flow User Guide\*](#)
- [\*PolarFire FPGA Design Flow User Guide\*](#)
- [\*nShield Edge and Solo User Guide for Windows \(nCipher\)\*](#)
- [\*Manufacturer HSM Installation and Setup Guide\*](#)

**8. Revision History**

Revision	Date	Description
A	11/2020	Document is formatted as per Microchip template. Initial revision.

## 9. Microchip FPGA Technical Support

Microchip FPGA Products Group backs its products with various support services, including Customer Service, Customer Technical Support Center, a website, and worldwide sales offices. This section provides information about contacting Microchip FPGA Products Group and using these support services.

### 9.1 Customer Service

Contact Customer Service for non-technical product support, such as product pricing, product upgrades, update information, order status, and authorization.

- From North America, call **800.262.1060**
- From the rest of the world, call **650.318.4460**
- Fax, from anywhere in the world, **650.318.8044**

### 9.2 Customer Technical Support

Microchip FPGA Products Group staffs its Customer Technical Support Center with highly skilled engineers who can help answer your hardware, software, and design questions about Microchip FPGA Products. The Customer Technical Support Center spends a great deal of time creating application notes, answers to common design cycle questions, documentation of known issues, and various FAQs. So, before you contact us, please visit our online resources. It is very likely we have already answered your questions.

You can communicate your technical questions through our Web portal and receive answers back by email, fax, or phone. Also, if you have design problems, you can upload your design files to receive assistance. We constantly monitor the cases created from the web portal throughout the day. When sending your request to us, please be sure to include your full name, company name, and your contact information for efficient processing of your request.

Technical support can be reached at [soc.microsemi.com/Portal/Default.aspx](https://soc.microsemi.com/Portal/Default.aspx).

For technical support on RH and RT FPGAs that are regulated by International Traffic in Arms Regulations (ITAR), log in at [soc.microsemi.com/Portal/Default.aspx](https://soc.microsemi.com/Portal/Default.aspx), go to the **My Cases** tab, and select **Yes** in the ITAR drop-down list when creating a new case. For a complete list of ITAR-regulated Microchip FPGAs, visit the ITAR web page.

You can track technical cases online by going to [My Cases](#).

### 9.3 Website

You can browse a variety of technical and non-technical information on the Microchip FPGA Products Group [home page](#), at [www.microsemi.com/soc](https://www.microsemi.com/soc).

### 9.4 Outside the U.S.

Customers needing assistance outside the US time zones can either contact technical support at (<https://soc.microsemi.com/Portal/Default.aspx>) or contact a local sales office.

Visit [About Us](#) for [sales office listings](#) and [corporate contacts](#).

---

## The Microchip Website

---

Microchip provides online support via our website at [www.microchip.com/](http://www.microchip.com/). This website is used to make files and information easily available to customers. Some of the content available includes:

- **Product Support** – Data sheets and errata, application notes and sample programs, design resources, user's guides and hardware support documents, latest software releases and archived software
- **General Technical Support** – Frequently Asked Questions (FAQs), technical support requests, online discussion groups, Microchip design partner program member listing
- **Business of Microchip** – Product selector and ordering guides, latest Microchip press releases, listing of seminars and events, listings of Microchip sales offices, distributors and factory representatives

## Product Change Notification Service

---

Microchip's product change notification service helps keep customers current on Microchip products. Subscribers will receive email notification whenever there are changes, updates, revisions or errata related to a specified product family or development tool of interest.

To register, go to [www.microchip.com/pcn](http://www.microchip.com/pcn) and follow the registration instructions.

## Customer Support

---

Users of Microchip products can receive assistance through several channels:

- Distributor or Representative
- Local Sales Office
- Embedded Solutions Engineer (ESE)
- Technical Support

Customers should contact their distributor, representative or ESE for support. Local sales offices are also available to help customers. A listing of sales offices and locations is included in this document.

Technical support is available through the website at: [www.microchip.com/support](http://www.microchip.com/support)

## Microchip Devices Code Protection Feature

---

Note the following details of the code protection feature on Microchip devices:

- Microchip products meet the specifications contained in their particular Microchip Data Sheet.
- Microchip believes that its family of products is secure when used in the intended manner and under normal conditions.
- There are dishonest and possibly illegal methods being used in attempts to breach the code protection features of the Microchip devices. We believe that these methods require using the Microchip products in a manner outside the operating specifications contained in Microchip's Data Sheets. Attempts to breach these code protection features, most likely, cannot be accomplished without violating Microchip's intellectual property rights.
- Microchip is willing to work with any customer who is concerned about the integrity of its code.
- Neither Microchip nor any other semiconductor manufacturer can guarantee the security of its code. Code protection does not mean that we are guaranteeing the product is "unbreakable." Code protection is constantly evolving. We at Microchip are committed to continuously improving the code protection features of our products. Attempts to break Microchip's code protection feature may be a violation of the Digital Millennium Copyright Act. If such acts allow unauthorized access to your software or other copyrighted work, you may have a right to sue for relief under that Act.

---

## Legal Notice

---

Information contained in this publication is provided for the sole purpose of designing with and using Microchip products. Information regarding device applications and the like is provided only for your convenience and may be superseded by updates. It is your responsibility to ensure that your application meets with your specifications.

THIS INFORMATION IS PROVIDED BY MICROCHIP "AS IS". MICROCHIP MAKES NO REPRESENTATIONS OR WARRANTIES OF ANY KIND WHETHER EXPRESS OR IMPLIED, WRITTEN OR ORAL, STATUTORY OR OTHERWISE, RELATED TO THE INFORMATION INCLUDING BUT NOT LIMITED TO ANY IMPLIED WARRANTIES OF NON-INFRINGEMENT, MERCHANTABILITY, AND FITNESS FOR A PARTICULAR PURPOSE OR WARRANTIES RELATED TO ITS CONDITION, QUALITY, OR PERFORMANCE.

IN NO EVENT WILL MICROCHIP BE LIABLE FOR ANY INDIRECT, SPECIAL, PUNITIVE, INCIDENTAL OR CONSEQUENTIAL LOSS, DAMAGE, COST OR EXPENSE OF ANY KIND WHATSOEVER RELATED TO THE INFORMATION OR ITS USE, HOWEVER CAUSED, EVEN IF MICROCHIP HAS BEEN ADVISED OF THE POSSIBILITY OR THE DAMAGES ARE FORESEEABLE. TO THE FULLEST EXTENT ALLOWED BY LAW, MICROCHIP'S TOTAL LIABILITY ON ALL CLAIMS IN ANY WAY RELATED TO THE INFORMATION OR ITS USE WILL NOT EXCEED THE AMOUNT OF FEES, IF ANY, THAT YOU HAVE PAID DIRECTLY TO MICROCHIP FOR THE INFORMATION. Use of Microchip devices in life support and/or safety applications is entirely at the buyer's risk, and the buyer agrees to defend, indemnify and hold harmless Microchip from any and all damages, claims, suits, or expenses resulting from such use. No licenses are conveyed, implicitly or otherwise, under any Microchip intellectual property rights unless otherwise stated.

## Trademarks

---

The Microchip name and logo, the Microchip logo, Adaptec, AnyRate, AVR, AVR logo, AVR Freaks, BesTime, BitCloud, chipKIT, chipKIT logo, CryptoMemory, CryptoRF, dsPIC, FlashFlex, flexPWR, HELDO, IGLOO, JukeBlox, KeeLoq, Klear, LANCheck, LinkMD, maXStylus, maXTouch, MediaLB, megaAVR, Microsemi, Microsemi logo, MOST, MOST logo, MPLAB, OptoLyzer, PackeTime, PIC, picoPower, PICSTART, PIC32 logo, PolarFire, Prochip Designer, QTouch, SAM-BA, SenGenuity, SpyNIC, SST, SST Logo, SuperFlash, Symmetricom, SyncServer, Tachyon, TempTrackr, TimeSource, tinyAVR, UNI/O, Vectron, and XMEGA are registered trademarks of Microchip Technology Incorporated in the U.S.A. and other countries.

APT, ClockWorks, The Embedded Control Solutions Company, EtherSynch, FlashTec, Hyper Speed Control, HyperLight Load, IntelliMOS, Libero, motorBench, mTouch, Powermite 3, Precision Edge, ProASIC, ProASIC Plus, ProASIC Plus logo, Quiet-Wire, SmartFusion, SyncWorld, Temux, TimeCesium, TimeHub, TimePictra, TimeProvider, Vite, WinPath, and ZL are registered trademarks of Microchip Technology Incorporated in the U.S.A.

Adjacent Key Suppression, AKS, Analog-for-the-Digital Age, Any Capacitor, AnyIn, AnyOut, BlueSky, BodyCom, CodeGuard, CryptoAuthentication, CryptoAutomotive, CryptoCompanion, CryptoController, dsPICDEM, dsPICDEM.net, Dynamic Average Matching, DAM, ECAN, EtherGREEN, In-Circuit Serial Programming, ICSP, INICnet, Inter-Chip Connectivity, JitterBlocker, KlearNet, KlearNet logo, memBrain, Mindi, MiWi, MPASM, MPF, MPLAB Certified logo, MPLIB, MPLINK, MultiTRAK, NetDetach, Omniscient Code Generation, PICDEM, PICDEM.net, PICkit, PICtail, PowerSmart, PureSilicon, QMatrix, REAL ICE, Ripple Blocker, SAM-ICE, Serial Quad I/O, SMART-I.S., SQI, SuperSwitcher, SuperSwitcher II, Total Endurance, TSHARC, USBCheck, VariSense, ViewSpan, WiperLock, Wireless DNA, and ZENA are trademarks of Microchip Technology Incorporated in the U.S.A. and other countries.

SQTP is a service mark of Microchip Technology Incorporated in the U.S.A.

The Adaptec logo, Frequency on Demand, Silicon Storage Technology, and Symmcom are registered trademarks of Microchip Technology Inc. in other countries.

GestIC is a registered trademark of Microchip Technology Germany II GmbH & Co. KG, a subsidiary of Microchip Technology Inc., in other countries.

All other trademarks mentioned herein are property of their respective companies.

© 2021, Microchip Technology Incorporated, Printed in the U.S.A., All Rights Reserved.

ISBN: 978-1-5224-7222-3

---

## Quality Management System

---

For information regarding Microchip's Quality Management Systems, please visit [www.microchip.com/quality](http://www.microchip.com/quality).

## Worldwide Sales and Service

AMERICAS	ASIA/PACIFIC	ASIA/PACIFIC	EUROPE
<b>Corporate Office</b> 2355 West Chandler Blvd. Chandler, AZ 85224-6199 Tel: 480-792-7200 Fax: 480-792-7277 Technical Support: <a href="http://www.microchip.com/support">www.microchip.com/support</a> Web Address: <a href="http://www.microchip.com">www.microchip.com</a>	<b>Australia - Sydney</b> Tel: 61-2-9868-6733 <b>China - Beijing</b> Tel: 86-10-8569-7000 <b>China - Chengdu</b> Tel: 86-28-8665-5511 <b>China - Chongqing</b> Tel: 86-23-8980-9588 <b>China - Dongguan</b> Tel: 86-769-8702-9880 <b>China - Guangzhou</b> Tel: 86-20-8755-8029 <b>China - Hangzhou</b> Tel: 86-571-8792-8115 <b>China - Hong Kong SAR</b> Tel: 852-2943-5100 <b>China - Nanjing</b> Tel: 86-25-8473-2460 <b>China - Qingdao</b> Tel: 86-532-8502-7355 <b>China - Shanghai</b> Tel: 86-21-3326-8000 <b>China - Shenyang</b> Tel: 86-24-2334-2829 <b>China - Shenzhen</b> Tel: 86-755-8864-2200 <b>China - Suzhou</b> Tel: 86-186-6233-1526 <b>China - Wuhan</b> Tel: 86-27-5980-5300 <b>China - Xian</b> Tel: 86-29-8833-7252 <b>China - Xiamen</b> Tel: 86-592-2388138 <b>China - Zhuhai</b> Tel: 86-756-3210040	<b>India - Bangalore</b> Tel: 91-80-3090-4444 <b>India - New Delhi</b> Tel: 91-11-4160-8631 <b>India - Pune</b> Tel: 91-20-4121-0141 <b>Japan - Osaka</b> Tel: 81-6-6152-7160 <b>Japan - Tokyo</b> Tel: 81-3-6880-3770 <b>Korea - Daegu</b> Tel: 82-53-744-4301 <b>Korea - Seoul</b> Tel: 82-2-554-7200 <b>Malaysia - Kuala Lumpur</b> Tel: 60-3-7651-7906 <b>Malaysia - Penang</b> Tel: 60-4-227-8870 <b>Philippines - Manila</b> Tel: 63-2-634-9065 <b>Singapore</b> Tel: 65-6334-8870 <b>Taiwan - Hsin Chu</b> Tel: 886-3-577-8366 <b>Taiwan - Kaohsiung</b> Tel: 886-7-213-7830 <b>Taiwan - Taipei</b> Tel: 886-2-2508-8600 <b>Thailand - Bangkok</b> Tel: 66-2-694-1351 <b>Vietnam - Ho Chi Minh</b> Tel: 84-28-5448-2100	<b>Austria - Wels</b> Tel: 43-7242-2244-39 Fax: 43-7242-2244-393 <b>Denmark - Copenhagen</b> Tel: 45-4485-5910 Fax: 45-4485-2829 <b>Finland - Espoo</b> Tel: 358-9-4520-820 <b>France - Paris</b> Tel: 33-1-69-53-63-20 Fax: 33-1-69-30-90-79 <b>Germany - Garching</b> Tel: 49-8931-9700 <b>Germany - Haan</b> Tel: 49-2129-3766400 <b>Germany - Heilbronn</b> Tel: 49-7131-72400 <b>Germany - Karlsruhe</b> Tel: 49-721-625370 <b>Germany - Munich</b> Tel: 49-89-627-144-0 Fax: 49-89-627-144-44 <b>Germany - Rosenheim</b> Tel: 49-8031-354-560 <b>Israel - Ra'anana</b> Tel: 972-9-744-7705 <b>Italy - Milan</b> Tel: 39-0331-742611 Fax: 39-0331-466781 <b>Italy - Padova</b> Tel: 39-049-7625286 <b>Netherlands - Drunen</b> Tel: 31-416-690399 Fax: 31-416-690340 <b>Norway - Trondheim</b> Tel: 47-72884388 <b>Poland - Warsaw</b> Tel: 48-22-3325737 <b>Romania - Bucharest</b> Tel: 40-21-407-87-50 <b>Spain - Madrid</b> Tel: 34-91-708-08-90 Fax: 34-91-708-08-91 <b>Sweden - Gothenberg</b> Tel: 46-31-704-60-40 <b>Sweden - Stockholm</b> Tel: 46-8-5090-4654 <b>UK - Wokingham</b> Tel: 44-118-921-5800 Fax: 44-118-921-5820