

UG0785
User Guide
Netlist Viewer
Libero SoC v12.1 and later



a  **MICROCHIP** company



a  MICROCHIP company

Microsemi Headquarters

One Enterprise, Aliso Viejo,
CA 92656 USA

Within the USA: +1 (800) 713-4113

Outside the USA: +1 (949) 380-6100

Sales: +1 (949) 380-6136

Fax: +1 (949) 215-4996

Email: sales.support@microsemi.com

www.microsemi.com

©2018 Microsemi, a wholly owned subsidiary of Microchip Technology Inc. All rights reserved. Microsemi and the Microsemi logo are registered trademarks of Microsemi Corporation. All other trademarks and service marks are the property of their respective owners.

Microsemi makes no warranty, representation, or guarantee regarding the information contained herein or the suitability of its products and services for any particular purpose, nor does Microsemi assume any liability whatsoever arising out of the application or use of any product or circuit. The products sold hereunder and any other products sold by Microsemi have been subject to limited testing and should not be used in conjunction with mission-critical equipment or applications. Any performance specifications are believed to be reliable but are not verified, and Buyer must conduct and complete all performance and other testing of the products, alone and together with, or installed in, any end-products. Buyer shall not rely on any data and performance specifications or parameters provided by Microsemi. It is the Buyer's responsibility to independently determine suitability of any products and to test and verify the same. The information provided by Microsemi hereunder is provided "as is, where is" and with all faults, and the entire risk associated with such information is entirely with the Buyer. Microsemi does not grant, explicitly or implicitly, to any party any patent rights, licenses, or any other IP rights, whether with regard to such information itself or anything described by such information. Information provided in this document is proprietary to Microsemi, and Microsemi reserves the right to make any changes to the information in this document or to any products and services at any time without notice.

About Microsemi

Microsemi, a wholly owned subsidiary of Microchip Technology Inc. (Nasdaq: MCHP), offers a comprehensive portfolio of semiconductor and system solutions for aerospace & defense, communications, data center and industrial markets. Products include high-performance and radiation-hardened analog mixed-signal integrated circuits, FPGAs, SoCs and ASICs; power management products; timing and synchronization devices and precise time solutions, setting the world's standard for time; voice processing devices; RF solutions; discrete components; enterprise storage and communication solutions, security technologies and scalable anti-tamper products; Ethernet solutions; Power-over-Ethernet ICs and midspans; as well as custom design capabilities and services. Learn more at www.microsemi.com.

Revision History

The following table shows important changes made in this document for each revision.

Revision	Changes
Revision 3.0 (December 2018)	Document template updates and minor text edits.
Revision 2.0 (May 2018)	Minor updates to reflect software changes
Revision 1.0 (October 2017)	Initial release for PolarFire

Contents

Revision History	3
1 Introduction	6
1.1 Supported Families and Platforms	6
1.2 Views	6
2 Invocation	10
3 Netlist Viewer Windows	11
3.1 Opening a View	11
3.1.1 Displaying the Flat Post-Compile Cone View	12
3.2 Closing a View	15
3.3 Netlist Viewer Windows	15
3.4 Design Tree Window	15
3.4.1 Filter	16
3.4.2 Interoperability Between Windows and Views	17
3.5 Canvas Window	17
3.6 Log Window	18
3.7 Status Bar	19

List of Figures

Figure: 1	Netlist Viewer - RTL View	6
Figure: 2	Netlist Viewer - Hierarchical View	7
Figure: 3	Netlist Viewer - Flattened View	7
Figure: 4	Netlist Viewer - Flat Post-Compile Cone View	8
Figure: 5	Netlist Viewer Invocation—Design Flow Window	9
Figure: 6	Netlist Viewer on Start Up	10
Figure: 7	Loading New View Popup Window	11
Figure: 8	Flat Post-Compile Cone View when Loaded—No Design Object Added	11
Figure: 9	Flat Post-Compile Cone View—Design Objects Added	12
Figure: 10	Net Added to View—Solid Line	12
Figure: 11	CFG4 Macro Added	13
Figure: 12	Component Added	13
Figure: 13	Netlist Viewer Windows	14
Figure: 14	Design Tree Window	15
Figure: 15	Turn On/Off Design Tree Window and Log Window	17
Figure: 16	Canvas Window	17
Figure: 17	Log Window	18
Figure: 18	Status Bar	18

1 Introduction

The Microsemi Netlist Viewer is a graphical representation of the design netlist. As FPGA designs grow in size and complexity, it has become essential for the FPGA designer to traverse the netlist to analyze the design.

1.1 Supported Families and Platforms

The Netlist Viewer supports SmartFusion2, IGLOO2, RTG4, and PolarFire devices and runs on Windows and Linux systems.

Note: Depending on the device selected, some UI elements such as icons, options, tabs, and dialog boxes may vary slightly in appearance and/or content. Basic Netlist Viewer functionality remains the same, regardless of the device chosen. In this user guide, a PolarFire device has been used in the example figures.

1.2 Views

The Netlist Viewer is a graphical user interface that displays different views for the different stages of the design process:

- RTL netlist view - Technology-independent netlist view of the design before mapping of the design elements to the Microsemi-specific technology. Using the RTL view is a fast and easy way to determine whether the correct logic has been implemented by the software. Cross-probing from this view to the HDL code facilitates troubleshooting when the design is not working as desired.
- Hierarchical Post-Synthesis view - Hierarchical view of the netlist after synthesis and after technology mapping to the Microsemi FPGA technology.
- Flat Post-Compile Netlist view - A flattened netlist after synthesis, technology mapping and further optimization based on the DRC rules of the device family and/or die.
- Flat Post-Compile Cone view - This view loads the same netlist as the Flat Post-Compile view, but does not initially draw anything on the canvas. Important parts of the design can be added to the canvas from the tree or from the existing items in the view. This view opens much more quickly than the Flat Post-Compile view. It allows you to load only the parts of the design you are interested in. This view is well-suited for use with large designs. This view is not available for all families.

Figure 1 • Netlist Viewer - RTL View

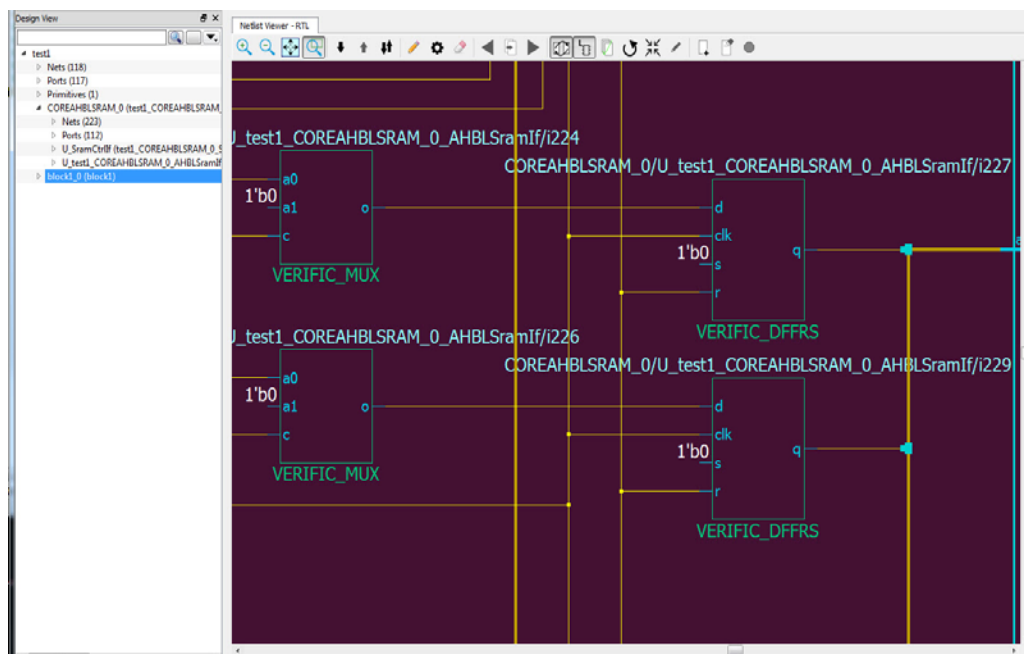
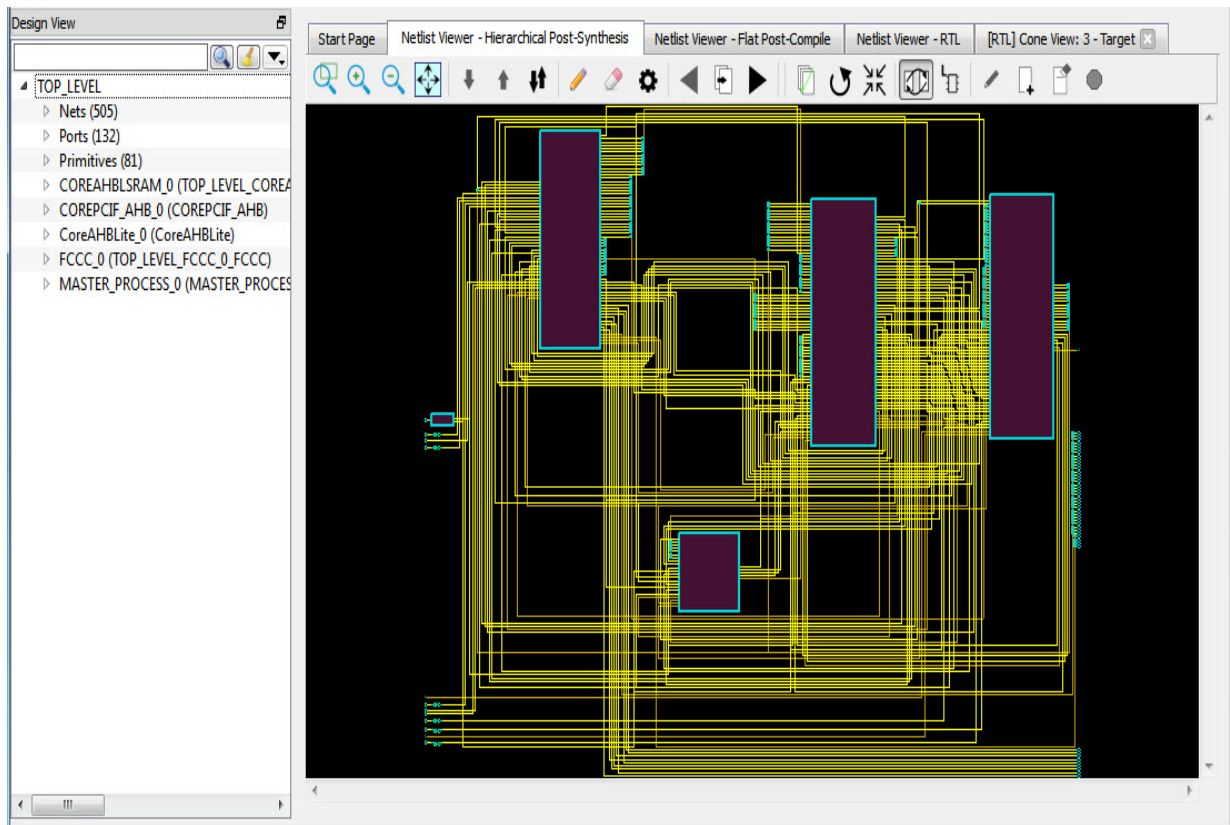
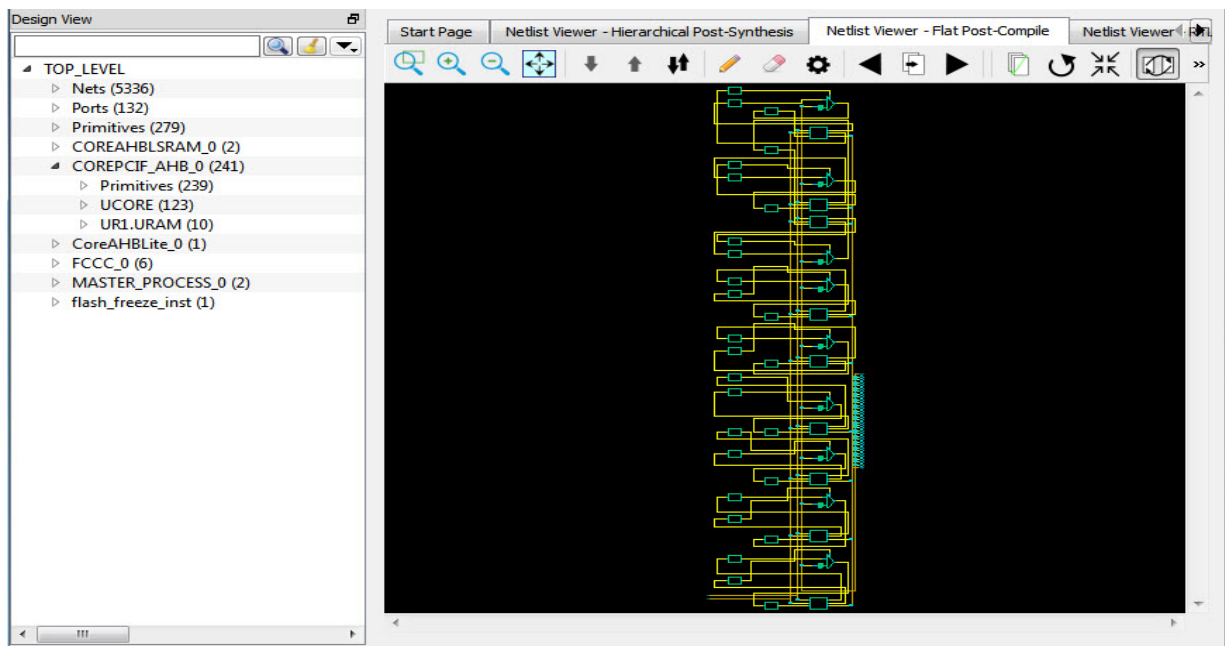
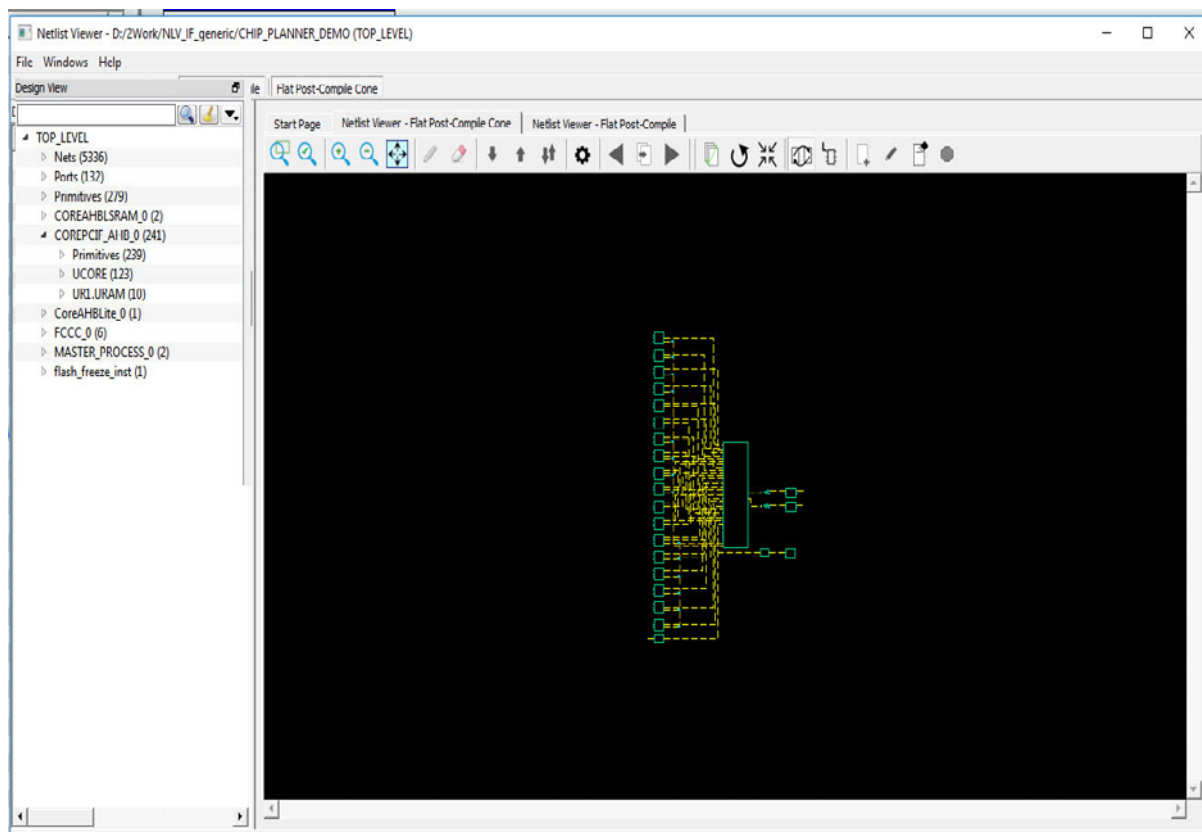


Figure 2 • Netlist Viewer - Hierarchical Post Synthesis View

Figure 3 • Netlist Viewer - Flat Post-Compile View


Note: A progress bar indicates that the flattened netlist is being loaded. For a large netlist, the loading may incur some runtime penalty. A **Cancel** button is available to cancel the loading.

Figure 4 • Netlist Viewer - Flat Post-Compile Cone View

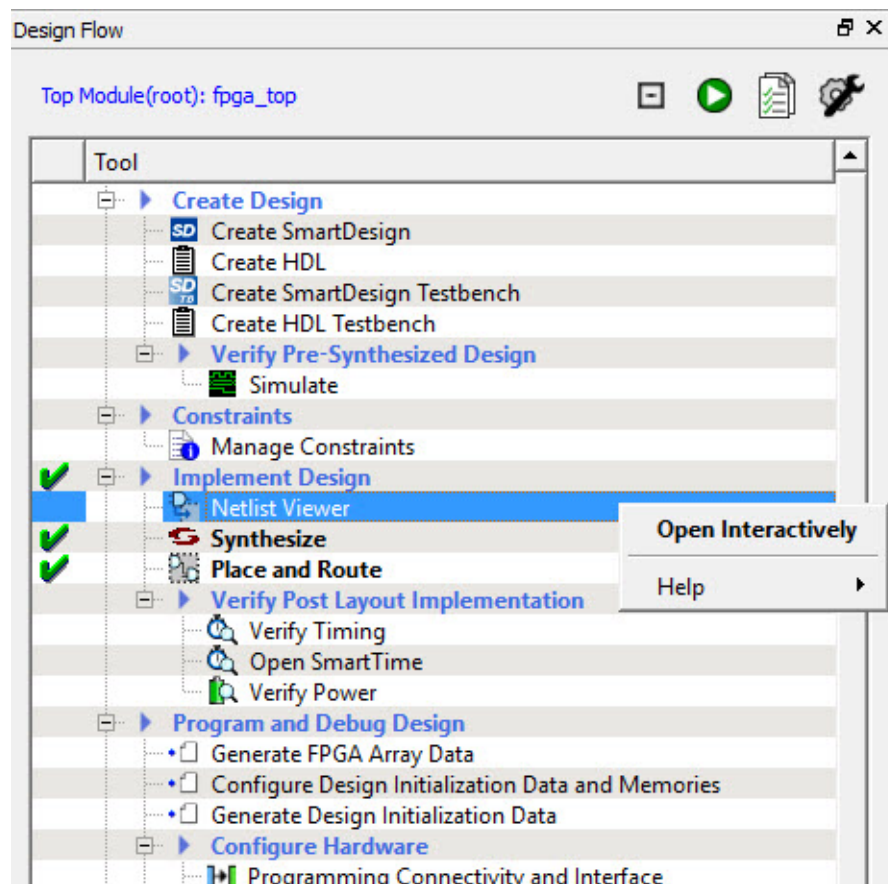
2 Invocation

The standalone Netlist Viewer is available for invocation in the Design Flow window.

To open the standalone Netlist Viewer in the Flow Window, do one of the following:

- Double-click Netlist Viewer inside the Design Flow window.
- Right-click Netlist Viewer and select Open Interactively (**Netlist Viewer > Open Interactively**)

Figure 5 • Netlist Viewer Invocation—Design Flow Window



When Netlist Viewer opens, it makes available for loading and viewing the following views of the netlist:

- RTL - Available after design capture/design generation
- Hierarchical Post-Synthesis - Available after Synthesis
- Flat Post-Compile - Available after Synthesis or Place and Route. If after Place and Route, the Netlist Viewer loads the Flat Post-Compile view to reflect the netlist generated after Place and Route.
- Flat Post-Compile Cone - Available after Synthesis or Place and Route. If after Place and Route, the Netlist Viewer loads the Flat Post-Compile view to reflect the netlist generated after Place and Route. This view does not display any netlist on the canvas until an instance from the design tree is selected and loaded. This view allows you to load in a special area of the design you are interested in. It also cuts down the runtime.

3 Netlist Viewer Windows

When the standalone Netlist Viewer opens, no netlist views are loaded. The Start Page shows the netlist views that can be opened for viewing.

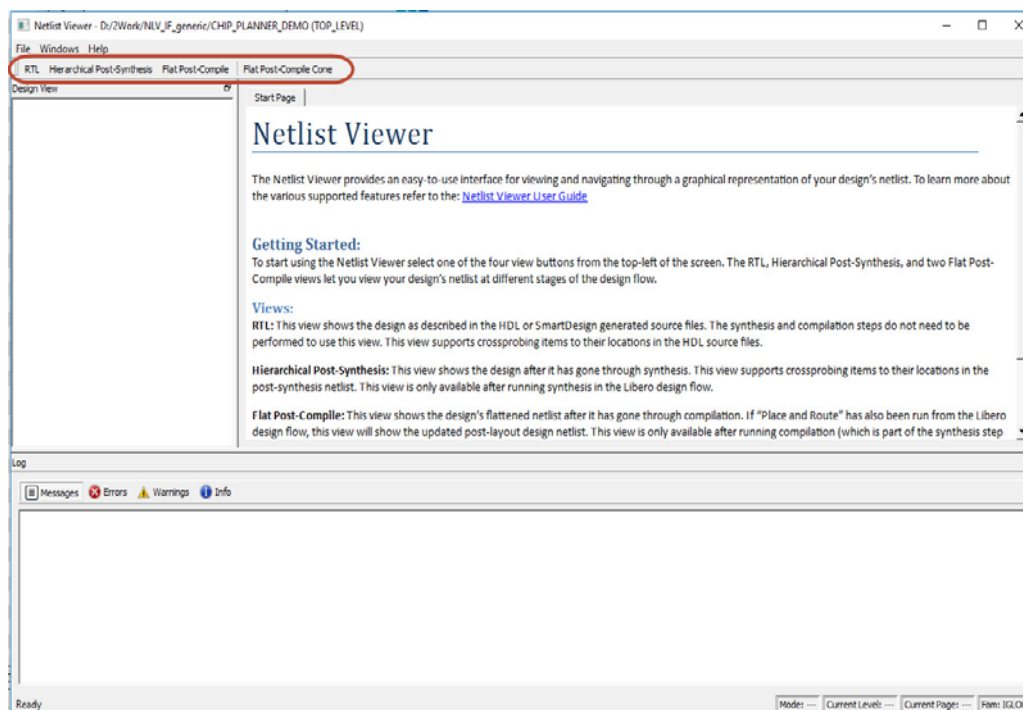
The Netlist Viewer User Guide is available from the Design Flow window (**Netlist Viewer > Help > Netlist Viewer User Guide**) and also from the Help menu (**Help > Reference Manuals**).

3.1 Opening a View

Click any of the following views (across the top-left corner) to load the netlist into the Netlist Viewer for viewing:

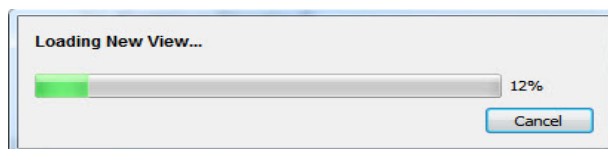
- RTL view - Pre-synthesis RTL netlist is drawn in the view.
- Hierarchical Post-Synthesis view - Post-Synthesis Netlist is drawn in the view
Note: Not available if synthesis is disabled in the design flow (**Project > Project Settings > Design Flow > Enable Synthesis** is unchecked)
- Flat Post-Compile view - Flattened Post-Compile Netlist is drawn in the view.
- Flat Post-Compile Cone view - No netlist is drawn until design objects are added to the view.

Figure 6 • Netlist Viewer on Start Up



Note: When netlist views are opened for the first time in the Netlist Viewer, they are loaded into system memory and remain in system memory until the Netlist Viewer exits. For very large designs, loading the netlist for the first time may incur some runtime penalty. A pop-up window reports the status of the loading process.

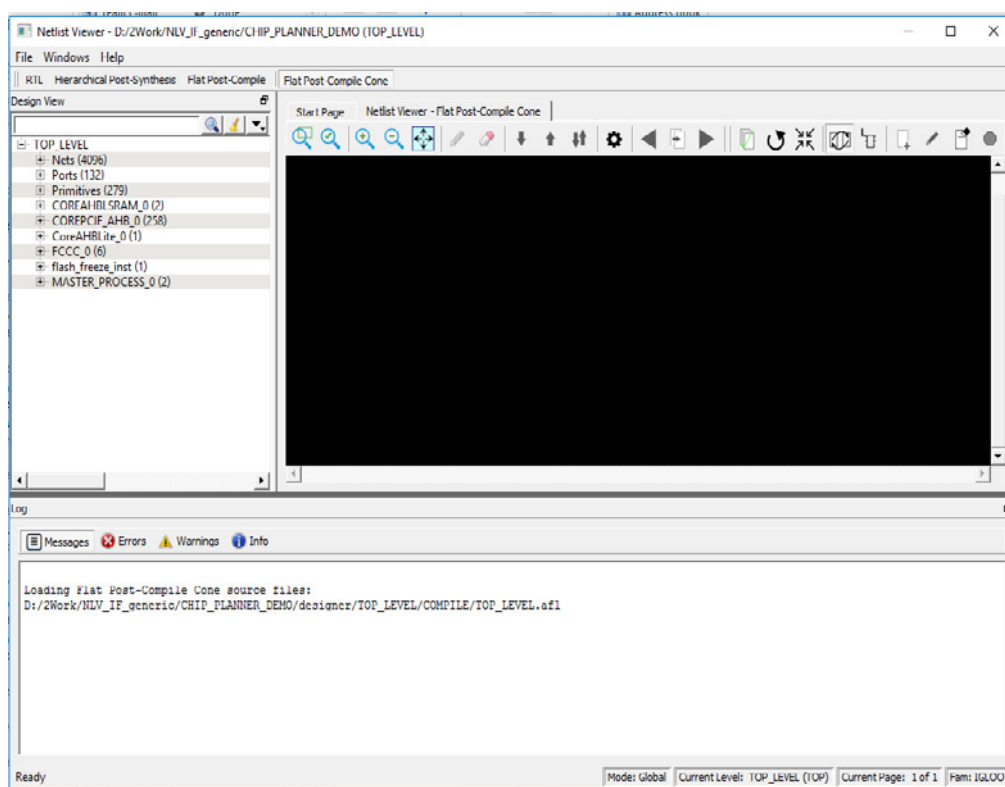
Note: The Flat Post-Compile Cone view takes very little runtime because no netlist is drawn when this view is first loaded. This view does not display a netlist until instances from the design tree are selected and loaded.

Figure 7 • Loading New View Popup Window

When the netlist views are opened for the second and subsequent times, the netlist views are available almost immediately in the Netlist Viewer because they are already loaded into the system's memory.

3.1.1 Displaying the Flat Post-Compile Cone View

When the Flat Post-Compile Cone view has finished loading, unlike the other three views, nothing is drawn in the canvas.

Figure 8 • Flat Post-Compile Cone View when Loaded—No Design Object Added

Opening a design in the Flat Post-Compile view may incur some runtime penalty. This (cone) view loads the same AFL netlist source file as the Flat Post-Compile view. However, this (cone) view, unlike the Flat Post-Compile view, draws nothing until you select the part of the design you want to display. This reduces the runtime penalty very often associated with drawing a large netlist for display.

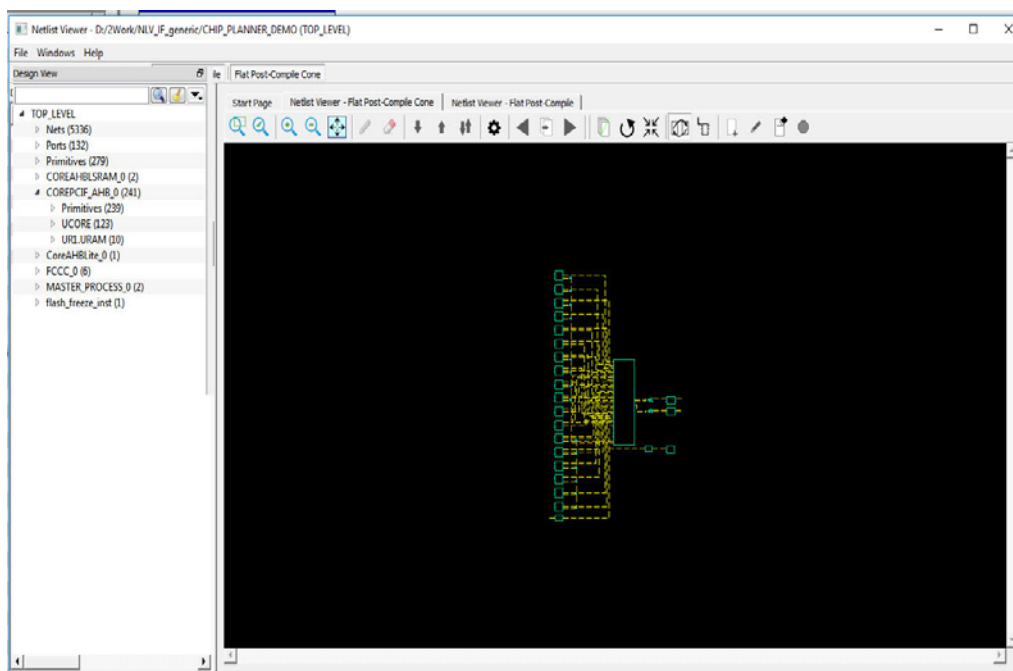
This view is useful when a small or critical part of a very large design needs to be examined.

Design objects that can be selected for display in this view include:

- Nets
- Ports
- Macros
- Components

To display design objects in the Flat Post-Compiled Cone view, right-click the design object (net/macro/port/component) in the Design Tree and select **Load Selection**. The design object is added to the view.

Figure 9 • Flat Post-Compile Cone View—Design Objects Added

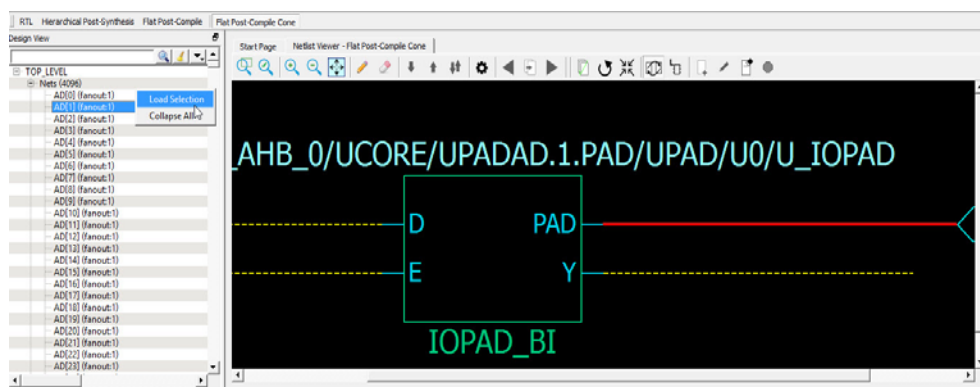


3.1.1.1 Adding a Net

Right-click a net in the Design Tree and select **Load Selection** to add a net to the view. Adding a net to the view adds a solid line net to the view (unless you cancel early), including all the instances and ports the net is connected to. The added net is selected in the view.

Nets that span multiple pages can be followed through the right-click menu item **Follow Net to Page#** to go to different pages that the net is on.

Figure 10 • Net Added to View—Solid Line

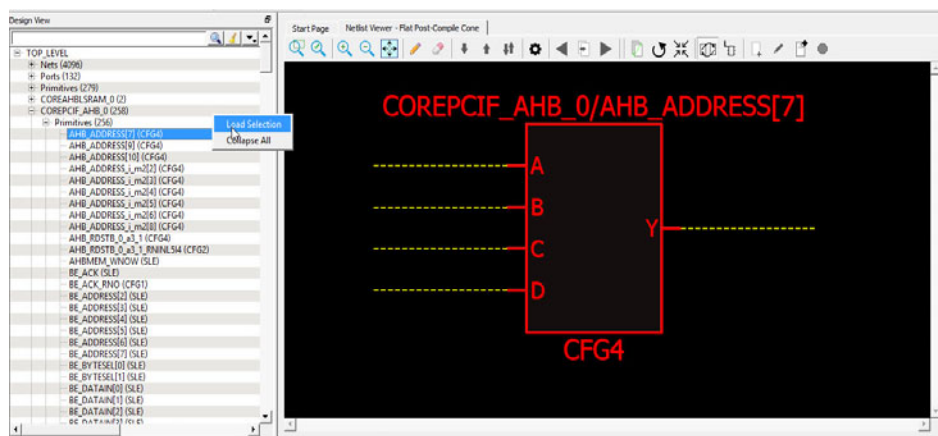


3.1.1.2 Adding Macro

A macro is a basic low-level design object from the Macro Library in the Catalog. Right-click a macro in the Design Tree and select **Load Selection** to add a macro. Adding a macro adds the instance with its connected nets to the view. The connected nets are always dashed yellow lines, even if they are not

connected to any logic outside the view. Double-clicking the net adds connections (if any) and turns the net from a dashed line to a solid line. A solid line for a net indicates that it is a user-added net.

Figure 11 • CFG4 Macro Added



3.1.1.3 Adding a Port

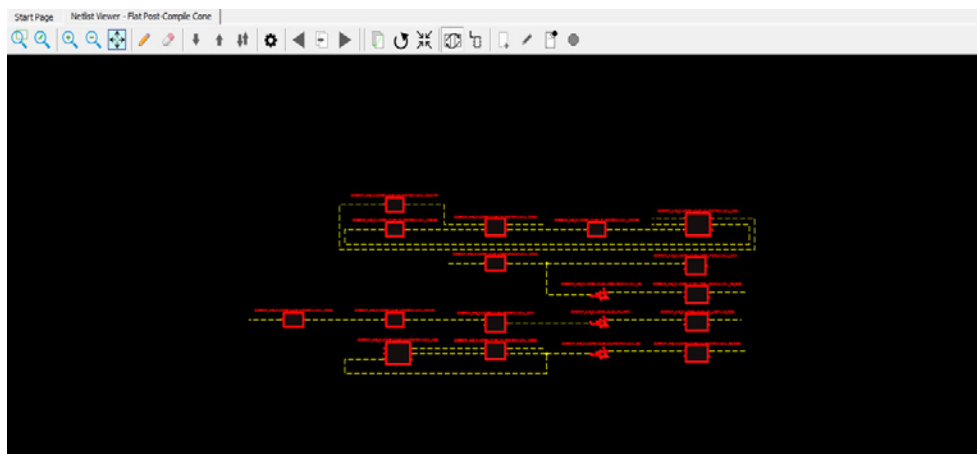
Right-click a port in the Design Tree and select **Load Selection** to add a port to the view. Adding a port to the view is the same as adding the net connected to the port.

3.1.1.4 Adding a Component

Right-click a component in the Design Tree and select **Load Selection** to add a component to the view. Adding a component to the view is the same as selecting all lower level macros and adding them to the view. The added macros are selected.

Note: For very large components with many low level macros, to save runtime the macros are added but cannot be selected.

Figure 12 • Component Added



3.1.1.5 Load/Driver Display

Design objects can also be added to the view through the right-click menu to add load/driver. This action adds any instances at the different logical levels.

3.2 Closing a View

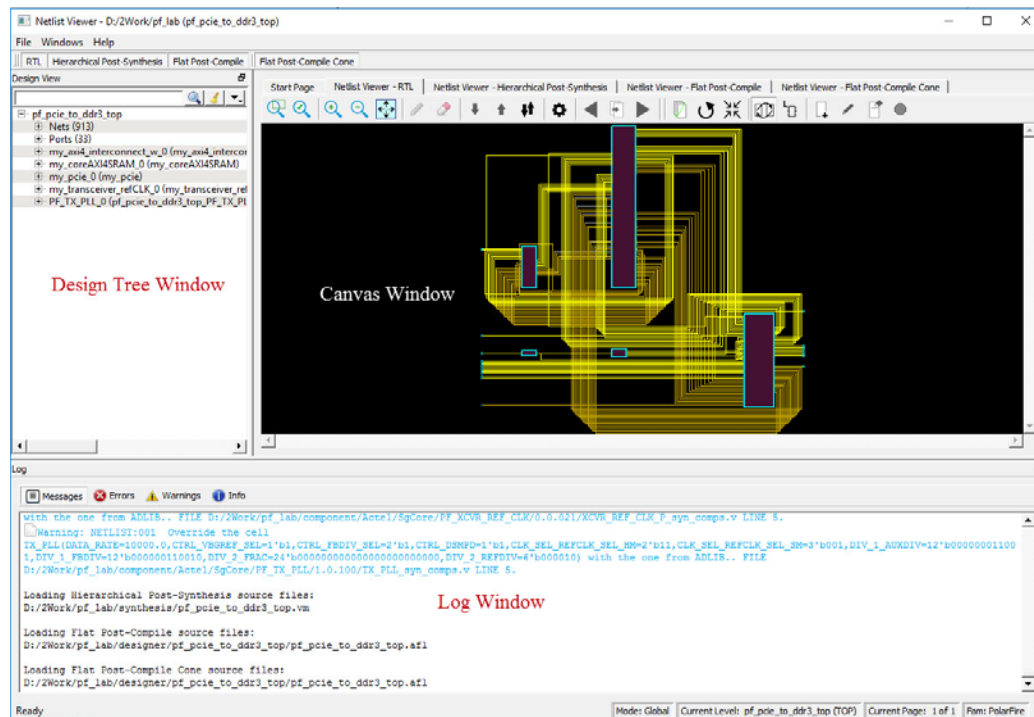
Click an opened view (across the top of the Netlist Viewer) to close that opened view. A closed view stays in system memory as long as the Netlist Viewer remains open. Opening the same netlist view at a later time does not incur runtime penalty, as no loading is required.

3.3 Netlist Viewer Windows

When the Netlist Viewer opens, it displays three windows by default:

- Design Tree window - displays the design hierarchy from the top level
- Canvas Window - displays the netlist views
- Log Window - displays messages/warnings/Info etc.

Figure 13 • Netlist Viewer Windows



3.4 Design Tree Window

This window displays the design hierarchy from the top level. By default, when the Netlist Viewer opens, it displays the Design Tree window.

Note: The Design Tree window is displayed by default when the Netlist Viewer opens. Hiding the Design Tree view will leave more display area for the Canvas view. To get a bigger display area for the canvas view, hide the Design Tree window (**Netlist Viewer > Windows > Uncheck Show Tree**)

The Design Tree window displays:

- Nets (<integer>) - the number in brackets is the total number of nets at the top level.
- Ports (<integer>) - the number in brackets is the total number of ports at top level
- Design components under the top level - each component can be collapsed or expanded to expose
 - nets - total number of nets at the component level
 - ports - total number of ports at the component level
 - subcomponents inside the component
- Fanout Values (Nets) - When two numbers are displayed in the bracket, the first number is the fanout of the net at the local level (of hierarchy) and the second number is the fanout of the net at the

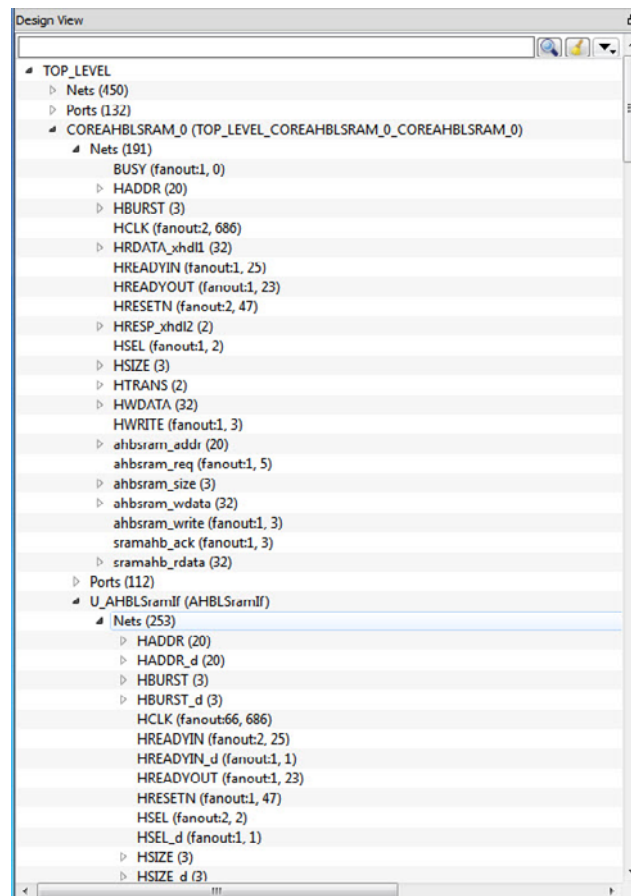
global level. As an example, net_xyz (fanout:1,3) means the net goes down the levels of hierarchy to three different pins (global fanout 3) and is not connected to any other pins at the current level (local fanout 1).

- Primitives - Primitives refer to macros and low-level design objects and can appear in the top level or component level.

The design tree is different with different netlist views. For the Flat Post-Compile view, the design tree displays a much larger number of nets than the RTL view or Hierarchical Post-Synthesis view, because the netlist is flattened in the Post-Compile view and all nets are counted. The nets in the Flat Post-Compile view, unlike the RTL view or the Hierarchical Post-Synthesis view, shows only one value for fanout (global fanout) because it is a flattened view (no hierarchy).

For nets that are part of a NetBundle, the NetBundle name is followed by a number in parentheses that indicates the total number of nets in the NetBundle.

Figure 14 • Design Tree Window

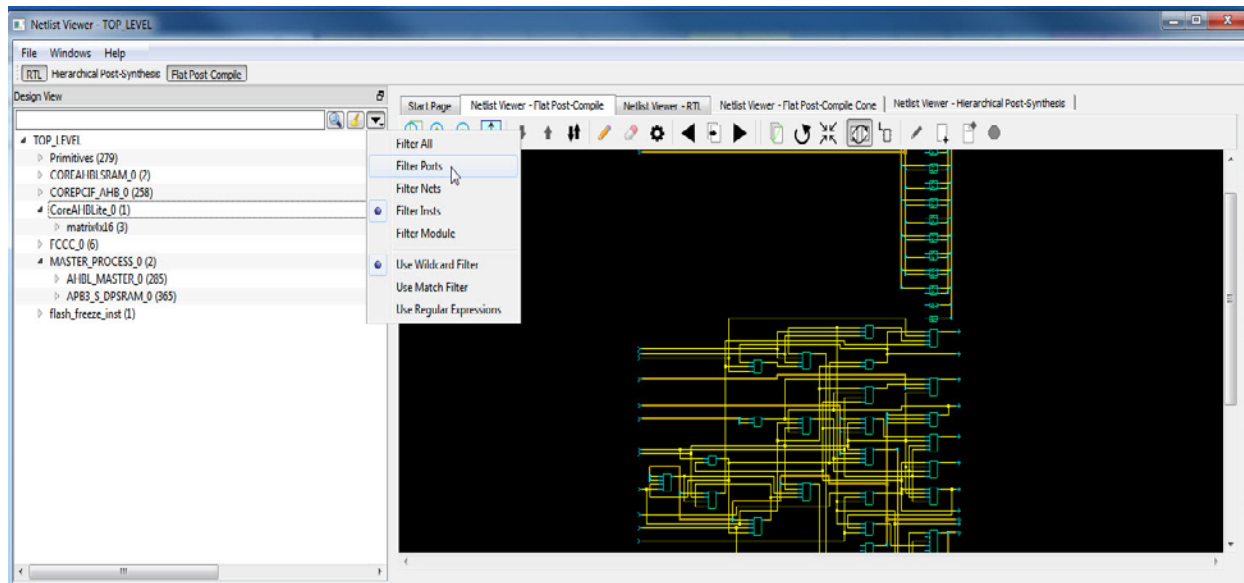


3.4.1 Filter

The display of design objects in this view can be filtered based on:

- Ports - displays all ports only, including component level ports
- Nets - displays all nets only, including component level nets
- Instances - display all instances only, including component level instances
- Modules - display all modules only
- Filter All - display all design objects only
- Use Wildcard Filter
- Use Match Filter
- Use Regular Expressions

Click the **Filter** button at the top-right corner of the Design View to filter design objects.



3.4.2 Interoperability Between Windows and Views

When a design object such as a net, an instance, or a port is selected in the Design Tree window, the object is selected in the different netlist views. The reverse is also true. An object selected in one netlist view window is also selected in the Design Tree window and other netlist views.

Interoperability works only when the Toggle Crossprobing icon is enabled.

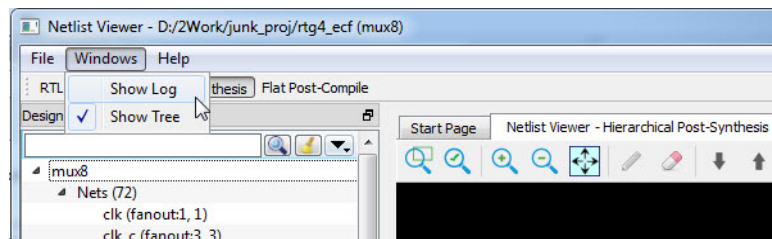
3.5 Canvas Window

The Canvas Window displays the:

- RTL view
- Hierarchical Post-Synthesis view
- Flat Post-Compile view
- Flat Post-Compile Cone view
- Cones view
- Opened HDL files (not available in the Flat Post-Compile view)
- Start Page - when no netlist views are opened

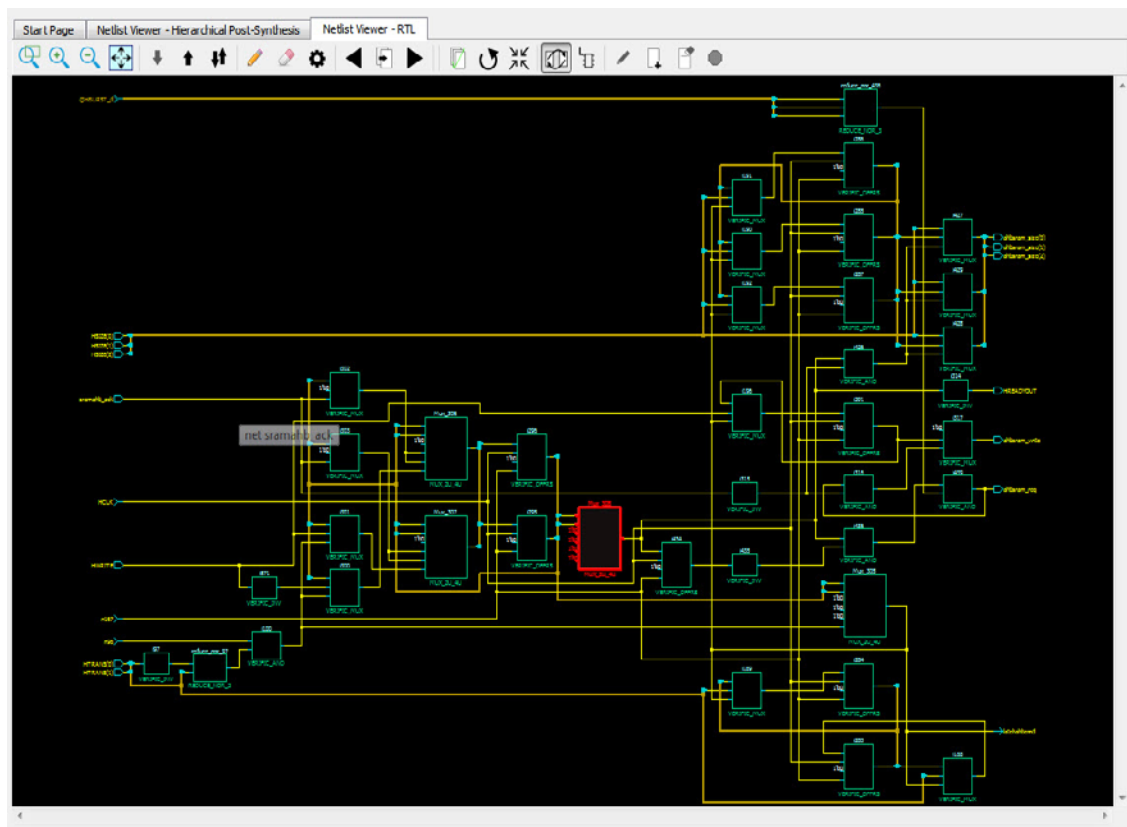
When a view is opened, a view tab is added across the top of the Canvas window for ease of switching between views.

Note: To get a larger display area for the Canvas view, hide the Design Tree Window (**Netlist Viewer > Windows > Uncheck Show Tree**) and hide the Log window (**Netlist Viewer > Windows > Uncheck Show Log**). Hiding the Log window and the Design Tree window leaves more display area for the Canvas window. Alternatively, press **CNTL+w** to maximize the work area.

Figure 15 • Turn On/Off Design Tree Window and Log Window


Icons in the Canvas window allow the user to:

- Traverse vertically up (Pop) or down (Push) the design hierarchy
- Navigate horizontally across different pages of the design view
- Zoom in/out of the design view
- Trace critical nets to the driver/load
- Create logical cones for debugging
- Control the color display the design objects

Figure 16 • Canvas Window


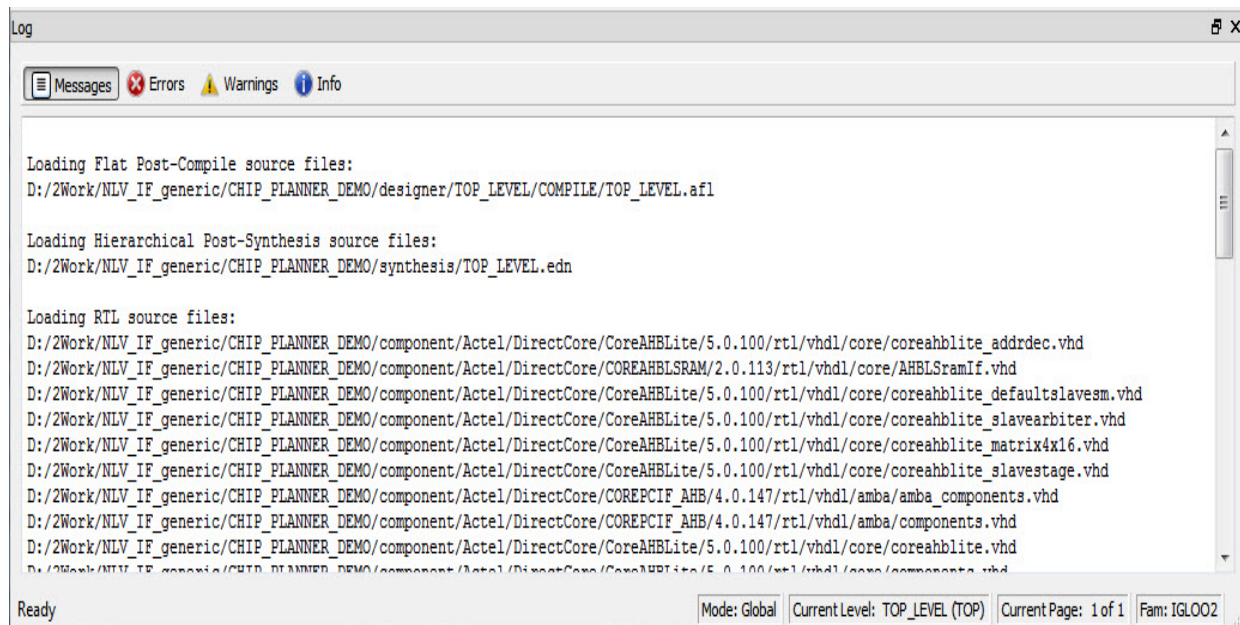
3.6 Log Window

The Log window displays the following:

- Informational messages such as the location and name of the files used to display the view
- Syntax errors, if any, in the HDL file if the HDL file is opened with the "Open File Location" option (Right-click design object > Open File Location).

Note: The Log window displays by default when the Netlist Viewer opens. Hiding the Log window will leave more display area for the Canvas view. To get a larger display area for the Canvas view, hide the Log window (**Netlist Viewer > Windows > Uncheck Show Log**)

Figure 17 • Log Window



3.7 Status Bar

The status bar at the bottom right corner of the Netlist Viewer displays the following:

- Mode - Either Global or Local mode is displayed. Global mode means the Netlist Viewer can cross hierarchical boundaries when following nets to drivers or loads. Local means the Netlist Viewer stays in the current level of design hierarchy.
- Current Level - displays the current level of design hierarchy, either TOP_LEVEL instance name or instance name of the component.
- Current Page - displays the current page of the Netlist Viewer (Page x of <total>) when traversing across different pages of the Netlist Viewer.
- Fam - displays the technology family.

Figure 18 • Status Bar

