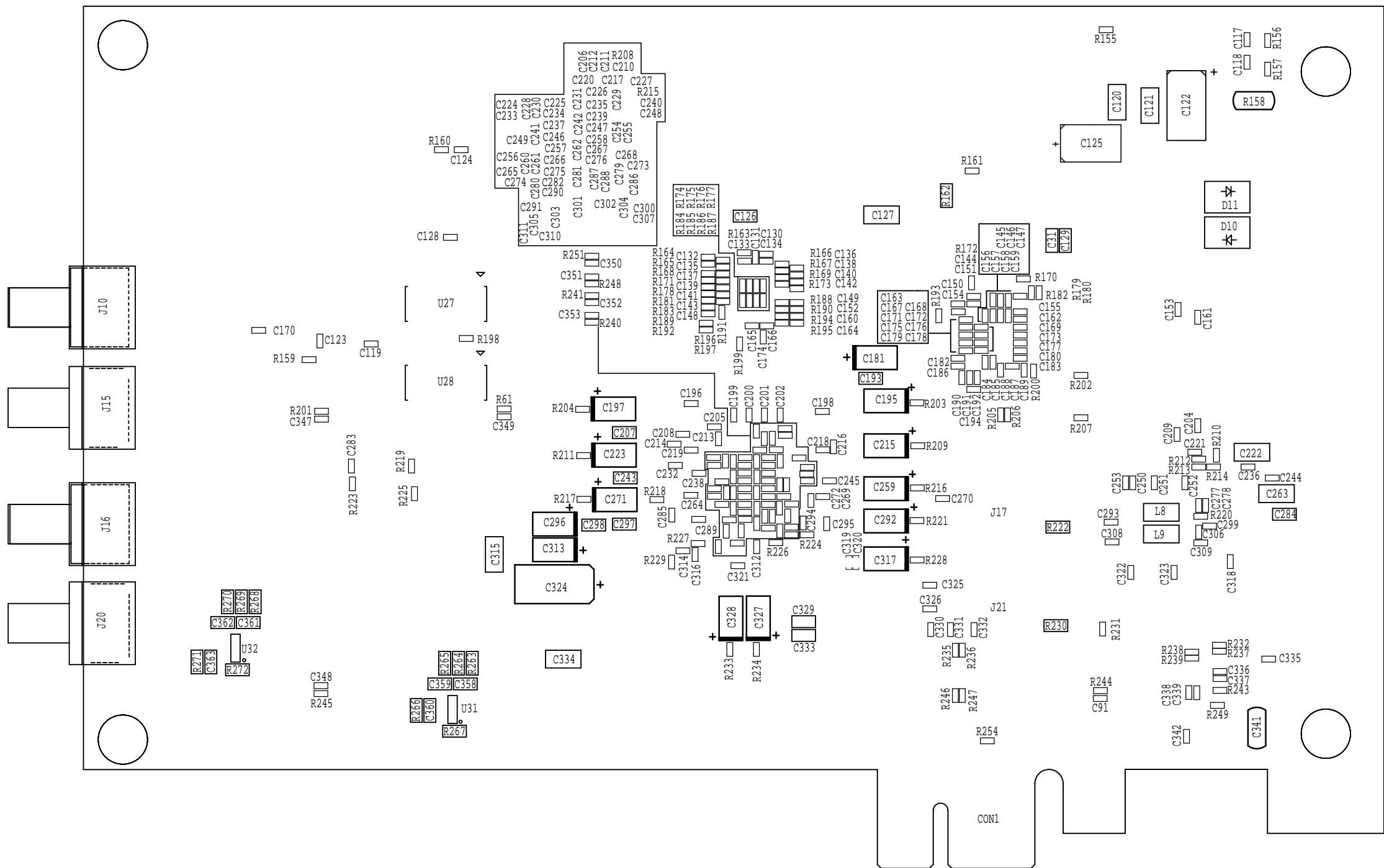


(X) → INSTALL M3 STAND OFF'S AND M3 SCREWS
PROTRUDING LEADS SHOULD BE TRIMMED AFTER ASSEMBLY

PACTRON	
DATE: JAN 2014	
PROJECT NAME: M2GL_M2S-EVAL-KIT	REV: D
FILM LAYER: ASSEMBLY_TOP_DEBUG	



FILM LAYER: ASSEMBLY_BOTTOM_DEBUG	PROJECT NAME: MSGT_M2S-EVAL-KIT	REV: D	DATE: JAN 2014	PACTRON
-----------------------------------	---------------------------------	--------	----------------	---------